

MEDDELELSER OM GRØNLAND

UDGIVNE AF

KOMMISSIONEN FOR VIDENSKABELIGE UNDERSØGELSER I GRØNLAND

Bd. 131 · Nr. 5

FURTHER RECORDS
OF RARE OR NEW GREENLAND BIRDS

(MISCELLANEOUS NOTES ON GREENLAND
ORNITHOLOGY IV)

BY

RICH. HØRRING AND FINN SALOMONSEN

WITH 7 FIGURES IN THE TEXT

KØBENHAVN

C. A. REITZELS FORLAG

BIANCO LUNOS BOGTRYKKERI A/S

1941

INTRODUCTION

These notes dealing with some records of birds rare in or quite new to Greenland, form a continuation of the list of records published some years ago (F. SALOMONSEN 1935) and bring the records up to the year 1941. All occurrences of rare birds described below are based on skins put at the authors' disposal from various sources. The list comprises some specimens sent to the Zoological Museum of Copenhagen to H. WINGE and R. HØRRING and not noted previously, others sent to F. SALOMONSEN for examination in recent years. Of the contributors to the material forwarded to F. SALOMONSEN must primarily be mentioned: DR. LAURENT CHRISTENSEN, Director K. OLDENDOW, and Mr. RUDOLF SAND, but valuable records are also added by Mrs. P. DJURHUUS (Thorshavn), Mr. H. FENCKER (Umanak), Lektor JOHS. FERDINAND (Næstved), Dr. G. C. A. JUNGE (Leiden) and Mag. M. P. PORSILD (Godhavn). We are much indebted to these gentlemen. Further notes have been added on some specimens kept in the school ("Efterskolen") in Julianehaab and recently examined by F. SALOMONSEN during a stay in Greenland.

The work has been divided among the authors in the following way: R. HØRRING has described all records based on skins sent to the Zoological Museum of Copenhagen; F. SALOMONSEN has described all skins sent to him for examination by the contributors mentioned above; many of these skins, however, are now kept in the Zoological Museum of Copenhagen, as stated in each case. He has also worked out the material of the *Larus argentatus* group kept in the Zoological Museum. The description of the general occurrence of each species in Greenland and the checking of older records from literature and from skins in collections has been done by that author who has described the new record of the species in question; when new records of a species have been sent to both HØRRING and SALOMONSEN the paragraph on the general occurrence has been worked out by both authors in company.

Our acknowledgements are due to Mr. G. KROG, Mr. U. MØHLHANSEN and Mag. CHR. VIBE for obtaining the photographs in this paper.

Anas crecca crecca L.

Anas crecca LINNAEUS, Syst. Nat., Ed. X, Vol. I, p. 126 (1758—Europe; type-locality restricted to Sweden).

The Teal.

The Teal has been met with several times as an accidental visitor on both the western and eastern coast of Greenland. Also the American race, the Green-winged Teal (*A. c. carolinensis* Gm.) has occurred some times in West Greenland. As the young birds and females of the two races in some cases can be distinguished only with difficulty some of the records mentioned below may belong to the American race.

The records of the European Teal from Greenland are as follows: "West Greenland" 1823 (two skins), Southeast-coast at 60°28' May 1829 (sight-record)¹), Julianehaab ♂ 1838, *ibid.* ♂ about 1843, Sardlok in Julianehaab District 22nd April 1847, Nanortalik ♀ about 1856, Arsuk ♀ 10th Oct. 1893 (H. WINGE 1898, p. 77), Nanortalik ♀ ad. May 1899, Fiske-næs ♂ June 1903, *ibid.* ♂ 1904 (probably June), Frederikshaab ♂ 19th May 1907, Grædefjord ♂ 26th May 1914, Julianehaab ♀ juv. 11th Nov 1915 (E. L. SCHIÖLER 1925, p. 280²)), Angmagssalik ♂ juv. end Sept. 1897 (O. HELMS 1899, p. 232), *ibid.* ♂ juv. 25th Sept. 1899 (flock of six, of which one secured) (O. HELMS 1904, p. 89), Ikerasak in Umanak District 20th Sept. 1913 (flock of four, of which a ♀ shot), Igdlorssuit in Umanak District ♀ June 1916 (A. BERTELSEN 1921, p. 146), Angmagssalik ♂ 13th May 1909, *ibid.* juv. 20th Oct. 1914 (O. HELMS 1926, p. 224), Frederikshaab ♂ ad. and ♀ ad. June 1925 (E. L. SCHIÖLER 1926, p. 336), Cape Hope at Scoresby Sound ♂ ad. and ♀ ad. 31st May 1928, and *ibid.* ♂ ad. 3rd June 1928 (besides some sight-records; breeding suggested) (A. PEDERSEN 1930, p. 426), Sârdloq in Godthaabsfjord ♂ 1st Oct. 1925, Fiske-næs ♀ 10th Oct. 1925, Angmagssalik ♂ ad. 28th May 1928, Augpilagtoq in Julianehaab District ♂ ad. 12th April 1929 (besides some sight-records) (K. OLDENDOW 1933, p. 12), Cape Dalton at Scoresby Sound

¹) This record has often erroneously been referred to *A. c. carolinensis* in the literature. E. L. SCHIÖLER (1925, p. 283) has already drawn attention to this mistake.

²) Cf. also E. L. SCHIÖLER 1911, p. 65 about these and other skins of Teal from Greenland.

10th July 1932 (sight-records) (M. DEGERBØL and U. MØHL-HANSEN 1935, p. 6).

The following records are now added:

1. An adult ♂ in fine nuptial plumage was shot at Augpilagtoq in Julianehaab District 3rd May 1937 and by Dr. LAURENT CHRISTENSEN sent to FINN SALOMONSEN who forwarded it to the Zoological Museum. The wing measures 178 mm, culmen 36 mm.

2. A young female was shot at Frederikshaab 7th Oct. 1891 and sent to K. ANDERSEN. The wing measures 181 mm, exposed culmen 37 mm, speculum mainly white. The skin is now in the Zoological Museum of Copenhagen (C. N. 32)¹).

3. An adult male in nuptial plumage was shot at Umanaq 18th June 1922. The bird which was alone and very wary, stayed for about eight days at a small lake near the houses of the settlement. It was sent to the Zoological Museum by Dr. A. BERTELSEN (C. N. 118). The wing measures 180 mm, exposed culmen 35 mm.

4. A young bird without any designation as to sex, was sent to the Zoological Museum by the Northeast Greenland Company in 1926 (C. N. 126). The wing measures 176 mm, exposed culmen 35 mm. The light foremost portion of the speculum is mainly white.

5. A young male was shot at Godthaab 6th Oct. 1927 and sent to the Zoological Museum (C. N. 128) by JOHN MØLLER. The wing measures 178 mm, exposed culmen 41 mm. Determined as to subspecies by the extensively white colour of the speculum.

6. An adult male in nuptial plumage was shot at Godthaab in 1931 and by Mr. RAFN, telegraph master, presented to the Zoological Museum (C. N. 147). The wing measures 180 mm, exposed culmen 36 mm²).

7. An adult male in fine nuptial plumage was shot at Angmagssalik 6th May 1936 by Mr. GITZ JOHANSEN, painter, and he presented the skin to the Zoological Museum (C. N. 141). The wing measures 177 mm, exposed culmen 36 mm.

8. An adult male in fine nuptial plumage was shot at Angmagssalik 15th May 1936, also by Mr. GITZ JOHANSEN, who presented the skin to the Zoological Museum (C. N. 142). The wing measures 182 mm, exposed culmen 36 mm.

SCHIØLER (1925, p. 280) mentions 7 young European Teals, 5 from Godthaab and 2 from Julianehaab, however without stating the date of capture, measurements, etc. Since a number of these skins together

¹) C. N. = Catalogue Number in the Zoological Museum of Copenhagen.

²) This specimen is mentioned in a paper by AA. RAFN (1933, p. 19), who, however, states that the bird was shot in the winter 1929—30.

with a few others are now incorporated in the collection of the Zoological Museum, the dates of the available skins are entered below.

- a) A young male. Kangeq, Godthaab, 25.10.1919. JOHN MØLLER.
Wing 185 mm, Culmen 35 mm.
- b) A young female? Narssaq, Godthaab, 15.9.1920. JOHN MØLLER.
Wing 175 mm, Culmen 33 mm.
- c) A young male, Julianehaab, 15.10.1899, DR. G. MELDORF.
Wing 177 mm, Culmen 34 mm.
- d) A young male, Kangeq, Godthaab, 14.11.1912. JOHN MØLLER.
Wing 181 mm, Culmen 37 mm.
- e) A young female, Julianehaab, 16.10.1899. DR. G. MELDORF.
Wing 175 mm, Culmen 34 mm.
- f) A young female, Nanortalik, Julianehaab, Sept. 1906, MATHIESEN.
Wing 170 mm, Culmen 35 mm.
- g) A young female? Grædefjord, 22.10.1893, DR. TH. N. KRABBE.
Wing 180 mm, Culmen 38 mm.

Anas crecca carolinensis Gml.

Anas carolinensis GMELIN, Syst. Nat., Vol. I, part 2, p. 533 (1789—South Carolina).

The Green-winged Teal.

The Green-winged Teal has been met with several times as an accidental visitor to the western coast of Greenland. The subspecific determination of young birds and females have often caused some difficulties, but the present collection has been re-examined with this especially in view; young birds and females were referred to the American subspecies if the light band of the speculum is brown or brownish in its entire length. The Green-winged Teal is distributed as a breeding bird from northern Alaska, northern Mackenzie, Great Slave Lake, northern Manitoba, James-Bay and southern Ungava Peninsula south to central California, northern Nevada, Utah, New Mexico and Nebraska, southern Minnesota, northern Michigan, southern Ontario, western New York and Quebec. It occurs casually in Bermuda, Great Britain, the Hawaiian Islands, and Japan.

The Green-Winged Teal has been recorded from the following localities in Greenland: Ikerasârssuk southeast of Fiskenes juv. 22nd Sept. 1840, Julianehaab ♂ ad. about 1849, Godthaab ♂ ad. about 1852, Umanak ♀ juv. 1885, Frederikshaab ♂ 1896 (H. WINGE 1898, p. 77) Nanortalik ♂ ad. 10th May 1908 (E. L. SCHIØLER 1911, p. 66), North Greenland ♂ ad. 1910, Kangâmiut near Sukkertoppen ♂ juv. summer 1903, Godthaab ♂ ad. 29th Dec. 1921 (E. L. SCHIØLER 1925, p. 285; the

last one mentioned only in explanation of plate), Godhavn ♀ juv. Nov. 1924 (E. L. SCHIØLER 1926, p. 336), and Godthaabsfjord ♂ 31st Oct. 1931 (K. OLDENDOW 1933, p. 14).

The following record can now be added:

A juvenile was shot at Godhavn, Disco, in the spring of 1909 and by Dr. M. P. PORSILD sent to the Zoological Museum (C. N. 98). Speculum entirely brown; a whitish spot at the base of bill. Wing measures 180 mm, culmen 35 mm.

Anas acuta L.

Anas acuta LINNAEUS, Syst. Nat., Ed. X, Vol. I, p. 126 (1758—Europe; type-locality restricted to Sweden).

The Pintail.

I have not distinguished between the two races *A. a. acuta* L. and *A. a. tzitzihoa* Vieill., as this is quite impossible in most specimens. I very much doubt the maintenance of a distinct American race (*tzitzihoa*), as only a few old males show the racial characters. *A. a. tzitzihoa* is said to differ in having a broader speculum in males and attaining a longer tail in older males. Of five adult males of the American race in fine nuptial plumage, belonging to the Zoological Museum and examined by me, only one had the speculum broader than the European specimens with which it was compared. The length of tail in a long series of Danish and Iceland males showed a large variation, measuring 152—192 mm, usually being about 180 mm. Five American specimens measured 155, 160, 183, 197, 212 mm, *i. e.* in a few cases having somewhat longer tails. According to H. WITHERBY (1924, p. 302) European specimens, however, may have tail-feathers measuring up to 209 mm, thus having almost as long tails as the largest American specimens. It does not seem reasonable to maintain the race *tzitzihoa* on such slender grounds. E. L. SCHIØLER (1925, p. 297) does not separate *tzitzihoa* but says that a specimen from Greenland (Godthaab 9th May 1893) agrees with *tzitzihoa*. I have examined this specimen; the tail is not complete and appears to be rather short, the speculum is not broader than in Danish birds. SCHIØLER further states that the wing-length is on an average larger in American birds (according to PHILIPS), but this is true only in a few cases. European adult males measure: wing 261—281 mm (measured by me), 5 American males measure 267, 270, 273, 282, 284 mm; the male from Godthaab mentioned above measures 278 mm. So the difference also here appears to be too small on which to base a subspecific division.

The Pintail has been recorded the following times from Greenland: Fiskenes ♂ Oct. 1823, Umanak ♂ about 1832, Julianehaab ♂ and ♀ about 1849, "West Greenland" ♂ about 1851, Frederikshaab ♂ about

1860, Prøven in Upernavik District 22nd May 1888 (flock of five, of which two shot) (H. WINGE 1898, p. 78), Nanortalik ♂ juv. 3rd Oct. 1910 (E. L. SCHIØLER 1911, p. 68), Sermilikfjord in Angmagssalik District ♀ 13th May 1913 (O. HELMS and E. L. SCHIØLER 1917, p. 172), Godthaab ♂ 9th May 1893, Lichtenfels in Godthaab District ♂ and ♀ 13th April 1918 (E. L. SCHIØLER 1925, p. 296), Scoresby Sound 1st and 2nd June 1928 (♂ and ♀, sight-record) (A. PEDERSEN 1930, p. 427), Nanortalik ♂ July 1926, Kangeq in Godthaab District ♀¹) 2nd Jan. 1928, Fiske-næs ♂ 12th May 1931, Itivleq in Julianehaab District ♂ spring 1931, Fiske-næs ♀ juv. 15th Sept. 1930, Frederikshaab ♂ end Sept. 1930 (K. OLDEN-DOW 1933, p. 15).

The following records are now added:

1. An adult ♂ in fine nuptial plumage was shot at Papiqatuk in Julianehaab District (between Nanortalik and Frederiksdal) on the 5th May 1937, and was by Dr. LAURENT CHRISTENSEN presented to FINN SALOMONSEN, who forwarded it to the Zoological Museum. The wing measures 280 mm, exposed culmen 51 mm, longest tail-feathers 207 mm. The long tail and the rather large wing measurements tend to show that this bird belongs to the so-called *tzitzihoa*, *i. e.* originating from America (cf. measurements above).

2. An adult ♂ in nuptial plumage was shot at Nanortalik (Julianehaab District), in the spring of 1902 by K. BUGGE, who presented the skin to Dr. G. MELDORF, whose widow gave it to the Zoological Museum (C. N. 47). Wing measures 264 mm, largest tail feathers 197 mm, exposed culmen 53 mm.

3. A juvenile ♂ was shot at Angmagssalik 1910 or 1911. The skin was presented to the Zoological Museum (C. N. 58) by the Reverend ROSING. The wing measures 265 mm, exposed culmen 49 mm.

4. A juvenile ♀ was shot at Narssaq near Godthaab 11th Sept. 1929. The skin was handed over to the Zoological Museum (C. N. 73) by JOHN MØLLER. The wing measures 243 mm, exposed culmen 43 mm.

Anas penelope L.

Anas Penelope LINNAEUS, Syst. Nat., Ed. X, Vol. I, p. 126 (1758—Europe; type-locality restricted to Sweden).

The European Wigeon.

Breeding-grounds widely distributed in Iceland, the British Isles, northern Europe, and Asia; it has been recorded not infrequently in Greenland, but has not yet been found breeding there.

¹) Stated to be ♂ but said to be in "brownish plumage", so no doubt a ♀.

The following Greenland appearances are recorded: H. WINGE (1898 p. 78) mentioned a ♂ juv. sent down from Greenland by HOLBØLL in 1851. REINHARDT jun. had seen skins of two juv. from south Greenland. In FENCKER's collection 1 ♂ juv. and 1 juv. from Greenland were found. Later on the following have been recorded: 1 specimen end of Sept. 1897 (O. HELMS 1899, p. 232), ♂ juv. Arsuk 17th Dec. 1900 and 1 specimen from Angmagssalik 29th Sept. 1900 (O. HELMS 1904, p. 90), 2 ♀♀ juv. Julianehaab autumn 1905, ♀ juv. Godthaab 7th Oct. 1906, ♂ juv. Julianehaab 16th Nov. 1906, ♀ juv. Julianehaab 25th Sept. 1908, ♀ juv. Julianehaab 7th Nov. 1909, ♂ juv. Nanortalik 21st Nov. 1909 (E. L. SCHIØLER 1911, p. 66), ♂ ad. Qaersuaarsuk, Umanak 25th May 1920 (A. BERTELSEN 1921, p. 147), Angmagssalik 16th Oct. 1902, Kap Dan near Angmagssalik 10th Oct. 1905, Angmagssalik 25th Sept. 1908, Angmagssalik 21st Oct. 1914 (O. HELMS 1926, p. 225), Angmagssalik 13th July 1931 (sight-record) (F. S. CHAPMAN 1932, p. 495), Sârdloq, Godthaabsfjord 10th June 1926 (K. OLDENDOW 1933, p. 14). E. L. SCHIØLER (1925, p. 372) states that he received 11 Wigeons in all from West-Greenland; seven of these are mentioned above, the four remaining, according to his catalogue, are, ♂ ad. Julianehaab 10th May 1913, ♂ ad. Julianehaab 13th January 1916, ♀ Frederikshaab 30th Oct. 1911, and ♂ Julianehaab beginning of Oct. 1913. To these the following can now be added; all the skins are kept in the Zoological Museum.

1. ♀ juv. Narssaq near Julianehaab 26th Nov. 1902, received from Dr. G. MELDORF (C. N. 83). Wing 246 mm, exposed culmen 35 mm.
2. ♂ juv. Narssaq near Godthaab 4th Nov. 1895, received from Dr. TH. N. KRABBE (C. N. 81). Wing 248 mm, exposed culmen 34 mm.
3. ♀ juv. Narssaq near Godthaab 20th Dec. 1903, received from Dr. TH. N. KRABBE (C. N. 80). Wing 229 mm, exposed culmen 33 mm.
4. ♂ juv. Angmagssalik 1910—11, received from the Rev. ROSING (C. N. 104). Wing 254 mm, exposed culmen 34 mm.
5. ♂ ad. shot near Ikerasak, Umanak 20th June 1922. The bird was accompanied by a female and the birds were seen several times at a small lake near the houses of the settlement. Testes much enlarged; it seems probable therefore that the bird has bred. Shot by MATHIAS RIKARSEN, the skin received from Dr. A. BERTELSEN (C. N. 111). Wing 274 mm, exposed culmen 37 mm.
6. ♂ juv. Kangeq near Godthaab 25th Sept. 1929. Sent to the Museum by JOHN MØLLER (C. N. 152). Wing 245 mm, exposed culmen 35 mm.

Cygnus cygnus (L.).

Anas Cygnus LINNAEUS, Syst. Nat., Ed. X, Vol. I, p. 122 (1758—Europe; type-locality restricted to Sweden).

The Whooper Swan.

The Whooper Swan breeds from Iceland over North Scandinavia, Finland and Russia and North Siberia to Kamtschatka. In Greenland it appears now and then, and in the last century it may have bred in the southern part of the west coast.

The following Greenland records are known: West coast: Two adults Kap Farvel spring 1830, Julianehaab 1849 and 1850 (sight-records), in spring 1852 sight-records of flocks on the west coast south of 65°, several juv. Godthaab autumn 1852, ad. Atangmik north of Godthaab June 1859, juv. Arsuk 6th Oct. 1890 (H. WINGE 1898, p. 83), ad. Tunugdliarfikfjord east of Ivigtut May 1899 (O. HELMS 1904, p. 130), ♂ ad. *ibid.* 17th May 1899, ♂ ad. Kanajormiut 2nd Febr. 1912, Godthaab June 1920 (E. L. SCHIÖLER 1925, p. 400), Julianehaab District about 1909 (K. OLDENDOW 1933, p. 19), Sukkertoppen 15th March 1935, ♂ ad. Narssaq beginning of March 1935 (F. SALOMONSEN 1935, p. 13). East coast: Several specimens at Loch Fine 21st Aug. 1923 (sight-record), Liverpool coast 15th June 1928 (A. PEDERSEN 1930, p. 428), Kap Dan 20th April 1900, 3 specimens Kap Dan 4th May 1901, 2 specimens Sarfaq near Angmagssalik beginning of June 1901 (O. HELMS 1904, p. 91), 7 specimens seen in Sermilikfjord near Angmagssalik 6th July 1903, Sarfakajik near Angmagssalik 20th May 1924, Qingaq at Angmagssalik 19th June 1925 (O. HELMS 1926, p. 227).

To these can be added the following new records from Angmagssalik:

1. An adult female was shot at Qingaq in June 1924. Parts of the skin with head and neck were sent to E. L. SCHIÖLER by Civil-Engineer K. WILLIAM JØRGENSEN; they are now kept in the Zoological Museum.

2. A juvenile specimen was shot at Kûngmiut in Sept. 1929. The skin was sent to the Zoological Museum (C. N. 29) by Governor A. T. HEDEGAARD. The wing measured 568 mm, exposed culmen 86 mm.

3. An adult specimen was shot at Angmagssalik 11th May 1936; the skin was handed over to the Zoological Museum (C. N. 31) by GIZ JOHANSEN. The wing measured 560 mm.

It is reasonable to suppose that all the Swans observed at the coasts of Greenland originate from Iceland, where this species is commonly breeding. The Icelandic Swans, according to the collection, may seem on an average to be a trifle smaller than the European specimens, and SCHIÖLER, therefore, (1925, p. 399) tried to separate them as a distinct subspecies

(*Cygnus cygnus islandicus*); as however many individuals cannot be determined as to race, the Icelandic subspecies cannot be upheld (cf. E. HARTERT and F. STEINBACHER 1932—38, p. 431).

Aythya marila marila (L.).

Anas Marila LINNÆUS, Fauna Svecica, Ed. XI, p. 39 (1761—Lapland).

The Scaup-Duck.

This species, whose breeding-grounds are to be found not only in North America but also in Iceland, where it is very numerous, in the Faroes, Scandinavia, North Russia, and North Siberia, has occurred a number of times in Greenland.

The Greenland records are as follows: 2 ♂♂ ad. and 1 ♀ Nanortalik (H. WINGE 1898, p. 84), ♂ ad. and ♀ ad. Danmark's Havn 2nd July 1907 (only the ♂ captured) (A. L. V. MANNICHE 1910, p. 15), ♂ ad. Angmagssalik 12th May 1909 (O. HELMS 1910, p. 130), ♂ juv. Nanortalik 19th Nov. 1909 (E. L. SCHIØLER 1926, p. 103), 5 ♂♂ ad. at Hochstetter Vorland 22nd Sept. 1929 (B. LØPPENTHIN 1932, p. 26); finally K. OLDENDOW (1933, p. 20) records a specimen shot at Utorqarmiut in Godthaab District in Nov. 1928; he cannot, however, answer for the racial and sexual determinations. This skin is now kept in the Zoological Museum of Copenhagen (C. N. 112); it was sent by JOHN MØLLER, who stated that the bird was shot in Nov. 1929; it is a young bird, and according to the wing length (205 mm) it must be a young female. Since it is a young individual the shortness of the wing gives no evidence as to whether it may be the North American subspecies *Aythya m. affinis* EYTON, but the length of the bill, 30 mm, and notably its considerable breadth and its big nail leave no doubt that it should be referred to the typical form.

Finally the following new record should be mentioned:

An adult female was shot in May 1902 at Nanortalik; the skin was secured by Dr. G. MELDORF, whose widow presented it to the Zoological Museum (C. N. 61). The wing measured 208 mm, culmen 40.5 mm, the bill is broad (the dried up bill measures 24 mm) and the nail is 9.5 mm broad.

Melanitta fusca fusca (L.).

Anas fusca LINNÆUS, Syst. Nat., Ed. X, Vol. I, p. 123 (1758—Europe; type-locality restricted to Sweden).

The Velvet Scoter.

The breeding-area of this species reaches from Norway and Sweden to Novaya Zemlya and northeastern Siberia; it has strayed to the Faroes.

From Greenland two previous records are known, *viz.* from Kingigtoq near Godthaab in May 1878 (H. WINGE 1898, p. 92), and a juvenile from Fiskenæs Jan. or Feb. 1916 (E. L. SCHIØLER 1917, p. 174). To these the following record can now be added:

An adult male in eclipse dress was shot at Narssaq near Godthaab 7th March 1911. The skin was presented to the Zoological Museum (C. N. 19) by Dr. TH. N. KRABBE. Wing 283 mm, exposed culmen 44.5 mm. The feathers of bill leave no doubt as to the determination of species.

— (In the Zoological Museum there is a skin of a *Melanitta* sp., juv. bought in "Greenland" in Dec. 1894 by SCHEEL. As the head is missing, nothing definite can be said of the species.)

***Branta leucopsis* (Bechst.).**

Anas leucopsis BECHSTEIN, Orn. Taschenb., Vol. II, p. 424 (1803—Germany).

The Barnacle-Goose.

The Barnacle-Goose breeds in Northeast Greenland and migrates in the autumn southwards to the winter-quarters off the coasts of Western Europe. In America it is only a casual visitor, being recorded from southern Baffin Land south to New York (Long Island) and North Carolina. In Western Greenland it is said by HOLBØLL (about 1840) to be a regular passage-migrant in the autumn in the southernmost part of the country (Julianehaab District), but no specimen has been captured. H. WINGE (1898, p. 123) mentions a record from Grædefjord (in the southern part of Godthaab District) ♂ 8th May 1874. Since this time the Barnacle-Goose has not been recorded from Western Greenland¹).

It is very interesting therefore that a Barnacle-Goose was shot at Akúnâq, Egedesminde District in the last days of May 1937. The Goose was naturally quite unknown to the Greenlanders at this place. Dr. M. P. PORSILD, leader of the Arctic Station at Disko sent head and feet of the bird to F. SALOMONSEN. These parts of the bird are now kept in spirit in the Zoological Museum in Copenhagen. The measurements are:

Bill: culmen 30 mm, height (at nostril) 17.5 mm, breadth (at nostril) 17 mm.

Right foot: tarsus 72 mm, middle-toe (with claw) 65 mm.

Left — : — 74 — , — - — 65 mm.

¹) P. FREUCHEN (1921, p. 103) states that the Barnacle-Goose is a regular spring-migrant in Thule together with the Brent Goose (*B. bernicla* (L.)), but this appears to be very improbable.

Podiceps auritus (L.).

Colymbus auritus LINNAEUS, Syst. Nat., Ed. X, Vol. I, p. 135 (1758—Europe and America; type-locality restricted to Sweden).

The Slavonian Grebe.

The Slavonian Grebe is an accidental autumn- and winter-visitor to Southern Greenland. Records, as follows: Nanortalik 12th Nov. 1828, Julianehaab 1842, "West Greenland" about 1844, Frederiksdal in Julianehaab District about 1870, Godthaab 1877, Arsuk 25th Nov. 1889 (H. WINGE 1898, p. 130), Angmagssalik juv. 8th Oct. 1900, Arsuk 28th Nov. 1900 (O. HELMS 1904, p. 97 and p. 131), Julianehaab 2 juv. autumn 1905, Nanortalik ♂ 30th Nov. 1909, *ibid.* ♀ 22nd Dec. 1909 (E. L. SCHIÖLER 1911, p. 76), Lichtenfels in Godthaab District 15th Nov. 1926 (H. SCHEEL 1927, p. 77), Arsuk 12th Nov. 1928 (K. OLDENDOW 1933, p. 43).

The following records are now added:

1. A specimen in fine summer-plumage was shot at Julianehaab July—Aug. 1935, and is now kept in the school in Julianehaab ("Efterskolen") where FINN SALOMONSEN has examined it. The wing measured 145 mm. In contrast to all previously captured Greenland specimens of the Slavonian Grebe this bird is in summer-plumage and was secured in the breeding-time. All Greenland specimens originate no doubt from Iceland, the nearest breeding-place of this species.

2. A juvenile bird, not sexed, was shot at Nanortalik in the autumn of 1897. The skin was secured by Dr. G. MELDORF, whose widow presented it to the Zoological Museum (C. N. 57). The wing measured 141 mm.

3. A juvenile bird, not sexed, was shot at Frederikshaab in the autumn of 1900. The skin was sent to the Zoological Museum (C. N. 43) by Governor BAUMANN. The wing measured 138 mm, exposed culmen 25 mm.

4. An adult bird, not sexed, was shot at Nanortalik about 18th Dec. 1901; the skin was secured by Dr. G. MELDORF, whose widow presented it to the Zoological Museum (C. N. 58). The wing measured 143 mm, exposed culmen 24 mm.

Podiceps griseigena griseigena (Bodd.).

Colymbus griseigena (rectius *griseigena*) BODDAERT, Table Planch. Enlum., p. 55 (1783—France; fixed by Witherby).

The Red-Necked Grebe.

This subspecies which has its nearest breeding-places in Sweden, Denmark, and Germany, is not uncommon in winter off the coasts of the British Isles.

From Greenland hitherto there is only one record, *viz.* from the Sukkertoppen District 1933 (F. SALOMONSEN 1935, p. 15).

To this record can now be added: A specimen in winter plumage shot in South-Greenland, Julianehaab District in February 1934. The skin was presented to the Zoological Museum (C. N. 69) by Dr. A. BERTELSEN. Wing measured 184 mm, exposed culmen 46 mm, middle-toe 67 mm, sizes which all fall distinctly within the limits of the European subspecies.

***Podiceps griseigena holboellii* Reinhardt.**

Podiceps Holboellii REINHARDT, Vidensk. Medd. Nat. For., p. 76 (1853—Nanortalik, Greenland).

Holbøll's Grebe.

Holbøll's Grebe is an irregular winter-visitor to the southernmost part of West Greenland, where it has been captured a number of times; it has once been secured in Southeast Greenland. The following records are known: Julianehaab Nov. 1839, Nanortalik 1851, Julianehaab about 1856, Nanortalik 19th Dec. 1880 (H. WINGE 1898, p. 131), Arsukfjord ad. in summer-plumage summer 1899 (O. HELMS 1904, p. 132), Angmagssalik 23rd Jan. 1909 (O. HELMS 1909, p. 130), Julianehaab Nov. 1905, *ibid.* ♀ 21st Nov. 1908 (E. L. SCHIØLER 1910, p. 149; and 1911, p. 76), Frederikshaab ♂ ad. in summer-plumage 12th April 1927 (H. SCHEEL 1927, p. 80), Avigait in Frederikshaab District end Jan. 1929 (♂ and ♀ captured, 4 more observed), Sukkertoppen 15th Jan. 1930, Frederikshaab 20th Febr. 1930, Narssaq in Godthaab District ♂ 15th Febr. 1931 (K. OLDENDOW 1933, p. 43), Julianehaab District early Oct. 1913, Frederiksdal in Julianehaab District 1902, Sydprøven in Julianehaab District juv. Nov. 1931 (F. SALOMONSEN 1935, p. 14). To these records the following ones have to be added:

1. A young specimen from "West Greenland" (without date) is kept in Herlufsholm Skole, from where it by the courtesy of Lektor JOHS. FERDINAND was sent to F. SALOMONSEN for examination. It is in the transition from juvenile to first winter-plumage. Measurements: wing 189 mm, culmen: about 49 mm (tip broken).

2. An adult bird in winter plumage was shot on the island of Nanortalik 20th Dec. 1900; the skin was secured by Dr. G. MELDORF, whose widow presented it to the Zoological Museum (C. N. 38). Wing 198 mm, exposed culmen 54 mm.

3. A juvenile specimen, not sexed, was shot at Sâtut, Umanak, 15th Oct. 1926, by PAULUS NIELSEN; the bird was floating alone on the sea near the shore. Head, wings and feet were secured by Dr. A. BERTELSEN, who presented them to the Zoological Museum (C. N. 51).

Wing 191 mm, exposed culmen 48 mm. These measurements fall between the usual measurements of the American and European subspecies, but as the bird is not fully developed, this specimen should no doubt be referred to *Podicipes griseigena holboellii*.

4. A young bird moulting to 1st winter plumage was shot at Atangmik in Sukkertoppen District towards the end of October 1918. The skin was sent to E. L. SCHIØLER by Governor LANGSKOV. It was incorporated in the collection of the Zoological Museum (C. N. 76) together with SCHIØLER's collection. Wing 188 mm, exposed culmen 49, middle-toe 73 mm. These measurements are larger than those of the typical form, but a little smaller than those of *Podicipes griseigena holboellii*. As the individual is very young, it should therefore be referred to the latter subspecies.

5. A male was shot at Sukkertoppen 13th Dec. 1911 and by Dr. TH. N. KRABBE sent to E. L. SCHIØLER. The skin was incorporated in the collection of the Zoological Museum (C. N. 77). Wing 188 mm, exposed culmen 48 mm, middle-toe 69 mm. Both Nos. 4 and 5 were by SCHIØLER too in his catalogue referred to the American subspecies, and there he was certainly right.

***Oceanodroma leucorhoa leucorhoa* (Vieill.).**

Procellaria leucorhoa (rectius *leucorhoa*) VIEILLOT, Nouv. Dict. d'Hist. Nat., nouv. éd., Vol. XXV, p. 422 (1817—France).

Leach's Fork-tailed Petrel.

This Petrel, breeding Iceland, Faroes, British Isles, North American coasts etc., is a regular summer visitor to the southern parts of Davis Strait, where it is fairly abundant from May to August but more rare the rest of the year; breeding in Greenland has been suggested, but there is no proof. From East Greenland it is unknown. The following records from Greenland proper are published: On the Koek Islands off Godthaab not uncommon, breeding suggested (H. WINGE 1898, p. 139, K. OLDENDOW 1933, p. 49; cf. however E. L. SCHIØLER 1926, p. 49), Fiskenæs 16th Oct. 1840, Godhavn 31st Oct. 1865, Hunde Ejland in Disko Bay Aug. 1878, Disko Fjord Aug. 1878 (two specimens, sight-record), Arsuk 12th Oct. 1893 (H. WINGE 1898, p. 139), Atangmik in Sukkertoppen District ♀ 31st Nov. 1926, Kangeq in Godthaab District ♂ 10th Dec. 1926 (K. OLDENDOW 1933, p. 49). Most of the specimens recorded from the Greenland coast have been driven inland during storm and picked up dead. The records above show that Leach's Forktailed Petrel was not known farther north than Disko (about 69° n. lat.); the new records, which are now added, extend its distribution in Greenland

much more to the north, right up to Upernavik District. The following records are added:

1. A specimen captured at Sukkertoppen in 1928, belonging to the collection of Mr. RUDOLF SAND, Copenhagen, examined by FINN SALOMONSEN. Wing 151 mm, culmen 15.5 mm.

2. A specimen captured at Jakobshavn during 1936, belonging to the collection of Mr. RUDOLF SAND, Copenhagen, examined by FINN SALOMONSEN. Wing 149 mm, culmen 16 mm.

3. A specimen captured 1st Nov. 1926, belonging to the bird-collection in Herlufsholm School (Næstved), examined by FINN SALOMONSEN. Unfortunately, no locality is given on the label, but the bird probably originates from Sukkertoppen or Godthaab, as in these districts two other specimens were captured in this period (cf. records given above). Wing 160 mm, culmen 15 mm.

4. A specimen was found dead at Marmorilik in Umanak District 16th Oct. 1937 and was by Mr. HANNIBAL FENCKER sent to F. SALOMONSEN, who forwarded it to the Zoological Museum. Wing 152 mm, culmen 17 mm. Mr. FENCKER tells (*in litt.*) that as early as the 15th Oct. two specimens were observed flying in the vicinity of Marmorilik, but disappeared. Perhaps it was one of these birds which was picked up dead the next day.

5. A specimen was shot about 4 miles east of Prøven in Upernavik District on the 15th Oct. 1937 after a series of days of bad weather. This is perhaps one of the birds mentioned above from the same date (under no. 4). The bird was by Mr. A. LUND-DROSVAD sent to Director K. OLDENDOW who presented it to F. SALOMONSEN; it is now in the Zoological Museum. Wing 152 mm, culmen 16 mm. This record constitutes the most northern occurrence of the Fork-tailed Petrel in Greenland.

6. A specimen was secured at Julianehaab and bought in March 1891 by Mr. SCHEEL; the skin is now in the Zoological Museum (C. N. 13). Wing 151 mm; culmen 16 mm.

7. Another specimen was also secured at Julianehaab and bought in March 1891 by Mr. SCHEEL; this skin too is now incorporated in the collection of the Zoological Museum (C. N. 43). Wing 157; culmen 16 mm.

8. A specimen was secured at Neria in South Greenland in May 1901 and by Mr. NYEKJÆR handed over to the Zoological Museum (C. N. 40). Wing 155 mm, culmen 16 mm.

9. A specimen was secured at Sukkertoppen in the autumn 1902, and sent to the Zoological Museum by Governor KOCH (C. N. 14). Wing 149 mm, culmen 16.5 mm.

10. A specimen was secured at Narssalik 16th Nov. 1905 and sent to the Zoological Museum (C. N. 16) by Mr. NYEKJÆR. Wing 153 mm, exposed culmen 15 mm.

11. A specimen was secured at Agto 31st Oct. 1910, and the skin was sent to the Zoological Museum through Dr. V. NORDMANN (C. N. 18). Wing 156 mm, culmen 16 mm.

12. A specimen was captured at Nyherrnhut 19th Nov. 1893; the skin was handed over to the Zoological Museum (C. N. 2) by Dr. TH. N. KRABBE. Wing 146 mm, culmen 16.5 mm.

13. A specimen was secured at Holsteinsborg 8th Oct. 1899; the skin was handed over to the Zoological Museum (C. N. 3) by Dr. TH. N. KRABBE. Wing 154 mm, culmen 16.5 mm.

14. A specimen was secured at Kangeq at Godthaab 10th Nov. 1915; the skin was presented to the Zoological Museum (C. N. 45) by Mr. C. G. BANGERT. Wing 151 mm, culmen 15.5 mm.

15. An adult male was secured at Godthaab 10th June 1921; the skin was sent to the Zoological Museum (C. N. 93) by JOHN MØLLER. Wing 160 mm, culmen 17 mm.

16. A specimen was secured at Narssaq at Nordprøven 5th Nov. 1920 by Mr. H. LUND jun.; the skin was sent to the Zoological Museum (C. N. 70) through Governor J. PETERSEN. Wing 146 mm, culmen 16 mm.

In addition, the following skins are kept in the Zoological Museum originating from the late E. L. SCHIØLER's collection:

17. A specimen from Julianehaab Nov. 1905, forwarded by Mr. JENSEN (C. N. 106) Wing 145 mm, culmen 16 mm.

18. A specimen from Julianehaab, forwarded by Dr. H. DEICHMANN (C. N. 108), wing 147 mm, culmen 16 mm.

19. A female secured at Holsteinsborg 18th June 1907, forwarded by Mr. SØRENSEN (C. N. 102). Wing 157 mm, culmen 15.5 mm.

20. A male secured at Nanortalik 29th April 1910, sent by Mr. HASTRUP (C. N. 103), Wing 151, culmen 16 mm.

21. A specimen secured in "North Greenland" about 1910 was brought home by Dr. TH. N. KRABBE (C. N. 111). Wing 157 mm, culmen 15.5 mm.

22. A specimen secured at Nyherrnhut 18th Nov. 1893, brought home by Dr. TH. N. KRABBE (C. N. 105), wing 152 mm, culmen 16 mm.

23. A specimen secured at Lichtenfels 22nd Nov. 1893, brought home by Dr. TH. N. KRABBE (C. N. 45), wing 153 mm, culmen 15.5 mm.

24. A specimen collected at Godthaab 5th Dec. 1909, and brought home by Dr. TH. N. KRABBE (C. N. 104), wing 148 mm, culmen 16 mm.

25. A specimen secured at Godthaab 26th Oct. 1904, brought home by Dr. TH. N. KRABBE (C. N. 112), wing 158 mm, culmen 16 mm.

26. A specimen collected at Nanortalik 4th May 1914, forwarded by Mr. LANGSKOV (C. N. 107), wing 158 mm, culmen 16.5 mm.

27. A specimen collected at Ûgarsiorfik at Fiskenæs 17th Aug. 1916 (C. N. 109) sent by Mr. MOTZFELDT; wing 155 mm, culmen 17 mm.

28. A male collected at Fiskenæs 11th June 1918; sent by Mr. MOTZFELDT (C. N. 110), wing 156 mm, culmen 16 mm.

29. A specimen collected at Narssaq at Godthaab 24th Nov. 1909; brought home by Dr. TH. N. KRABBE. The skin is enumerated in SCHIÖLER's catalogue, but presumably not kept in the Zoological Museum.

***Crex crex* (L.).**

Rallus-Crex LINNAEUS, Syst. Nat., Ed. X, Vol. I, p. 153 (1758—Europe. Restricted type-locality: Sweden).

The Land-Rail.

The Land-Rail is a rare visitor to Greenland, where it has been met with about a dozen times, usually in the autumn. Previous records: West Greenland: ♀ Godthaab 1851, Egedesminde July 1887, Sukkertoppen 11th May 1892, Julianehaab spring 1894 (H. WINGE 1898, p. 145), Sukkertoppen 8th Sept. 1901, Julianehaab District autumn 1906, Sukkertoppen ♂ 8th Sept. 1906 (E. L. SCHIÖLER 1911, p. 77), Atangmik Sept. 1926, Jakobshavn ♂ 27th Sept. 1928, Arsuk ♂ 5th Oct. 1930, Godthaab ♀ 30th Sept. 1931 (K. OLDENDOW 1933, p. 52). East Greenland: Angmagssalik 19th Sept. 1901, Angmagssalik 25th Oct. 1912 (O. HELMS 1926, p. 241), Angmagssalik 1921 (A. PEDERSEN 1930, p. 455).

The Land-Rail is a palæarctic species breeding in Europe northwards to the Faroes and northern Norway (up to the polar-circle); it has not been met with in Iceland (B. SÆMUNDSSON 1936), but in North America it is a casual visitor, recorded from Baffin Land, Newfoundland (?), Nova Scotia, Maine, Rhode Island, Connecticut, New York, New Jersey, Maryland and from Bermuda (CHECK-LIST etc. 1931, p. 99).

To this three new records can now be added:

1. A Land-Rail ♀ was found dead at Julianehaab, about 1st Febr. 1936. The wing measured 145 mm, exposed culmen 21 mm. The bird was handed over to Dr. LAURENT CHRISTENSEN, who presented it to F. SALOMONSEN. It is now in the Zoological Museum.

2. A young specimen was shot at Sigssarigsoq near Nanortalik 11th Sept. 1900. The skin was secured by Dr. G. MELDORF, whose widow presented it to the Zoological Museum (C. N. 22). Wing length 137 mm, exposed culmen 18 mm.

3. A young specimen was shot at Tuapait near Nanortalik 6th Oct. 1900 or 1901. The skin was secured by Dr. G. MELDORF, whose widow presented it to the Zoological Museum (C. N. 21). Wing length 130 mm, exposed culmen 20 mm.

Rallus limicola limicola Vieill.

Rallus limicola VIEILLOT, Nouv. Dict. d'Hist. Nat., nouv. Ed., Vol. XXVIII, p. 558 (1819—United States; type locality restricted to Pennsylvania).

The Virginia Rail.

A fully plumaged bird was shot at Godthaab 8th Oct. 1907 and secured by Dr. TH. N. KRABBE, who in 1912 presented the skin to the Zoological Museum (C. N. 1). Wing 108 mm, exposed culmen 40 mm. The skin was without any indication as to sex. This specimen is the first of this species known from Greenland.

The species is distributed as a breeding bird from southern British Columbia, Saskatchewan, southern Manitoba, southern Ontario, southern Quebec, Nova Scotia and New Brunswick, south to northern Lower California, Utah, Colorado, Nebraska, Missouri, southern Illinois, southern Ohio, Kentucky, New Jersey, and eastern North Carolina; also in Toluca Valley, Mexico. Occurs casually north to Hudson Bay, Labrador, and Newfoundland (CHECK-LIST etc. 1931, p. 97). The other closely allied subspecies of this species occur in South America; DICKEY however (Condor XXX, 1928, p. 322) tried to refer the Virginia Rails living along the Pacific coast to a distinct subspecies (*Rallus l. pacificus*), which is however of no importance in this connection.

Porzana porzana (L.).

Rallus Porzana LINNAEUS, Syst. Nat., Ed. XII, Vol. I, p. 262 (1766—Europe; type-locality restricted to France).

The Spotted Crane.

The Spotted Crane, which breeds in Europe from Norway and Finland down to the Mediterranean, has previously appeared 4 times in Greenland. The following records are known, being all from the west coast: Godthaab 28th Sept. 1841, Nanortalik about 1850, ad. Julianehaab 1878 (H. WINGE 1898, p. 145), Sukkertoppen 4th Nov. 1919 (F. SALOMONSEN 1935, p. 10).

To these the following two new records can be added:

1. An adult bird, unsexed, was shot at Ilua near Julianehaab in July 1908. The skin was presented to the Zoological Museum (C. N. 3) by Dr. TH. N. KRABBE. Wing measured 116 mm, exposed culmen 19 mm.

2. An adult bird, unsexed, was shot at Kangâmiut near Sukkertoppen in 1913. The skin was sent to the Zoological Museum (C. N. 4) by N. L. NIELSEN. Wing 118 mm, exposed culmen 19 mm.

Porzana carolina (L.).

Rallus carolinus LINNAEUS, Syst. Nat., Ed. X., Vol. I, p. 153 (1758—North America; type-locality restricted to Hudson Bay).

The Carolina Crake.

6 records were previously known from West Greenland, *viz.*: juv. Sukkertoppen 5th Oct. 1823, juv. Umanak spring 1881, juv. Nûgssuaq 30th Sept. 1882, 1 specimen from "West Greenland" without date, Frederikshaab summer 1895 (H. WINGE 1898, p. 146), ♂ juv. Timerdlit at Evighedsfjord 8th Sept. 1919 (F. SALOMONSEN, 1935, p. 11).

To these the following two new records can now be added:

1. A young bird was captured at Frederikshaab end of August 1913; the skin was presented to the Zoological Museum (C. N. 5) by the Rev. K. WASSMANN. Wing 105 mm, exposed culmen 21 mm.

2. An unsexed bird was shot at Frederikshaab 16th Sept. 1925; it was sent to E. SCHIÖLER in a decayed condition by Dr. V. BRUUN; it is now kept in the Zoological Museum as a mummy (C. N. 6). Wing 112 mm, exposed culmen 20 mm.

Fulica atra atra L.

Fulica atra LINNAEUS, Syst. Nat., Ed. X, Vol. I, p. 152 (1758—Europe; type-locality restricted to Sweden).

The Coot.

The European Coot has appeared several times in Greenland. The following records are known: Kangeq, autumn 1877, Nanortalik 26th Oct. 1881, Julianehaab spring 1894 (H. WINGE 1898, p. 146), Angmagssalik 5th May 1914 (O. HELMS 1917, p. 172), ♂ Nanortalik Oct. 1925, 2 ♀♀ Julianehaab 10th May 1928, ♂ Lichtenau end of April 1929, Frederiksdal autumn 1932 (K. OLDENDOW 1933, p. 55).

To these can be added:

An adult male shot at Julianehaab 5th Nov. 1926. The skin was sent to E. L. SCHIÖLER, with whose collection it came to the Zoological Museum. Wing 214 mm, culmen and frontal shield 51.5 mm.

Fulica americana Gml.

Fulica americana GMELIN, Syst. Nat., Vol. I, part 2, p. 704 (1789—North America).

The American Coot.

This American species has appeared three times on the west coast of Greenland, *viz.* at Christianshaab 1854, Godthaab 1854 (H. WINGE

1898, p. 147), and ♂ at Sydprøven 5th Nov. 1915 (E. L. SCHIØLER 1917, p. 174).

To these the following records can now be added:

1. An adult bird, unsexed, was shot at Utorqarmiut near Godthaab 20th Nov. 1908; the skin was presented to the Zoological Museum (C. N. 1) by Dr. TH. N. KRABBE. Wing 197 mm, exposed culmen and frontal shield 46 mm.

2. An adult bird, unsexed, was shot at Qeqertarssuaq near Frederikshaab 4th Nov. 1911; the skin was handed over to E. SCHIØLER through Dr. TH. N. KRABBE, and with SCHIØLER's collection came to the Zoological Museum (C. N. 2). Wing 193 mm, culmen and frontal shield 43 mm.

3. A juvenile bird was shot in Frederikshaab in September 1924; Governor IBSEN sent the skin to E. L. SCHIØLER, in whose collection it has not been possible to find it; it is only possible to quote his catalogue.

Vanellus vanellus (L.).

Tringa Vanellus LINNAEUS, Syst. Nat., Ed. X, Vol. I, p. 148 (1758—Europe, Africa. Restricted type-locality: Sweden).

The Lapwing.

This old-world visitor to Greenland has been recorded the following times from Greenland: Fiskenaes 7th Jan. 1820, Sârdloq in Julianehaab District mid-April 1847, West Greenland 1869, Frederikshaab 4th Dec. 1876 (two specimens), Godthaab spring 1891 (H. WINGE 1898, p. 147), Julianehaab ♀ autumn 1905 (E. L. SCHIØLER 1911, p. 77), Nanortalik 16th Nov. 1915, Nanortalik 17th Nov. 1915, Sukkertoppen ♂ 29th Jan. 1917, Godthaab ♀ 29th Jan. 1917, Godthaab ♀ 30th Jan. 1917 (O. HELMS and E. L. SCHIØLER 1917, p. 174), Nanortalik ♂ end April 1928, Agpamiut in Sukkertoppen District ♀ 11th March 1929 (K. OLDENDOW 1933, p. 56), Angmagssalik 8th Dec. 1933 (F. SALOMONSEN 1935 b, p. 112).

The following records have to be added:

1. A specimen, no doubt a female, was shot at Nûk (a small settlement between Augpilagtoq and Prins Christian's Sund in Julianehaab District) about Febr. 1934. The wing measured 221 mm, exposed culmen 21 mm. The upper-parts were abraded and lacking most of the buff edges, the throat white, the crown rather dull coloured, crest rather short (60 mm), wing pointed (second primary between fifth and sixth); so it was no doubt a female. This bird was by Dr. LAURENT CHRISTENSEN forwarded to F. SALOMONSEN, who presented it to the Zoological Museum.

2. A specimen, probably a young bird in its first autumn plumage was shot at Itivdleq at Kap Farvel by MATHIAS BENJAMINSEN about 9th October 1900; this skin came into the possession of Dr. MELDORF; at his death it was bought by the Zoological Museum (C. N. 97). The wing measured 229 mm, exposed culmen 23 mm. The pointed wing (second primary between fifth and sixth) shows that in all probability it is a young female.

Squatarola squatarola squatarola (L.)¹.

Tringa Squatarola LINNAEUS, Syst. Nat., Ed. X, Vol. I, p. 149 (1758—Europe; type-locality restricted to Sweden).

The Grey Plover.

This high-arctic Plover having an almost circumpolar breeding-area is only an accidental visitor to Greenland, from where it has been recorded a number of times: Godthaab about 1832, Nanortalik Sept. 1840 (3 specimens), Ameralikfjord Aug. about 1840, "West Greenland" 1851, Nûgssuaq Pen. spring 1868, Egedesminde spring 1869, Ikamiut in Egedesminde District July 1883, Grønne Ejland in Disko Bay 25th June 1889, Holsteinsborg June 1893 (H. WINGE 1898, p. 148), Holsteinsborg ♀ 24th May 1901, Nanortalik juv. Sept. 1907, Sukkertoppen 29th June 1910 (E. L. SCHIØLER 1911, p. 77), Ikerasak in Umanak District June 1913, Nûgssuaq Pen. June 1916 (A. BERTELSEN 1921, p. 161), Narssaq in Godthaab District 10th Nov. 1925, Sarfânguaq in Holsteinsborg District autumn 1927 (K. OLDENDOW 1933, p. 56), Carlshavn in Hudson Land, Northeast Greenland 24th June 1923 (F. SALOMONSEN 1935, p. 9).

The following new records are now added:

1. A young bird shot at Julianehaab in Nov. 1936 and by Dr. LAURENT CHRISTENSEN sent to F. SALOMONSEN who forwarded it to the Zoological Museum. The wing measures 182 mm; the bill is broken.

2. An adult female shot at Grønne Ejland 28th June 1889, and sent to the Zoological Museum (C. N. 11) by Governor R. MØLLER and Mr. P. MØLLER. Wing 194 mm, exposed culmen 31 mm.

3. An adult female shot at Egedesminde 4th July 1903; the skin was sent to the Zoological Museum (C. N. 12) by Governor KOCH. Wing 187 mm; exposed culmen 28.5 mm.

¹) The question whether the Grey Plover may be divided into two races or not is still unsettled. According to G. DEMENTIEV's recent investigation (1939, p. 352) East-Asiatic specimens are on an average larger, and in my opinion they may be separated as *S. s. australis* Reichenbach. Cf. also F. SALOMONSEN 1935, p. 10.

4. An adult female shot in spring 1909 at Godhavn; the skin was sent to the Zoological Museum (C. N. 21) by Mr. M. P. PORSILD. Wing 183 mm, exposed culmen 30 mm.

5. An adult male in fine breeding dress shot at Godhavn in spring 1911; the skin was sent to the Zoological Museum (C. N. 20) by Mr. M. P. PORSILD. Wing 189 mm, exposed culmen 29.5 mm.

6. An adult male in fine breeding dress shot at Ikerasak near Umanak in 1928. The mummy was presented to the Zoological Museum (C. N. 72) by Dr. A. BERTELSEN. Wing 188 mm, exposed culmen 30 mm.

7. An adult male in fine breeding dress was shot on the northern side of the mouth of Isortoq near Sukkertoppen in May 1932; the skin was sent to the Zoological Museum (C. N. 76) by Mr. N. L. NIELSEN. The wing measures 190 mm, exposed culmen 28.5 mm.

The following two skins from SCHIØLER's collection are also kept in the Zoological Museum.

8. An adult male shot at Ikerasak at Umanak 22nd July 1910; "nearly at the same time a specimen was shot at Niakornet and several were seen" records Dr. H. DEICHMANN, who sent the skin. The wing measures 192 mm, exposed culmen 28.5 mm.

9. A young bird shot at Sukkertoppen 18th Sept. 1892 and sent by Dr. TH. N. KRABBE. Wing 192 mm, exposed culmen 24.5 mm.

It is seen from the above that the Grey Plover has been observed about 30 times on the west coast of Greenland, right from Nanortalik and to Nûgssuaq, and once on the northeast coast.

Charadrius apricarius altifrons Brehm.

Charadrius altifrons BREHM, Handb. Naturg. Vög. Deutschl., p. 542 (1831—Faroes).

The Northern Golden Plover.

This bird breeds in the arctic and subarctic parts of the palæarctic region from Iceland and the Faroes eastwards to Yenesei, and is an occasional visitor to the southern parts of Greenland. In the last 70 years it has been met with a good many times; some students have even suggested that it was a regular breeding-bird in South Greenland. This appears to be very probable, but there is no proof as yet. The Golden Plover is most often met with from the end of May to the end of June, which shows that its occurrence in South Greenland probably is due to an extension of the spring-migration beyond the usual limit (cf. the Whimbrel p. 30).

Besides some few doubtful records from older times based on observations only or on skins now lost, the following occurrences of the Northern Golden Plover in Greenland are known: "West Greenland" 1869, Sarqaq on Nûgssuaq Pen. spring 1871, Nanortalik 1880, Christianshaab 15th June 1880 (both ♂ and ♀), "West Greenland" about 1880 (2 skins), Qagssimiut in Julianehaab District summer 1895 (small flock, of which two were shot) (H. WINGE 1898, p. 151), Angmagssalik ad. in summer-plumage about 1898 (O. HELMS 1899, p. 233), Sermilikfjord in Angmagssalik District 2nd May 1902, *ibid.* end May 1902, Narssalik (north of Arsuk) ad. in summer-plumage about 1901 (O. HELMS 1904, p. 99 and 132), Angmagssalik 21st May 1903, *ibid.* 2nd June 1907 (besides many sight-records from May—June) (J. PETERSEN 1908, p. 8), Angmagssalik 10th May 1924 (besides 3 undated skins from here) (O. HELMS 1926, p. 242), Liverpool Land ♂ 28th May 1928, Jameson Land ♂ 17th June 1929, Cape Hope (at Scoresby Sound) juv. 2nd Sept. 1928 (besides many sight-records from end May to mid-June) (A. PEDERSEN 1930, p. 455), Qôrnoq ♂ 6th June 1925¹⁾, Qagssimiut ♀ 20th April 1926, Narssaq in Godthaab District ♂ 21th May 1926, Qôrnoq 1st Nov. 1926, Angmagssalik Aug. 1928, Sarfánguaq (no date), Godthaab ♀ 29th May 1931 (K. OLDENDOW 1933, p. 57), Cape Dalton at Scoresby Sound 11th July 1932 (sight-record) (M. DEGERBØL and U. MØHL-HANSEN 1935, p. 16), Angmagssalik 11th May 1931 (sight-record of 3 specimens) (F. S. CHAPMAN 1932, p. 495), Rosenvinge Bay at Scoresby Sound ♀ 25th May 1933 (P. TCHERNIAKOVSKY 1939, p. 343).

Judging from the records above it appears that the Golden Plover is becoming more frequent in Greenland in recent years. This assumption is confirmed by the new records, which now can be added:

1. An adult ♀ in summer-plumage shot at Frederiksdal 1934 (judging from the plumage no doubt captured in May—June) and by Dr. LAURENT CHRISTENSEN sent to FINN SALOMONSEN, who forwarded it to the Zoological Museum. The wing measures 185 mm, exposed culmen 23 mm.

2. An unsexed young bird in juvenile plumage shot at Julianehaab 1st Sept. 1935 and by Dr. LAURENT CHRISTENSEN sent to FINN SALOMONSEN, who forwarded it to the Zoological Museum. The wing measured 184 mm, exposed culmen 23 mm.

3. An adult ♂ in summer plumage shot at Frederiksdal in Julianehaab District 8th May 1936 and by Dr. LAURENT CHRISTENSEN sent to FINN SALOMONSEN, who forwarded it to the Zoological Museum. The wing measures 178 mm, exposed culmen 21.5 mm.

4—8. Five specimens, all being adult birds in fine summer-plumage,

¹⁾ Judging from the description this specimen probably belongs to *C. d. dominicus* MÜLL.

captured at different localities in Julianehaab District spring 1937 and by Dr. LAURENT CHRISTENSEN forwarded to FINN SALOMONSEN, who presented them to the Zoological Museum:

Qagssimiut	♂	28th April 1937,	wing 189 mm,	culmen 23 mm.
Nanortalik	♂	8th May 1937,	— 190 mm,	— 22 mm.
Nanortalik	♀	8th May 1937,	— 189 mm,	— 22.5 mm.
Itivdleq	♂	3rd May 1937,	— 193 mm,	— 23 mm.
Augpilagtoq	♂	3rd May 1937,	— 192 mm,	— 23 mm.

The capture of these specimens shows that a large irruption of Golden Plovers took place between the end of April and early May in southernmost West Greenland covering the coast right from Kap Farvel (Itivdleq on Eggerts Ø not far from Kap Farvel) up to Qagssimiut somewhat north of Julianehaab. Dr. LAURENT CHRISTENSEN tells *in litt.* to F. SALOMONSEN that in spring 1937 up to 50 specimens were shot in the southern parts of Julianehaab District and were offered him for sale, and he adds that no doubt this bird is becoming commoner in these years.

9. An adult ♂ in summer-plumage was shot at Angmagssalik 5th June 1937 and by the late Governor RASSOW sent to Director K. OLDENDOW, who presented it to FINN SALOMONSEN; it is now in the Zoological Museum. The wing measured 189 mm, exposed culmen 21.5 mm. Governor RASSOW writes that it belonged to a flock of three birds, all of which were shot. Perhaps these birds formed a part of the large irruption—probably coming from Iceland—which was observed in Southwestern Greenland in the same period (cf. Nos 4—8, above).

The following skins are kept in the Zoological Museum, sent from Greenland at different times:

10. An adult bird, unsexed, shot at Narssalik 30th April 1906; the skin was sent by Mr. J. NYEKJÆR (C. N. 86). Wing 197 mm, exposed culmen 23 mm.

11. An adult specimen, unsexed, shot at Utorqarmiut near Godthaab 5th Dec. 1900; the skin was sent by Dr. TH. N. KRABBE (C. N. 93). Wing 176 mm, bill broken.

12. An adult bird, unsexed, shot at Isua near Lichtenau in the beginning of Oct. 1911; the skin was sent by the Rev. P. RÜTTEL (C. N. 94). Wing 184 mm, exposed culmen 22 mm.

13. An adult bird, unsexed, shot at Nanortalik near Julianehaab 5th May 1933; the skin was sent by Dr. A. BERTELSEN (C. N. 259). Wing 184 mm, exposed culmen 21.5 mm.

14—15. Two adult birds, unsexed, shot at Angmagssalik 10th May 1936; the skins sent by GITZ JOHANSEN (C. N. 271—272). Wings 183 and 172 mm resp., exposed culmen 23 and 22.5 mm resp.

16. An adult bird, unsexed, shot at Qingaq, East Greenland 17th June 1936 (C. N. 273); the skin sent by GITZ JOHANSEN. Wing 183 mm, exposed culmen 21 mm.

17. An adult female, shot at Arsuk 18th April 1939; the skin sent by 1st mate R. BANG CHRISTENSEN (C. N. 277). Wing 183 mm, exposed culmen 22.5 mm.

In the Zoological Museum the following skins originating from E. L. SCHIÖLER's collection are also kept:

18. An adult specimen in winter dress, shot at Nanortalik 27th Oct. 1899; sent by Dr. G. MELDORF. Wing 189 mm, exposed culmen 23 mm.

19. An adult bird shot at Nanortalik 13th May 1900, sent by Dr. G. MELDORF. Wing 189 mm, exposed culmen 21.5 mm.

20. A juvenile bird killed at Itivdleg near Kap Farvel about 9th Oct. 1900; sent by Dr. G. MELDORF. Wing 191 mm, exposed culmen 22 mm.

21. An adult bird in summer dress, shot in East Greenland June—July 1903. Wing 179 mm, exposed culmen 22.5 mm.

22—23. Two adult males in summer dress, shot at Nanortalik 13th May 1907; the mummies sent by Mr. JENSEN. Wings 190 mm and 188 mm resp., exposed culmen 24 mm and 22 mm resp.

24. An adult female in summer dress, shot at Nanortalik 13th May 1907; the mummy sent by Mr. JENSEN. Wing 181 mm, exposed culmen 22.5 mm.

25. An adult male shot at Julianehaab 22nd April 1909; the skin sent by Mr. JENSEN. Wing 194 mm, exposed culmen 23 mm.

26. An adult female shot at Julianehaab 4th May 1909; the skin sent by Mr. JENSEN. Wing 191 mm, exposed culmen 22.5 mm.

27. An adult female shot at Julianehaab 30th April 1909; the skin sent by Mr. JENSEN. Wing 187 mm, exposed culmen 22 mm.

28. An adult bird shot at Igaliko in the summer of 1910; the skin sent by Mr. JENSEN. Wing 179 mm, exposed culmen 22 mm.

29. An adult bird in summer dress shot at Julianehaab 10th May 1912. The skin sent by Mr. JENSEN. Wing 186 mm, exposed culmen 23 mm.

30. An adult bird in summer dress shot in Grædefjord 14th May 1899; the skin sent by Dr. TH. N. KRABBE. Wing 186 mm, exposed culmen 20 mm.

31. A young bird shot at Godthaab 12th Oct. 1903. The skin sent by Dr. TH. N. KRABBE. Wing 186 mm, exposed culmen 22 mm.

32. A young bird shot at Lichtenfels 17th Oct. 1900; the skin sent by Dr. TH. N. KRABBE. Wing 171 mm, exposed culmen 22.5 mm.

Charadrius dominicus dominicus (Müll.).

Charadrius Dominicus P. L. S. MÜLLER, Natursyst. Suppl., p. 116 (1776—St. Domingo).

The American Golden Plover.

Breeds from Point Barrow along the Arctic coast to Melville Peninsula and probably western Baffin Island north to Melville and North Devon islands and south to Ard Lake and Churchill Manitoba (CHECKLIST 1931, p. 107).

In Greenland this species has appeared a number of times in the last 100 years, being a casual visitor. The following records are known: Besides several indefinite or inexact statements from older time, skins are present from Greenland about 1841, Fiskenaes about 1846, Kangårssuk Aug. 1846, Greenland 1856, 1861, 1863 and 1872; Fiskenaes 1874, Julianehaab 1880, Hunde-Ejland June 1880, Jacobshavn 26th Sept. 1880, Frederikshaab 7th Sept. 1886, and 22nd Sept. 1889, Narssalik south of Frederikshaab 10th Sept. 1890, Ikerasak near Umanak 22nd June 1892 (H. WINGE 1898, p. 151). To these statements the following records, which refer to skins kept in the Zoological Museum, can now be added:

1. An unsexed adult bird shot at Narssalik 10th July 1901; the skin was sent to the Museum (C. N. 83) by Mr. NYEKJÆR. The wing measured 173 mm, exposed culmen 23.5 mm.

2. A young female shot at Godthaab 28th Sept. 1902; the skin was sent to the Museum (C. N. 87) by Governor KOCH. The wing measured 179 mm, exposed culmen 22 mm.

3. An adult unsexed bird in fine summer dress shot at Narssalik 10th Aug. 1904; the skin was sent to the Museum (C. N. 85) by Mr. NYEKJÆR. The wing measured 188 mm, exposed culmen 22.5 mm.

4. An unsexed adult bird was shot at Godhavn in July 1909; the skin was sent to the Museum (C. N. 117) by Dr. M. P. PORSILD. The wing measured 171 mm, exposed culmen 26 mm.

5—6. Two adult birds, unsexed, shot at Hunde-Ejland in June 1911; the skins were sent to the Museum (C. N. 118 and 119) by Dr. M. P. PORSILD. Wing measured 174 and 181 resp., exposed culmen 21 and 23 mm resp.

7. An adult unsexed bird shot in Saqaq near Ritenbenk 20th May 1921 by JØRGEN THOMSEN, who stated that two birds of the same kind were seen together, of which only the one was shot; the skin was sent to the Museum (C. N. 171) by Dr. A. BERTELSEN. The wing measured 188 mm, exposed culmen 22 mm.

8. An adult unsexed bird was shot at Nûgssuaq near Umanak by JEREMIAS BRØNDLUND 30th June 1922; only this one specimen was

seen; the skin was sent to the Museum (C. N. 170) by Dr. A. BERTELSSEN. The wing measured 185 mm, exposed culmen 21 mm.

The Zoological Museum further possesses the following specimens originating from E. L. SCHIÖLER's collection:

9. A young female shot at Sukkertoppen 26th Sept. 1901; sent by Governor L. BISTRUP. The wing measured 176 mm, exposed culmen 22 mm.

10. A young male shot at Julianehaab about 24th July 1908; sent in salted condition by Mr. JENSEN; the specimen is now a complete skeleton.

11. An adult female shot at Egedesminde 14th June 1910; sent by Dr. TH. N. KRABBE. The wing measured 185 mm, exposed culmen 23 mm.

12. An adult unsexed bird shot at Godthaab 20th Sept. 1894, sent by Dr. TH. N. KRABBE. The wing measured 185 mm, exposed culmen 22.5 mm.

13. A young bird shot in South Greenland about 1896; sent by Dr. TH. N. KRABBE. The wing measured 179 mm, exposed culmen 20.5 mm.

14. A young female shot at Frederikshaab 14th Sept. 1925, sent by Dr. V. BRUUN. The wing measured 172 mm, exposed culmen 21 mm.

15. A young male shot at Frederikshaab 16th Sept. 1925, sent in salted condition by Dr. V. BRUUN; the specimen is now a complete skeleton.

The wing measurements, which for the above mentioned skins range between 171 and 188 mm, clearly indicate that they should all be referred to the American typical form. The yellow spots on back are in none of them so big and densely arranged as in the Asiatic subspecies *Charadrius dominicus fulvus* Gml. White and black mottled under tail-coverts seem to be a character which may be present in both subspecies and are, therefore, no distinguishing mark as proposed by E. HARTERT (1915, p. 1552).

Charadrius dominicus fulvus Gml.

Charadrius fulvus GMELIN, Syst. Nat., Vol. I, part 2, p. 687 (1789—Tahiti).

The Asiatic Golden Plover.

This Plover has only once before from arctic Siberia crossed Europe and the Atlantic Ocean and reached East Greenland, viz: a young bird (after the measurements a female) captured 2nd Sept. 1928 at Cape Hope on the south-coast of Liverpool Land (A. PEDERSEN 1930, p. 456).

Now a second record is added. During a stay in Angmagssalik in East Greenland the Dutch Dr. N. TINBERGEN collected a specimen, a young bird in juvenile plumage, 1st Oct. 1932. The wing measured 163 mm, exposed culmen 22 mm. According to these small measurements it is no doubt a female. The bird is kept in the Rijksmuseum van Natuurlijke Historie in Leiden; by the courtesy of Dr. G. C. A. JUNGE the specimen was sent to F. SALOMONSEN for examination.

The Asiatic Golden Plover is unknown on the Westcoast, where the American form (*C. d. dominicus* Müll.) has been met with a few times. On the East coast the American race has not been found.

Numenius phaeopus islandicus Brehm.

Numenius Islandicus BREHM, Handb. Naturg. Vög. Deutschl., p. 610 (1831—Iceland).

The Iceland Whimbrel.

The Iceland Whimbrel is an irregular spring and summer visitor to the southern parts of East and West Greenland. Almost every year it is met with, either single birds or small flocks, usually being observed in May—June. This indicates that the Greenland visitors are spring-migrants to Iceland that have extended their migration too far or which have got a drift on account of adverse conditions of wind (“drift-migration”, cf. F. SALOMONSEN 1935 a, p. 218). During autumn-migration (Sept.—Oct.) they are much more rarely observed in Greenland, as was to be expected. Some students have suggested that they breed in the interior of the fjords of Julianehaab District; this is very likely, but there is no proof. The following records have previously been published:

Besides some few older inexact records without dates 5 skins were sent to the Zool. Museum between 1831 and 1838 from Julianehaab, Frederikshaab, Godhavn, and Umanak respectively, further Godthaab about 1841, Sydprøven May 1847, Jakobshavn about 1851, Ilua in Julianehaab District about 1856, Nanortalik about 1860, Ivigtut about 1879, Arsuk 25th May 1887, Nanortalik summer 1889, Ivigtut 25th May 1891 (flocks of 6 and 8), Holsteinsborg spring 1893, Fiskenæs June 1894, Fiskenæs July 1894, Arsuk summer 1895 (H. WINGE 1898, p. 158), Tasiussaq in Upernavik District 1st August 1883 (one heard calling its whistling note) (G. KOLTHOFF 1903, p. 49), Arsuk 22nd May 1899, Angmagssalik June 1899, 16th June 1901, 3rd June 1902, 22nd June 1902 (two specimens) (O. HELMS 1904, p. 101 and 132), Sukkertoppen 4th July 1906, 22nd June 1908, 21st July 1908, July 1908, Nanortalik early June 1906 (flocks of 5—6; sight-record), Arsuk July 1906 (sight-record), Igaliko 22nd May 1908, 24th May 1908 (two specimens) (E. L. SCHIØLER

1911, p. 77), Angmagssalik June 1908, 4th July 1907, 10th May 1913, 25th Oct. 1909 (and two undated skins) (O. HELMS 1926, p. 244), Grædefjord 15th May 1925, Godthaab 15th May 1925, Julianehaab 22nd June 1926, Fiskenæs 4th June 1927, Sarfánguaq in Holsteinsborg District 11th June 1928 (K. OLDENDOW 1933, p. 62), Angmagssalik 28th May 1935 (F. SALOMONSEN 1935 b, p. 112).

The Greenland specimens of the Whimbrel belong to the Iceland race (*N. p. islandicus* Brehm), which is slightly larger than the Scandinavian one; cf. the measurements in F. SALOMONSEN 1935 b, p. 113.

The following new records have to be added:

1—3. Three specimens were shot at Qagssiarssuk at the Tunugdliarfikfjord in Julianehaab District 1934, one was labelled 28th June 1934, the others without exact date, but probably secured in June too. They were by Dr. LAURENT CHRISTENSEN presented to F. SALOMONSEN, who forwarded them to the Zoological Museum. The measurements are: wing 245 (labelled ♂), 245, 266 mm; exposed culmen (measured in a straight line) 90, 87 mm; in the third specimen the bill was broken. The Greenlanders believe that the Whimbrel breeds at Qagssiarssuk, and there are good reasons to believe this is so.

4. A specimen was shot at Igdlukasik in Julianehaab District July 1937. It was by Dr. LAURENT CHRISTENSEN presented to F. SALOMONSEN who forwarded it to the Zoological Museum. The measurements are: wing 255 mm, exposed culmen 81 mm.

5. A specimen shot at Angmagssalik May 1937 was by Governor RASSOW sent to Director K. OLDENDOW who presented it to F. SALOMONSEN. It is now in the Zoological Museum. Measurements: wing 259 mm, exposed culmen 86 mm.

6. A specimen was shot at Egedesminde Oct. 1934. The wings were presented by Mr. H. FENCKER to F. SALOMONSEN. They are now in the Zoological Museum; they measure 240 mm.

7. An adult shot at Julianehaab. The skin sent to the Zoological Museum (C. N. 56) in 1903 by Governor BAUMANN. Wing 245 mm, exposed culmen 73 mm.

8. An adult male shot at Jacobshavn 2nd July 1889 by P. MÜLLER, the skin sent to the Zoological Museum (C. N. 55) by Governor R. MÜLLER. Wing 244 mm, exposed culmen 81 mm.

9. An adult male shot at Ivigtut 1904; the skin presented to the Zoological Museum (C. N. 57) by Dr. O. HELMS. Wing 248 mm, exposed culmen 80 mm.

10. An adult shot at Godhavn, Disco 4th June 1912. The skin sent to the Zoological Museum (C. N. 72) by Dr. M. P. PORSILD. Wing 253 mm, exposed culmen 83 mm.

11. An adult was shot at Godthaab 5th May 1906 and the skin sent to the Zoological Museum (C. N. 66) by Dr. TH. N. KRABBE. Wing 248 mm, exposed culmen 84 mm.

12. An adult male was shot at Sarfánguaq at Godthaab 10th June 1880. The skin was sent to K. ANDERSEN, with whose collection it was incorporated in the Zoological Museum (C. N. 65). Wing 244 mm, exposed culmen 67 mm.

13. An adult male was shot at Qaersuarssuk 18th June 1921; "it was killed in a swampy area in the country". The skin was presented to the Zoological Museum (C. N. 101) by Dr. A. BERTELSEN. Wing 251 mm, exposed culmen 75 mm.

14. An adult was shot at Sukkertoppen 4th June 1924 by W. PETERSEN, who presented the skin to the Zoological Museum (C. N. 105); it had been in company with another bird of the same species. Wing 252 mm, exposed culmen 81 mm.

15. An adult female was shot at Kronprinsens Eiland 23rd June 1913. The skeleton was presented to the Zoological Museum (C. N. 67) by Dr. LAUGE KOCH.

16. An adult shot at Frederikshaab in the summer of 1895; the skin was incorporated in the collection of the Zoological Museum (C. N. 64) together with K. ANDERSEN'S collection. Wing 260 mm, exposed culmen 89 mm.

17—18. Two adult birds shot at Sukkertoppen July 1932; the skins were sold to the Zoological Museum (C. N. 130, 131) by N. L. NIELSEN. Wings 245 and 247 mm, exposed culmen 85 and 77 mm resp.

19. An adult female was captured in the sea SE of Kap Farvel, 58°15' n. lat., 38°20' w. long., 30th May 1937. The skin was presented to the Zoological Museum (C. N. 133) by 1st mate R. BANG CHRISTENSEN. Wing 272 mm, exposed culmen 93 mm.

E. L. SCHIØLER'S collection, which is incorporated in the Zoological Museum, contains the following skins from Greenland of this species not previously mentioned.

20. An adult from Utorqarmiut 19th May 1894; sent by Dr. TH. N. KRABBE. Wing 246 mm, culmen 83 mm.

21. An adult from Godthaab 2nd June 1894; sent by Dr. TH. N. KRABBE. Wing 250 mm, culmen 87 mm.

22. An adult from Godthaab 2nd June 1894; sent by Dr. TH. N. KRABBE. Wing 239 mm, culmen 76 mm.

23. An adult from Godthaab 26th June 1895; sent by Dr. TH. N. KRABBE. Wing 256 mm, culmen 87 mm.

24. An adult from Sukkertoppen 7th May 1899; sent by Dr. TH. N. KRABBE. Wing 260 mm, culmen 94 mm.

25. An adult from Holsteinsborg 27th May 1899; sent by TH. N. KRABBE. Wing 253 mm, culmen 81 mm.

26. An adult from Nanortalik 11th May 1900; sent by Dr. G. MELDORF. Wing 254 mm, culmen 92 mm.

27. An adult from Nanortalik 10th May 1900; sent by Dr. G. MELDORF. Wing 252, culmen 75 mm.

28. An adult from Nanortalik 29th May 1901, "shot out of a flock of six"; sent by Dr. G. MELDORF. Wing 249 mm, culmen 79 mm.

29. An adult from Narssaq at Godthaab 18th June 1903; sent by Dr. TH. N. KRABBE. Wing 245 mm, culmen 84 mm.

30. An adult from "Eastgreenland" 1903. Wing 261 mm, culmen 80 mm.

31. An adult from Godthaab 25th June 1903; sent by Dr. TH. N. KRABBE. Wing 267 mm, culmen 85 mm.

32. An adult from Fiskenæs 25th May 1905; sent by Dr. TH. N. KRABBE. Wing 248 mm, culmen 84 mm.

33. An adult female from Julianehaab spring 1906; sent by Dr. H. DEICHMANN. Wing 249 mm, culmen 93 mm.

34. An adult from Godthaab 25th June 1906; sent by Dr. TH. N. KRABBE. Wing 249 mm, culmen 79 mm.

35. An adult from "Greenland", about 1910; sent by Dr. TH. N. KRABBE. Wing 246 mm, culmen 77 mm.

36. An adult from Ameralikfjord 15th May 1910; sent by TH. N. KRABBE. Wing 257 mm, culmen 82 mm.

37. An adult from Julianehaab, beginning of October 1913; sent by TH. N. KRABBE. Wing 260 mm, culmen 86 mm.

38. An adult male from Sukkertoppen 12th June 1920; sent by TH. N. KRABBE. Wing 246 mm, culmen 78 mm.

These 38 records were nearly all made in May to June, two in July, and two in October; according to the above it seems to be only adult, sexually mature birds which stray to Greenland.

Numenius phaeopus hudsonicus Latham.

Numenius hudsonicus LATHAM, Index Orn., Vol. II, p. 712 (1790—Hudson Bay).

The Hudsonian Curlew.

The Hudsonian Curlew which was previously considered a distinct species, is now regarded as a subspecies of *Numenius phaeopus* (cf. J. L. PETERS 1934, p. 261).

Breeds on the Arctic coast of North America from Norton Sound to the Anderson River, and locally to Fort Churchill (PETERS *l. c.*).

The species has been observed a few times in South and North Greenland, being recorded from Jakobshavn, Godthaab, Fiskenaes, and Julianehaab, as also from Egedesminde in June 1879 (H. WINGE 1898, p. 159).

To the above 2 new records can now be added:

1. A juvenile specimen, not sexed, was shot at Godthaab 29th August 1893; the skin was presented to the Zoological Museum (C. N. 2) by Dr. TH. N. KRABBE. Wing 235 mm, exposed culmen 65 mm.

2. A juvenile specimen, not sexed, was shot early in the summer of 1932 at Robertson Bay, Thule District. The skin was presented to the Zoological Museum (C. N. 4) by Dr. A. BERTELSEN. Wing 249 mm, exposed culmen 70 mm.

***Tringa flavipes* (Gml.).**

Scolopax flavipes GMELIN, Syst. Nat., Vol. I, part 2, p. 659 (1789—New York).

The Lesser Yellow-legs.

This Limicole breeds throughout northern America from Kotzebue Sound and the upper Yukon Valley, Alaska, northern Mackenzie, northern Manitoba, and northern Quebec to northern British Columbia, Alberta, and southern Manitoba (CHECK-LIST 1931, p. 117), and has occurred a single time in West Greenland, *viz*: a juv. from Nanortalik at the end of last century.

To this record the following new occurrence can now be added:

An adult male was shot at Godthaab 16th Aug. 1916; the skin was presented to the Zoological Museum (C. N. 2) by Mr. O. BENDIXEN. Wing measured 156 mm, exposed culmen 34 mm, Tarsus 50 mm.

***Tringa melanoleuca* (Gml.).**

Scolopax melanoleuca GMELIN, Syst. Nat., Vol. I, part 2, p. 659 (1789—Labrador).

The Greater Yellow-legs.

Breeds from Mt. Iliamna, Alaska, Central Alberta, southern Ungava, and Labrador to southern British Columbia, southern Manitoba, Newfoundland, Mingan and Anticosti islands (CHECK-LIST 1931, p. 116).

An adult male was shot at a little lake at Thule 29th July 1917 and sent as a mummy to the Zoological Museum (C. N. 1) by P. FREUCHEN, who stated that only this specimen was observed; it stayed in this place for about a fortnight, sitting the whole time on the stones in the lake,

and constantly uttering very piercing cries. Wing 197 mm, culmen 56 mm, tarsus 70 mm.

The specimen mentioned above is the first and only one known from Greenland; it has been met with a few times in the British Isles.

Tringa macularia L.

Tringa macularia LINNAEUS, Syst. Nat., Ed. XII, Vol. I, p. 249 (1766—Pennsylvania).

The Spotted Sandpiper.

This bird which in North America extends its breeding area up to the timber-line from Alaska to Newfoundland and southwards to Arizona and northern South Carolina has appeared as accidental visitor to Europe a few times. In Greenland it has not been met with before. Now two records are available, *viz*:

1. An adult bird, unsexed, was captured at Tuapait near Nanortalik 18th April 1901; the skin was secured by Dr. G. MELDORF, whose widow presented it to the Zoological Museum (C. N. 2). The wing measured 104 mm, exposed culmen 24 mm.

2. A juvenile bird, unsexed, was shot at Sârdloq near Godthaab 27th Sept. 1902. According to information received from Governor KOCH, who presented the skin to the Zoological Museum (C. N. 1), the bird had appeared at Sârdloq in the summer, and had been hit, its left leg being injured; later on it was seen now and then, until it was killed in September. The wing measured 105 mm, exposed culmen 24 mm.

Recurvirostra avosetta americana Gml.

Recurvirostra americana GMELIN, Syst. Nat., Vol. I, part 2, p. 693 (1789—North America).

The American Avocet.

The occurrence of the American Avocet in Greenland is quite extraordinary. A specimen in winter-dress, probably a bird in first winter, was shot at Kin-of-Sal in Sukkertoppen District 2nd Nov. 1937. The bird was bought by Mr. KARL HEILMANN, who presented it to the seminary in Godthaab, where it is kept now. By the courtesy of Director K. OLDENDOW of "Grønlands Styrelse" and the leader of Godthaab seminary the specimen was sent to F. SALOMONSEN for examination. Referring to the photo (Fig. 1) of the bird the following description may be given: Head and neck uniform greyish without the blackish-brown fore-head, crown and upper-parts of neck of the European subspecies (*R. a. avosetta* L.). It is probably a young bird in first winter as the tips of the inner primaries are supplied with a whitish edge lacking

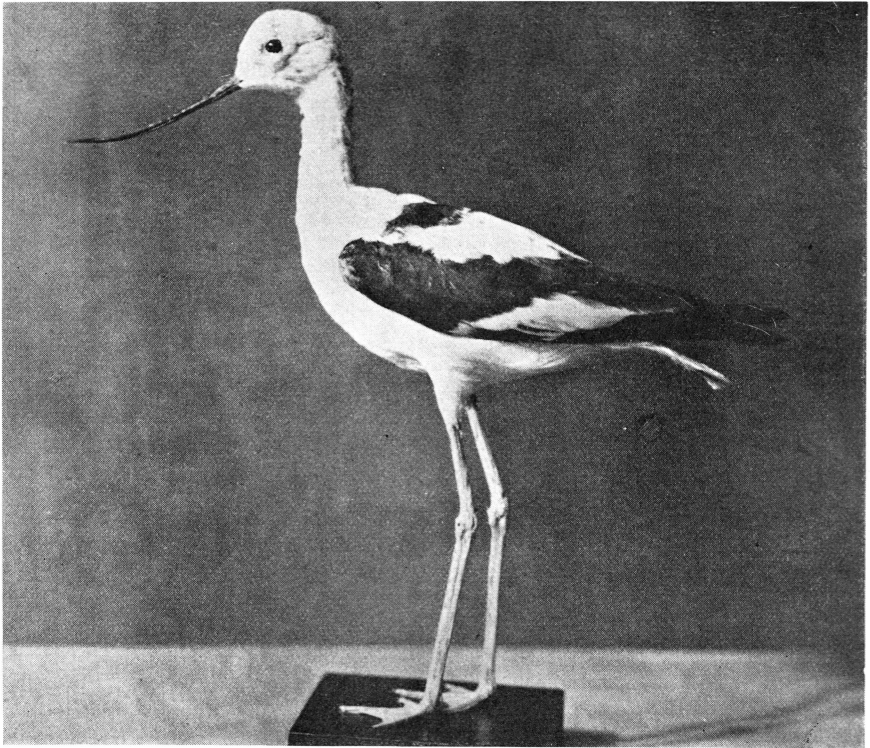


Fig. 1. *Recurvirostra avosetta americana* Gml., Kin-of-Sal, Sukkertoppen District, 2nd Nov. 1937, in winter-dress, probably a bird in first winter. The specimen belongs to the bird-collection of the Godthaab seminary. First Greenland record.

in the adult specimens used for comparison. The wing measured 223 mm, exposed culmen (measured in a straight line from feathers to tip) 86 mm, tarsus 92 mm, middle-toe 45 mm.

The American Avocet breeds in the temperate parts of North America, northwards to eastern Washington, southern Alberta (formerly to Great Slave Lake) and southern Manitoba, and winters in Middle America. It is casually found north to British Columbia, Ontario and New Brunswick (CHECK-LIST etc. 1931, p. 126). The Greenland record, therefore, means a remarkable extension to the north of the occurrence of this bird.

***Calidris melanotos* (Vieill.).**

Tringa melanotos VIEILLOT, Nouv. Dict. d'Hist. Nat., nouv. Ed., Vol. XXXIV, p. 462 (1819—Paraguay).

The Pectoral Sandpiper.

Distributed as a breeding-bird on the arctic coasts from northeastern Siberia to northern Alaska, northeastern Mackenzie to Southampton

Island; it has appeared now and then as an accidental visitor to West Greenland, *viz*: a female from Godthaab about 1851, two specimens from Nanortalik about 1860, Frederikshaab about 1886, Upernivik 18th June 1888, Narssalik north of Arsuk 21st Sept. 1889, two specimens from Nanortalik in the latter part of the last century (H. WINGE 1898, p. 163), and a young bird from Sukkertoppen Sept. 1907 (E. L. SCHIÖLER 1912, p. 78).

To these the following records can be added:

1. A specimen was shot at Fiskenes 19th Sept. 1902; the skin was presented to the Zoological Museum (C. N. 7) by Dr. TH. N. KRABBE. The wing measured 120 mm, exposed culmen 26 mm.

2. A specimen was shot at Narssalik 17th Sept. 1904; the skin was presented to the Zoological Museum (C. N. 6) by Mr. NYEKJÆR. The wing measured 123 mm, exposed culmen 26 mm.

3. A specimen, unsexed, was shot at Frederikshaab 15th Sept. 1896; Dr. TH. N. KRABBE handed over the skin to SCHIÖLER, with whose collection it came to the Zoological Museum (C. N. 12). The wing measured 124 mm, exposed culmen 23 mm.

***Calidris fuscicollis* (Vieill.).**

Tringa fuscicollis VIEILLOT, Nouv. Dict. d'Hist. Nat., nouv. Ed., Vol. XXXIV, p. 461 (1819—Paraguay).

The White-rumped Sandpiper.

This North-American species breeds along the Arctic coast from northern Alaska and Mackenzie to Southampton and southern Baffin islands (CHECK-LIST 1931, p. 119); it has strayed to England, and several specimens have been shot in Greenland, *viz*: besides several older inexacte or indefinite records, Nanortalik 1835 and 1840, Nanortalik 7th and 8th Sept. 1840, Augpalârtoq north of Upernivik June 1885, Tasiussaq north of Upernavik 18th Sept. 1886; it has been suggested that it may have bred in the vicinity of Julianehaab, where small flocks of young and old birds were seen in some years (H. WINGE 1898, p. 163), but these records have never been verified; later a male was shot at Nanortalik near Julianehaab 7th June 1909 (E. L. SCHIÖLER 1912, p. 78).

To these can now be added the following records:

1. A juvenile bird was shot at Frederikshaab 2nd Oct. 1895; the skin was presented to the Zoological Museum (C. N. 4) by Dr. TH. N. KRABBE. The wing measured 124 mm, exposed culmen 22.5 mm.

2. A juvenile bird was shot at Frederikshaab in the autumn of

1896; the skin was presented to the Zoological Museum (C. N. 2) by Dr. TH. N. KRABBE. The wing measured 117 mm, exposed culmen 23 mm.

3. A juvenile bird was shot at Nyherrnhut near Godthaab 17th Sept. 1897; the skin was presented to the Zoological Museum (C. N. 3) by Dr. TH. N. KRABBE. The wing measured 122 mm, exposed culmen?

4. A juvenile bird was shot at Nanortalik in Sept. 1899. Rev. ISAK LUND handed over the skin to Dr. G. MELDORF, whose widow gave it to the Zoological Museum (C. N. 14). The wing measured 119 mm, exposed culmen 21 mm.

5. An adult bird, unsexed, was shot at Ikerasak near Umanak 10th June 1922 by Mr. FREDERIK FLEISCHER; it was alone and very shy; the skin was presented to the Zoological Museum (C. N. 7) by Dr. A. BERTELSEN. The wing measured 127 mm, exposed culmen 25 mm.

SCHIÖLER's collection (now in the Zoological Museum) contains the following skins:

6. A juvenile bird was shot at Godthaab 28th Sept. 1893; the skin was sent to SCHIÖLER (C. N. 8) by Dr. TH. N. KRABBE. The wing measured 121 mm, exposed culmen 23 mm.

7. A juvenile bird was shot at Napassog near Sukkertoppen 6th Sept. 1896 (C. N. 9). The wing measured 120 mm, exposed culmen 23 mm.

8. A juvenile bird was shot at Frederikshaab 15th Sept. 1896 (C. N. 10). The wing measured 121 mm, exposed culmen 23.5 mm.

9. A juvenile bird was shot at Frederikshaab 19th Sept. 1896 (C. N. 11). The wing measured 120 mm, exposed culmen 22 mm.

10. A juvenile specimen was shot at Frederikshaab 5th Oct. 1896 (C. N. 12). The wing measured 116 mm, exposed culmen 25 mm.

***Calidris alpina schinzii* (Brehm).**

Pelidna Schinzii BREHM, Beitr. z. Vögelkunde, Vol. III, p. 355 (1822—Baltic coasts).

The Dunlin.

While the subspecies *Calidris alpina arctica* (Schiøler) is a common breeding bird on the northeastern coast of Greenland, probably down to the Kap Dalton region, *C. alpina schinzii* has been found breeding in the Angmagssalik district¹). The subspecies is not known to breed on the west coast of Greenland, where it has been seen a few times; two skins were sent to the Museum in 1843, besides a few indefinite records,

¹) The breeding-birds of the Faroes, Iceland and Southeast Greenland are intermediate between *C. a. schinzii* (Brehm) and *C. a. alpina* (L.), but coming nearest to *schinzii*. They have been separated as a subspecies (*C. a. islandica*) by SCHIÖLER, but this form cannot be recognized.

and a bird in full summer plumage was shot at Ivigtut 30th May 1890 (H. WINGE 1898, p. 170), but none of these skins exist now; E. L. SCHIØLER (1926, p. 46) considers it most probable that they belonged to the American-Siberian subspecies *C. a. sakhalina* (Vieill.).

The Zoological Museum now possesses two skins from West Greenland, *viz*:

1. An adult (unsexed) bird was shot at Nanortalik 6th May 1900 and by Miss LÜTZEN presented to Dr. G. MELDORF, whose widow handed it over to the Museum (C. N. 645). The wing measured 114 mm, exposed culmen 28.5 mm. According to these measurements it cannot be a *C. a. sakhalina* which has far greater dimensions. Therefore, only *C. a. arctica* and *C. a. schinzii* can be involved; the feathers on back and shoulders are however of so warm red-brown colour that it cannot be *C. a. arctica*, and this specimen must therefore be referred to *C. alpina schinzii*.

2. An adult bird, unsexed, was shot at a mountain lake by CARL ABRAHAMSEN at Ikerasak near Umanak 12th June 1926; the mummy was presented to the Museum (C. N. 363) by Dr. A. BERTELSEN; unfortunately, the specimen was later much ravaged by moths. The wing measured 112 mm, exposed culmen 30 mm. This specimen too should be referred either to the Atlantic or Northeast Greenland subspecies; the warm red-brown colour of the feathers left on back and shoulders indicate that this specimen should be referred to *C. a. schinzii*. The length of wing and bill does not afford any support for a racial identification, since the length of the bill, 30 mm, is just at the point of overlapping of the subspecies.

According to the above *C. a. sakhalina* has not been demonstrated in Greenland.

***Calidris bairdi* (Coues).**

Actodromas Bairdii COUES, Proc. Acad. Nat. Sci. Philadelphia, Vol. XIII, p. 194 (1861—Great Slave Lake).

Baird's Sandpiper.

Breeds along the arctic coasts from western Alaska to Baffin Island.

From the west coast of Greenland the following records are now available:

1. A juvenile bird was shot at Fiskenes 14th Sept. 1902; the skin was presented to the Zoological Museum (C. N. 1) by Dr. TH. N. KRABBE. The wing measured 122 mm, exposed culmen 22 mm, Tarsus 21.5 mm.

2. An adult male was killed in North Star Bay near Cap York 24th July 1915; together with its 4 small nestlings it was sent to the Zoological Museum (C. N. 2 and C. N. 3—6) by P. FREUCHEN. The wing

measured 125 mm, exposed culmen 22 mm, Tarsus 22.5 mm. These records proves that this species which is new to Greenland breeds in the northern part of the west coast.

Capella gallinago delicata (Ord.).

Scolopax delicata ORD, ed. Wilson's Amer. Ornith., Vol. IX, p. CCXVIII (1825—Pennsylvania).

Wilson's Snipe.

Three races of the Common Snipe occur as rare visitors in Greenland, viz. *C. g. gallinago* (L.), *C. g. faeroeensis* (Brehm) and *C. g. delicata* (Ord), but the racial determination of the Greenland skins has not in all cases been properly worked out. Below follows a treatment of the specimens in the Zoological Museum which have not been examined before. The American race, *C. g. delicata*, is previously known with certainty to have occurred the following times in Greenland: Nugsuak Pen. spring 1877, *ibid.* July 1891 (H. WINGE 1898, p. 176), and besides one of the 8 specimens secured at Angmagssalik "seems to be of the North American race" (O. HELMS 1926, p. 249). To these records the following ones should be added:

1. A specimen was shot at the settlement Nûk in the southernmost part of Julianehaab District July 1937 and by Dr. LAURENT CHRISTENSEN sent to Director K. OLDENDOW, who presented it to the bird-collection in the seminary in Godthaab, where it is kept now. By the courtesy of Director OLDENDOW the bird was sent to FINN SALOMONSEN for examination. The specimen, which is shown Fig. 2, is a typical *C. g. delicata*. The sides of breast and flanks are broadly barred with dusky, the axillaries and proximal under wing-coverts are broadly and regularly barred with dusky, the dark bars being decidedly broader than the white ones, in *C. g. gallinago* being as broad as or (usually) narrower than the white ones; 16 rectrices, the lateral pair being somewhat narrower than in *C. g. gallinago*; greater and median upper wing-coverts supplied with large white apical spots, pectoral region heavily marked with black and buff; bill rather short (60 mm, as against 64—74 mm in *C. g. gallinago*). Measurements: wing 134 mm, exposed culmen 60 mm, tarsus 32 mm, middle-toe 35 mm.

2. A specimen shot at Angmagssalik 29th May 1902 is mentioned by O. HELMS (1904, p. 104) and by him referred to *Gallinago scolopacina* Bon. *typica*; the skin es kept in the Zoological Museum of Copenhagen (C. N. 16); as the axillaries have very broad black cross bars, broader than the white intervals, and as the wing coverts are strongly white-



Fig. 2. *Capella gallinago delicata* (Ord), Nùk, Julianehaab District, July 1937. The specimen belongs to the bird-collection of the Godthaab seminary.

spotted and the number of rectrices is 16, the specimen should no doubt be referred to the subspecies *C. g. delicata*. Wing 143 mm, exposed culmen 63 mm.

3. A specimen was shot at Angmagssalik 4th May 1936 by Mr. GITZ JOHANSEN, who presented the skin to the Zoological Museum (C. N. 182). The black bars on the axillaries are much broader than the white intervals, the upper wing coverts are extensively white-spotted, and the number of rectrices is 16; the bird, therefore, no doubt is referable to the American subspecies. Wing 130 mm, exposed culmen 66 mm.

4. A specimen marked Angmagssalik 1908 (C. N. 14) is kept in the Zoological Museum of Copenhagen. Probably, it is this skin to which HELMS refers (1926, p. 248) when stating that among the 8 skins sent to him by JOHAN PETERSEN, he found one which he referred to *C. g. delicata*; as he does not give any specification it is mentioned here that the white-spotted wing coverts and broad dark cross bars on the axillaries refer it to *C. g. delicata*. Rectrices are partly lacking. Wing 130 mm, exposed culmen 64.

5. In SCHIÖLER's handwritten catalogue of his collection he lists a skin of *C. g. delicata* shot in June 1924 in Upernivik and sent to him by

Dr. S. M. SAXTORPH. It has not been possible to find this skin in his collection, which has been incorporated in the Zoological Museum.

Finally, it should be noted that the following two skins kept in the Zoological Museum which H. WINGE (1898, p. 176) referred to the "European" subspecies, on basis of the present much better collection available for comparison, should probably be referred to *C. g. delicata*; these two skins are: a) a specimen from Nanortalik shot 6th Sept. 1840 and sent by KIELSEN (C. N. 45). The axillaries have broad dark cross bars with narrow intervals, wing coverts white-spotted, rectrices 13 (defective), and b) a specimen from Fiskenæs, shot in October 1845 and sent by HOLBØLL (C. N. 44). Wing coverts and axillaries as in the above specimen, rectrices 15 (defective).

Capella gallinago faeroensis (Brehm).

Telmatias Faeroensis BREHM, Handb. Naturg. Vög. Deutschlands, p. 617 (1831—Faroës).

The Faroe Snipe.

This subspecies which breeds on the Faroes and Iceland has appeared a number of times on the east coast of Greenland, at Angmagssalik. It was recorded from these places by O. HELMS (1926, p. 248); of the eight skins which he received from JOHAN PETERSEN of Angmagssalik belonging to the species *C. gallinago*, he refers five to *C. g. faeroensis*, without specifying which of the skins he meant. Since six of these skins are now kept in the Zoological Museum, and as three of these should probably be referred to *C. g. faeroensis*, detailed particulars of these are stated below.

1. Skin labelled Angmagssalik April or May 1913 (C. N. 47) has narrow dark cross bars on the axillaries, no conspicuous white spots on the wing coverts and 14 rectrices; as the spots on fore-breast are rather indistinct and the red brown colours fairly predominant (although the feathers are somewhat faded), this specimen should presumably be referred to the Faroe form. The wing length is 123 mm, exposed culmen 64 mm.

2. Skin labelled Angmagssalik April or May 1913 (C. N. 46) should, for the same reasons as above, be referred to *C. g. faeroensis*. Wing length 129 mm, culmen 66 mm.

In all probability it must be these two skins to which O. HELMS (1917, p. 173) refers when stating that he received from JOHAN PETERSEN two skins of *Gallinago scolopacina typica*, one shot 30th April the other 15th May 1913; unfortunately, the labels have been mixed up and abbreviated. In his work on the birds of Angmagssalik HELMS (O. HELMS

1926, p. 248) again mentions these two skins, but does not state to which subspecies he refers them; according to the evidence we have it must be supposed that at that time he referred them correctly to *C. gallinago faeroeensis*.

3. Skin marked: Angmagssalik 25th May 1905 (C. N. 17) fairly agrees with the above mentioned skin. Wing length 133 mm, exposed culmen 68 mm.

Capella gallinago gallinago (L.).

Scolopax gallinago LINNAEUS, Syst. Nat., Ed. X, Vol. I, p. 147 (1758—Europe; type-locality restricted to Sweden).

The European Snipe.

From East Greenland this species was first mentioned by HELMS (O. HELMS and E. L. SCHIÖLER 1917, p. 173) who records 2 specimens of *Gallinago gallinago* BONAP. *typica* sent by JOHAN PETERSEN of Angmagssalik; these two skins should now be referred to the subspecies *C. g. faeroeensis*, to which reference is made above. This subspecies, which breeds in England, North Europe, and Siberia, was first mentioned from Greenland by H. WINGE (1898, p. 176); the two skins recorded by him should however reasonably be referred to *Capella g. delicata*, to which reference is made above. O. HELMS (1926, p. 248) states that of the eight skins of *Capella gallinago* available from Angmagssalik two should be referred to the typical form; he is however not able to tell exactly to which skins he refers. In the Zoological Museum six skins are now kept, sent by JOHAN PETERSEN from Angmagssalik to HELMS; of these the two following are referable to *C. g. gallinago*.

a) A specimen labelled Angmagssalik 1908 (C. N. 15) has fairly broad dark cross bands on the axillaries, which are however smaller than the white intervals, 14 rectrices and no conspicuous white spots on the wing coverts; as regards the distinct dark spots on fore-breast and the moderate extent of the red-brown colour it agrees with *C. g. gallinago*. Wing length 129 mm, culmen 67 mm.

b) A specimen labelled Angmagssalik 5th Oct. 1923 (C. N. 146) has very narrow dark cross bands on axillaries, wing coverts without conspicuous white spots and 14 rectrices. As this skin too has the redbrown colour on back and fore-neck only little conspicuous and distinct black spots on the fore-neck, it is referable to the typical form. Wing length 131 mm, culmen 65 mm. Finally A. PEDERSEN (1930, p. 464) records a specimen shot 26th May 1929 in Rosenvinge's Bugt in Scoresby Sund¹).

¹) Further, a snipe was seen and another was shot at Angmagssalik 21st May 1931 but nothing is recorded about the racial status of these specimens (F. S. CHAPMAN 1932, p. 495).

To this can be added a record not hitherto known, *viz.* a specimen shot at Fiskenæs in the middle of October 1897. Wing length 136 mm, exposed culmen 63 mm. The black cross bars on the axillaries are a little narrower than the intervals, wing coverts without conspicuous white spots, rectrices 14; by its distinct dark spots on the fore-neck it is fairly well distinguished from *C. g. faeroensis*. The skin was handed over to the Zoological Museum (C. N. 18) by Dr. TH. N. KRABBE.

Xema sabini (Sabine).

Larus Sabini SABINE, Trans. Linn. Soc. London, Vol. XII, p. 522, pl. 29 (1818—Sabine Islands, Northwest Greenland).

Sabine's Gull.

Sabine's Gull breeds in the northern part of both East and West Greenland, and perhaps it should not be enumerated among the rare guests of Greenland, as it is probably a regular passage-migrant to South Greenland. Since it has, however, been met with only accidentally in the southern parts of the country every new record is of interest. The following records from South Greenland (from Sukkertoppen¹) and southwards in West Greenland; no records from Southeast Greenland) are published: Godthaab juv. 11th Sept. 1885, *ibid.* juv. 1887, Sydprøven in Julianehaab District juv. Sept. 1889 (H. WINGE 1898, p. 199), Qagssimiut in Julianehaab Distr. juv. autumn 1899, Arsukfjord autumn 1899 (O. HELMS 1904, p. 133), Narssaq in Godthaab District ♂ juv. 13th Aug. 1925, Sukkertoppen juv. Sept. 1926, Godthaabsfjorden juv. 25th Sept. 1926, Qôrnoq in Godthaab District ♂ ad. 25th July 1926, Godthaabsfjorden ♀ ad. 26th May 1927, Godthaab ♂ juv. 21st Aug. 1928, Agpamiut in Sukkertoppen District ♀ ad. 1st June 1930, Godthaabsfjorden ♀ juv. 22nd Oct. 1931 (K. OLDENDOW 1933, p. 87)².

The following records are new:

1. A young bird in juvenile plumage shot at Augpilagtoq in the southernmost part of Julianehaab District 31st Aug. 1937 and by Dr. LAURENT CHRISTENSEN sent to FINN SALOMONSEN; it is now in the Zoological Museum. This is the first record so far south in Greenland.
2. A young bird shot at Frederikshaab 5th Sept. 1901, sent to the Zoological Museum by Governor BAUMANN (C. N. 9).
3. A young female shot at Godthaab 7th Sept. 1898. Sent to the Zoological Museum by H. STEPHENSEN (C. N. 37).

¹) From Disko Bay and northwards Sabine's Gull is a regular but infrequent passage-migrant.

²) Some of the specimens in OLDENDOW's collection are already mentioned by H. SCHEEL (1927, p. 80), but the dates given for the capture are unfortunately not correct in some cases.

4. A young bird shot at Godthaab 27th Sept. 1926. Sent to the Zoological Museum by JOHN MØLLER (C. N. 38).

5. A female shot at Satsigsut, Godthaab 18th June 1932. Sent to the Zoological Museum by JOHN MØLLER (C. N. 50).

6. A young bird shot at Julianehaab 1933. Sent to the Zoological Museum by JACOB OLSEN (C. N. 52).

7. A young bird shot at Godthaab 17th Sept. 1893. Like Nos. 8—11 it is collected by Dr. TH. N. KRABBE, who gave the skin to E. L. SCHIØLER, whose collection is now kept in the Zoological Museum.

8. A young female shot at Godthaab 11th Oct. 1905 and by TH. N. KRABBE sent to the Zoological Museum.

9. A young male shot at Godthaab 22nd Aug. 1905 and by TH. N. KRABBE sent to the Zoological Museum.

10. A young bird shot at Godthaab 24th Aug. 1900 and by TH. N. KRABBE sent to the Zoological Museum.

11. A young bird shot at Godthaab 20th Sept. 1893 and by TH. N. KRABBE sent to the Zoological Museum.

12—13. Two young birds shot at Sukkertoppen 28th Aug. 1924. By Dr. Å. V. TÅNING sent to E. L. SCHIØLER with whose collection it came to the Zoological Museum.

Larus minutus Pall.

Larus minutus PALLAS, Reise Russ. Reichs, Vol. III, p. 702 (1776—Berezof, Tobolsk, Siberia).

The Little Gull.

The Little Gull, which has its nearest breeding-places in North Europe and in northern Russia and Siberia, has strayed to Greenland a few times. A ♀ juv. was shot at Kapisilik in Godthaabsfjord 25th April 1929 (K. OLDENDOW 1933, p. 75). To this the following record can be added:

A juvenile male was shot at Napassoq near Godthaab 15th June 1932; the bird was skinned by the taxidermist JOHN MØLLER and sent to the Zoological Museum (C. N. 34). OLDENDOW (*l. c.*) mentions this record without being able to state the date of capture, sex and age of the bird. The wing measured 219 mm, exposed culmen 24 mm.

Larus ridibundus ridibundus L.

Larus ridibundus LINNAEUS, Syst. Nat., Ed. XII, Vol. I, p. 225 (1766—Europe; type-locality restricted to England).

The Black-headed Gull.

This species breeds in southern Scandinavia through Central Europe to Southern France, North Italy, and the Danube countries; in Russia

to Perm and Wologda; it also breeds in the British Isles and the Faroes, and in this century it has begun spreading to Iceland.

From Greenland hitherto only three accidental records are known, viz. ♀ ad. observed 14th June 1883 off the south coast of Greenland (G. KOLTHOFF 1903, p. 69), ♀ ad. shot at Fiskenæs 29th January 1917 (O. HELMS and E. L. SCHIØLER 1917, p. 175) and a juvenile shot at Frederiksdal, Nanortalik District in the autumn of 1929 (K. OLDENDOW 1933, p. 75).

To these the following new records can now be added:

1. An adult female was shot at Fiskenæs 2nd February 1917 and by MOTZFELDT sent to Dr. TH. N. KRABBE, who presented the skin to the Zoological Museum (C. N. 78). Wing 305 mm, exposed culmen 31.5 mm.

2. A young bird in its first winter plumage was shot off the settlement Tuapait, at the entrance of the Tasermiut Fjord at Nanortalik on 6th November 1933 by LEIF HAGENSEN, who presented the skin to the Zoological Museum (C. N. 152) through Dr. A. BERTELSEN. Wing 278 mm, culmen 30 mm.

3. A young bird in its first winter plumage was shot at Fiskenæs in the summer of 1932. Head, wings and legs were sent to the Zoological Museum (C. N. 153) by JOHN MØLLER. Wing 292 mm, exposed culmen 32.5 mm.

Larus canus canus L.

Larus canus LINNAEUS, Syst. Nat., Ed. X, Vol. I, p. 136 (1758—Europe; type-locality restricted to Sweden).

The Common Gull.

The Common Gull breeds in Ireland, Scotland, and North Europe, down to Holland and the Baltic Countries, right to Yenisei in Siberia. It has spread westwards and since 1890 breeds on the Faroes, having now and then appeared in Iceland and once in Labrador. Previously it was not known from Greenland; now there are three records from there.

1. An adult specimen was shot at Fiskenæs in the summer of 1892; the skin was presented to the Zoological Museum (C. N. 43) by Dr. TH. N. KRABBE. Wing measured 367 mm, exposed culmen 39 mm.

2. A juvenile specimen, not sexed, with 1st winter plumage appearing, was shot 27th Oct. 1895 at Narssaq near Godthaab. The skin was presented to the Zoological Museum (C. N. 42) by Dr. TH. N. KRABBE. Wing measured 368 mm, exposed culmen 34 mm.

3. A juvenile specimen, not sexed, in the transition from juvenile to first winter plumage, was shot at Narssaq near Godthaab 6th Dec.

1904; the skin was presented to the Zoological Museum of Copenhagen (C. N. 75) by Dr. TH. N. KRABBE. Wing measured 333 mm, exposed culmen 33 mm.

According to the measurements Nos. 1 and 2 should no doubt be referred to *L. canus canus*; also according to the coloration of the primaries the adult bird (No. 1) must belong to this subspecies. As a matter of fact No. 3 has rather small wings, but even European adult females may have them still smaller (330 mm). Since it is a young bird having therefore a shorter culmen, and as its dark tail-band agrees with that of the typical form with which it agrees in all other respects, it should no doubt be referred to this.

***Larus argentatus thayeri* Brooks.**

Larus thayeri BROOKS, Bull. Mus. Comp. Zoöl., Vol. LIX, p. 373 (1915—Ellesmere Land, Canada).

Thayer's Herring Gull.

An adult specimen in summer-dress was captured in Thule during spring 1936 and sent to Mr. RUDOLF SAND who presented it to the bird-collection in Herlufsholm School at Næstved, where it is kept now. By the courtesy of Lektor JOHS. FERDINAND it was possible to examine the specimen. Measurements: wing 401 mm, exposed culmen 47 mm. The bluish-grey color on the upper parts is not conspicuously paler than in the Common Herring Gull (*L. a. argentatus* Pont.), but the feathers are rather abraded. The pattern of the primaries is pale greyish-brown, and in comparison with *L. a. argentatus* much reduced in extension (cf. Fig. 3). The bird exactly matches a long series of *L. a. thayeri* from Arctic Canada in the Zoological Museum.

The occurrence of *L. a. thayeri* at Thule is very interesting. Previously only one specimen was known from Greenland¹), viz: Thule ♂ ad. 6th Aug. 1914, captured by Mr. P. FREUCHEN, kept in the Zoological Museum and already mentioned by R. HØRRING (1937, p. 72). The collector has further written on the label: "Red eye-ring, yellow feet and tarsus. Breeds fairly abundantly somewhat north of Cape Parry in the interior of Natsilivik Fjord (Barden Bay)." The measurements of this specimen are: wing 424 mm, culmen 56 mm. The eskimos of Thule are not acquainted with this bird, but Mr. JENS OLSEN of Thule tells F. SALOMONSEN that a colony of probably this species breeds at Kap Trautwine, somewhat north of Natsilivik. As a matter of fact, bad ice conditions in the last years have prevented any investigations in this area. However, *L. a. thayeri* most likely breeds in the Thule District, as it is known as breeding-bird on the opposite side of Smith Sound, in Ellesmere Land.

¹) For a supposed second specimen cf. *L. a. kumlieni*, below.

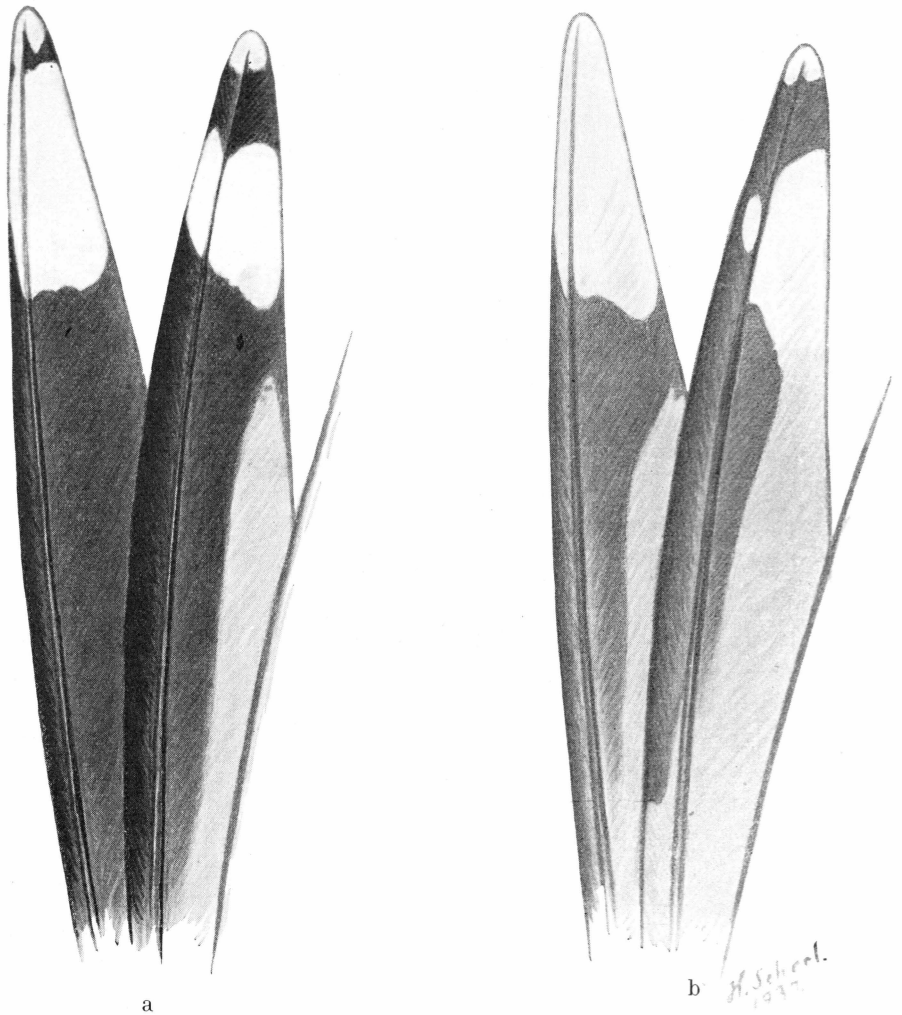
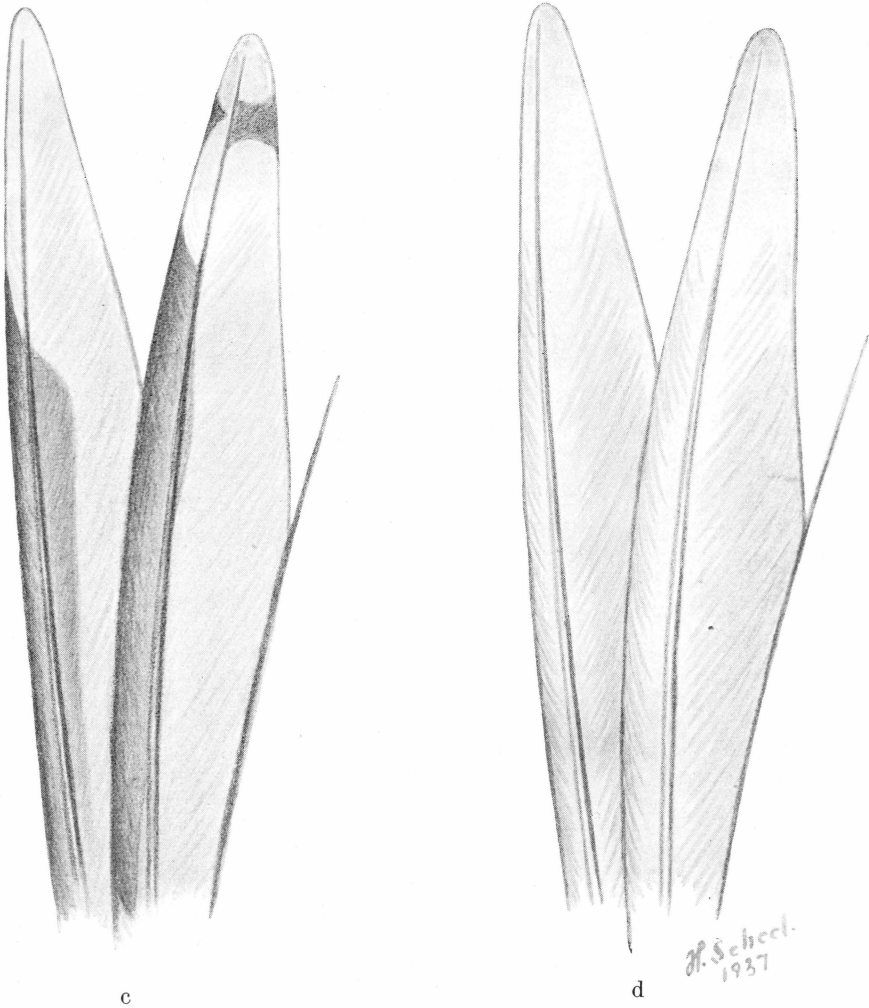


Fig. 3. Outer primaries of various Herring-Gulls (*Larus argentatus* Pont.; all adult birds).

- a. *L. a. argentatus* Pont., Nolso, Faroes, ♀ 1st April 1921; belonging to the Zoological Museum of Copenhagen.
- b. *L. a. thayeri* Brooks, Thule, Northwest Greenland, spring 1936; belonging to the Herlufsholm School, Næstved.

Thayer's Herring Gull breeds on the arctic coast of Canada and the large islands north of it, west of Greenland. The breeding-area is not very well known, and the limit between *L. a. thayeri* and *L. a. argentatus* is uncertain. According to P. A. TAVERNER (1934 a, p. 125) the birds nesting from Southern Baffin Land and Southampton Island southwards are the Common Herring Gull. The 5th Thule expedition discovered that *L. a. thayeri* was breeding commonly on the islands of Frozen Strait north of Southampton Island (R. HØRRING 1937, p. 71).



c

d

- c. *L. a. kumlieni* Brewster, Godthaab, West Greenland, 9th April 1905; belonging to the Zoological Museum of Copenhagen.
- d. *L. a. glaucoides* Meyer, Sukkertoppen, West Greenland, May 1934; belonging to the Zoological Museum of Copenhagen.

***Larus argentatus kumlieni* Brewster.**

Larus kumlieni BREWSTER, Bull. Nuttall Orn. Club, Vol. VIII (1883—Cumberland Sound, Baffin Land).

Kumlien's Herring Gull.

The status of this puzzling bird is still uncertain. In the last edition of the CHECK-LIST (1931, p. 371) *L. kumlieni* has been relegated to the hypothetical list as a probable hybrid between *L. a. thayeri* and *L. glau-*

coides Meyer, and this view is shared by B. STEGMANN in his well-known paper on the relationship of these Gulls (1934, p. 350). However, recent investigations have demonstrated that it breeds in pure colonies in southwestern Baffin Land and at Cape Wolstenholme south of Hudson Strait, so it cannot be regarded as a mere hybrid between the two species mentioned (P. A. TAVERNER 1933, p. 88). As it intergrades with *L. glaucooides* on one hand and *L. a. thayeri* on the other it must be regarded as a subspecies intermediate between these two forms. Also the Greenland Gull (*L. glaucooides* Meyer) should be regarded as a subspecies of *L. argentatus*, since its supposed breeding on the Canadian islands together with *L. a. thayeri* appears to be based on a confusion with *L. hyperboreus* Gunn. (P. A. TAVERNER 1933, p. 90).

Two interesting records of Kumlien's Herring Gull are now known from Greenland:

A young ♂, in juvenile (or 1st winter) plumage was captured at Holsteinsborg 29th Oct. 1898 and by Mr. R. MÜLLER sent to the Zoological Museum. The wing measured 410 mm; the bill is broken. The plumage is very pale, the under-parts unicoloured light greyish-sooty, the upper-parts pale greyish-brown with light spots and edges to the feathers, remiges brownish-grey, much paler than the dark-brown remiges of *L. a. argentatus*, upper wing-coverts very light. Compared with two juveniles of *L. a. thayeri* from Canada (in the Zoological Museum, captured 28th Aug. 1922 at Danish Island, north of Vansittart Island) the specimen from Holsteinsborg is slightly paler above and has slightly paler remiges. R. HØRRING (1937, p. 72) has referred this skin to *L. a. thayeri*, but being somewhat paler than the young of this form it probably belongs to *kumlieni*. This is especially interesting as the juvenile of *kumlieni* has never been definitely identified.

The second specimen is a fine adult bird in summer-plumage, shot at Godthaab 9th April 1905 and by Dr. TH. N. KRABBE sent to the Zoological Museum. The wing measured 410 mm, the bill 46 mm. The upper parts are somewhat darker than in *L. a. glaucooides*, but paler than in *L. a. thayeri*, exactly intermediate in colour. The darker pattern of the outer primaries are also intermediate (cf. Fig. 3), being paler than in *thayeri* or at least as pale as the palest *thayeri*. The reduction of the greyish-brown pattern is much more pronounced than in *thayeri*, as it appears distinctly from Fig. 3. The pattern of the primaries of this specimen exactly matches the pattern of *L. kumlieni* figured by P. A. TAVERNER (1938, p. 221). There is, however, a considerable variation in the wing-pattern, as shown by TAVERNER (1938, p. 221), who examined a series from a breeding-place.

It is interesting that the localities Godthaab and Holsteinsborg, where the above-mentioned specimens are secured, are situated on

Davis Strait almost opposite the breeding-places of this subspecies in the southern parts of Baffin Land¹).

Larus argentatus argentatus Pont.

Larus Argentatus PONTOPPIDAN, Danske Atlas, Vol. I, p. 622 (1763—Denmark).

The Common Herring Gull.

In recent time the Herring Gull has been divided into three forms recognizable only with difficulty, viz: *argentatus* Pont., *argenteus* Brehm and *smithsonianus* Coues. In Greenland the American *smithsonianus* and the Atlantic *argenteus* would be expected to occur. As most of the Greenland specimens are immature a racial determination could not be carried out, so the specimens from Greenland are kept provisionally under the name *argentatus*. The division of the European Herring Gulls in the two forms *argentatus* and *argenteus* which is accomplished by STEGMANN (1934), MEINERTZHAGEN (1935) and others has not been found satisfactory, judging from the large Danish collection in the Zoological Museum. For the darker, eastern birds with yellow legs the name *omissus* Pleske should be kept, whereas the birds breeding from Denmark and westwards should be called *argentatus* Pont., as has been done by E. HARTERT and F. STEINBACHER (1938, p. 495). The type-locality of *argentatus* Pont. is Christiansø (off Bornholm) and by far the majority of the breeding-birds here have flesh-coloured legs.

The Common Herring Gull has been recorded the following times from Greenland:

1. An adult bird in winter plumage from Western Greenland, secured about 1850 (mentioned by H. WINGE 1898, p. 178). Wing measures 453 mm, culmen 62 mm. The rather large wing length and the existence of a dark penultimate spot on inner web of the first primary indicates that this specimen belongs to the so-called *smithsonianus* Coues, as has already been stressed by WINGE.

2. A two or three years old bird captured at Godthaab 28th June 1886 (mentioned by H. WINGE 1898, p. 178). Wing measures 405 mm, culmen 55 mm. The bluish-grey colour of the back is almost as pale as in *thayeri*, and the primaries are pale, light brownish, but very abraded. The colour and the small proportions tend to show that it belongs to *thayeri*, but the question cannot be answered satisfactorily; it may as well be a *smithsonianus*.

¹) P. A. TAVERNER (1933, p. 90) is inclined also to reinstate *Larus nelsoni* Henshaw as a species. In this connection it may be of interest that a specimen of this Gull was shot at Upernavik 8th Sept. 1886, mentioned by H. WINGE (1898, p. 180).

3. An adult bird in winter-plumage mentioned by H. WINGE (1898, p. 178), captured at Nanortalik about 1850. This is the well-known type-specimen of *Larus affinis* Reinhardt which has given rise to so much confusion in the nomenclature of these gulls. H. WINGE (1898, p. 178) was aware already that this specimen was a Herring Gull, and the question about its identity has been finally decided by F. R. C. JOURDAIN (1929, p. 82). I quite agree with these authors that the bird is a Herring Gull. I have measured a series of Herring Gulls and found that the middle-toe constitutes 96—97 per cent of tarsus, whereas in the Lesser Black-backed Gull (*L. fuscus graellsii* Brehm) it amounts to only 86—88 per cent. In the type of *L. affinis* the percentage is 97 (middle-toe 60 mm, tarsus 62 mm), as in the Herring Gull.

The following records have not previously been published:

4. An immature bird in first winter-plumage, captured at Kangek at Godthaab 15th Dec. 1908 and by Dr. TH. N. KRABBE sent to the Zoological Museum. The wing measures 406 mm, culmen 53 mm. In coloration it does not differ from Danish specimens of the same age.

5. A two or three years old bird secured at Godthaab 25th May 1922, sexed as ♀, and by Mr. JOHN MØLLER sent to the Zoological Museum. Wing measures 416 mm, culmen 54 mm. It probably belongs to the American population (*smithsonianus*), as the back is very light bluish.

6. An adult bird captured at Qârusulik (Blochs Ø) in Upernavik District spring 1927, and by Dr. A. BERTELSEN sent to the Zoological Museum, where it is kept now. Wing measures 435 mm, culmen 58 mm. It agrees in many respects with the European *argentatus*, but the sub-specific status is impossible to determine¹).

Rhodostethia rosea (Macgillivray).

Larus roseus MACGILLIVRAY, Mem. Wernerian Soc., Vol. V, p. 249 (1824—Igloolik, Melville Peninsula).

Ross's Gull.

This beautiful little Gull is known to breed in the delta of Kolyma River, northeastern Siberia, and Indigirka River, from its mouth to 300 miles inland; presumably it breeds also in arctic America, the New-Siberian islands etc. It seems to straggle far about and is recorded in summer from Spitsbergen, Franz Joseph Land, Bennett and Wrangel

¹) For the sake of completeness it may be mentioned here that an adult bird of *Larus fuscus graellsii* Brehm in fine summer-dress was captured at Qôrnoq at Godthaab 15th April 1920 and by Mr. JOHN MØLLER sent to the Zoological Museum, where it is kept now. The wing measured 398 mm, culmen 48 mm. This bird was briefly mentioned by E. L. SCHIØLER (1926, p. 337).

islands, Siberia and Melville Peninsula. (CHECK-LIST 1931, p. 137). It is casually met with in England, the Faroe islands, Heligoland, France, and Sardinia.

In Greenland it has appeared not a few times, thus at the west coast 1806—1813, Jakobshavn about 1863, ad. Sukkertoppen 1863, ad. Grønne Ejland 1869, ad. Claushavn 1869, ad. Melville Bugt 19th June 1873 (sight-record), ♂ ad. and ♀ ad. Egedesminde 15th June 1885, ♂ ad. Christianshaab July 1890, 3 birds in Jakobshavn 1892—93 (H. WINGE 1898, p. 200), ad. Godthaab 12th May 1917 (E. L. SCHIÖLER 1917, p. 175), ♂ ad. Godthaabsfjord 1st June 1927, Christianshaab District 1880 (K. OLDENDOW 1933, p. 89).

To these 12 records from Greenland the following can be added:

1. An adult ♀ was shot at Grønne Ejland 12th June 1904. The skin was presented to the Zoological Museum (C. N. 3) by Governor O. P. C. KOCH. Wing measures 266 mm, exposed culmen 28.5 mm. It is certainly this skin to which OLDENDOW refers (*l. c.* p. 91) when stating that a fully plumaged bird was shot at Grønne Ejland 1906 or 1908.

2. An adult specimen from Greenland shot between 1840 and 1856; the skin was secured by C. HOLBØLL, and this finely mounted specimen was presented to the Zoological Museum (C. N. 4) in 1914 by E. HOLBØLL. Wing measures 277 mm, exposed culmen 20 mm. Presumably it is this specimen to which WINGE (1898, p. 200) refers when stating that "in his last years HOLBØLL is said to have had a skin from Greenland".

3. An adult ♀ in fine summer dress was shot in Godthaabsfjord 4th June 1918. The skin was sent to the Zoological Museum (C. N. 8) by JOHN MØLLER. Wing measures 267 mm, exposed culmen 18 mm. This record is mentioned by K. OLDENDOW (1933, p. 90), however without exact dates.

***Stercorarius skua skua* (Brünnich).**

Catharacta Skua BRÜNNICH, Ornith. Bor., p. 33 (1764—Faroes).

The Great Skua.

This species is said to breed near Lady Franklin Island at the mouth of Davis Strait, and on southeastern Baffin Land (CHECK-LIST 1931, p. 129). It also breeds in Iceland, the Faroes, Shetland and Orkney islands. It has been met with now and then on the coasts of Greenland. The records are as follows: One 1823 (sight-record), two before 1840 on the southern coast (sight-record), juv. Umanak 1881 (H. WINGE 1898, p. 214), Ivigtut 1899, Ujaragsugssuk at Disco 1902 (A. BERTELSEN 1921, p. 174), ♂ juv. Julianehaab¹) (E. L. SCHIÖLER 1911, p. 78), ad.

¹) According to SCHIÖLER's catalogue the bird was shot 18th Dec. 1906.

Sagdlit 15th July 1926, ♂ ad. Frederikshaab July 1927, ♀ ad. Fiskenaes 10th Sept. 1928, ♂ ad. Sukkertoppen 12th Aug. 1929, Kangâmiut autumn 1931 (K. OLDENDOW 1933, p. 106) 2 ♀♀ ad. Scoresby Sound 26th May 1928, and 10th June 1928 (A. PEDERSEN 1930, p. 480), Sukkertoppen summer 1933, *ibid.* summer 1934 (sight-record) (F. SALOMONSEN 1935, p. 8).

To these records the following can now be added:

1. Adult male shot off Jakobsholmen at Godthaab 2nd July 1910. The skin was presented to the Zoological Museum (C. N. 35) by Dr. TH. N. KRABBE. Wing 389 mm, exposed culmen 47 mm.

Uria aalge aalge (Pont.).

Colymbus aalge PONTOPPIDAN, Danske Atlas, Vol. I, p. 621 (1763—Iceland).

The Atlantic Murre.

This subspecies breeds from southern Labrador, and the Gulf of St. Lawrence south to Nova Scotia, and in Iceland and Norway. From Greenland a long series of records are now known from the southern part of the west coast.

The following occurrences of the Atlantic Murre were previously known from Greenland: Godthaab 2 specimens Dec. 1839, Fiskenaes 17th Nov. 1874, Kangeq near Godthaab 15th Jan. 1893, Narssaq near Godthaab 1st Feb. 1893 (H. WINGE 1898, p. 221), Godthaab ♂ 15th Jan. 1925, Godthaab ♂ and ♀ 3rd March 1926, Godthaab ♂ 18th Dec. 1926, Godthaab ♀ 2nd Feb. 1927, Sukkertoppen ♀ end of June 1928, Sukkertoppen ♀ (mut. *rhingvia*) 15th April 1929 and Sukkertoppen ♀ (mut. *rhingvia*) 12th May 1929 (K. OLDENDOW 1933, p. 109).

The following records of skins kept in the Zoological Museum of Copenhagen can now be added to the above mentioned; the greater part of the birds are in winter plumage.

1. A specimen (mut. *rhingvia*) shot at Godthaab 18th Feb. 1892. The skin received from Dr. TH. N. KRABBE (C. N. 37). Wing 197 mm, exposed culmen 46 mm.
2. A juvenile bird shot at Godthaab 22nd Feb. 1893. The skin received from Dr. TH. N. KRABBE (C. N. 30). Wing 199 mm, exposed culmen 41 mm.
3. A juvenile bird shot at Godthaab 12th Feb. 1893. The skin received from Dr. TH. N. KRABBE (C. N. 35). Wing 185 mm, exposed culmen 40 mm.
4. A specimen shot at Godthaab 18th Jan. 1895. The skin received from Dr. TH. N. KRABBE (C. N. 33). Wing measures 195 mm, exposed culmen 40 mm.
5. An adult bird (mut. *rhingvia*) shot at Nyherrnhut near Godthaab

- 3rd Jan. 1898. The skin received from Dr. TH. N. KRABBE (C. N. 36). Wing 202 mm, exposed culmen 42.
6. A juvenile bird shot at Julianehaab 16th Jan. 1899. The skin was secured by Dr. G. MELDORF and presented by his widow (C. N. 38). Wing 194 mm, exposed culmen 43 mm.
 7. A juvenile bird shot at Godthaab 5th Feb. 1900; the skin was received from Dr. TH. N. KRABBE (C. N. 34). Wing 187 mm, exposed culmen 40 mm.
 8. A specimen shot at Sukkertoppen 14th Feb. 1904; the skin was received from Dr. TH. N. KRABBE (C. N. 31). Wing 191 mm, exposed culmen 41 mm.
 9. An adult bird shot at Sukkertoppen 1934; the skin was received through H. MADSEN (C. N. 178). Wing 197 mm, exposed culmen 43 mm.
 10. An adult bird shot at Agpamiut near Sukkertoppen in Jan. 1934. The skin was presented to the Zoological Museum by GITZ JOHANSEN (C. N. 177). Wing 205 mm, exposed culmen 42 mm.
 11. A juvenile male shot at Godthaab 23rd Nov. 1901. The skin came to the Zoological Museum with the G. WEDELL WEDELLSBORG collection (C. N. 182). Wing 193 mm, exposed culmen 38 mm.
 12. A specimen shot at Godthaab 17th March 1894. The skin was presented to the Zoological Museum by Dr. TH. N. KRABBE (C. N. 32). Wing 201 mm, exposed culmen 44 mm.
 13. An adult specimen in pure summer-plumage (mut. *rhingvia*) shot at Sermilínguaq, Sukkertoppen in May 1932. The skin was sent to the Museum by N. L. NIELSEN (C. N. 174). Wing 204 mm, exposed culmen 43 mm.
 14. An adult specimen in fine summer-dress shot at Semilínguaq, Sukkertoppen in May 1932. The skin was sent to the Museum by N. L. NIELSEN. Wing 208 mm, exposed culmen 45 mm.

Further, the following skins are kept in SCHIÖLER's collection (now in the Zoological Museum):

15. A young specimen shot at Narssaq near Godthaab in Jan. 1893; sent by Dr. TH. N. KRABBE. Wing 200 mm, exposed culmen 40 mm.
16. A young specimen shot at Godthaab 14th Feb. 1893; sent by TH. N. KRABBE. Wing 196 mm, exposed culmen 36 mm.
17. A young specimen shot at Godthaab 7th Feb. 1900; sent by Dr. TH. N. KRABBE. Wing 195 mm, exposed culmen 38 mm.
18. A young male shot at Godthaab 20th Dec. 1901; sent by JOHN MØLLER. Wing 189 mm, exposed culmen 29 mm.
19. An adult female in fine summer-dress (mut. *rhingvia*) shot at Sukkertoppen 15th Sept. 1904. Primaries worn, exposed culmen 44 mm.

These 19 skins all have nearly unspotted white underwing-coverts.

As it will be seen, the wing-lengths are between 185 mm (young birds) and 208 mm (adult birds), and the birds should therefore be referred to the typical form. This subspecies is not known from the east coast of Greenland; the records known from the west coast are presumably either stragglers from the North American populations, or birds that have their breeding-grounds here, which are however not known with certainty.

The records of *Uria aalge*, 30 in all, from Greenland are, as it will be seen from the above, all from the west coast, from Julianehaab to Sukkertoppen, however so that 21 were shot in the vicinity of Godthaab, 9 in Sukkertoppen, and only 1 in Fiskenes and 1 in Julianehaab. All the 21 skins from Godthaab are in winter plumage, but 4 out of the 9 from Sukkertoppen are in pure breeding plumage. Thus it seems reasonable to suppose that it breeds here, singly and scattered among the vast numbers of *Uria lomvia*, as suggested by K. OLDENDOW (1933, p. 110) according to information from Greenlanders.

***Zenaidura macroura carolinensis* (L.).**

Columba carolinensis LINNAEUS, Syst. Nat., Ed. XII, Vol. I, p. 286 (1766—South Carolina).

The Eastern Mourning Dove.

This dove breeds in North America from New Brunswick, Nova Scotia, southern Maine, Ontario, Michigan and Wisconsin west to eastern Kansas and Iowa (CHECK-LIST 1931, p. 153).

A juvenile bird was shot at Narssalik 10th July 1901; the skin was sent to the Zoological Museum of Copenhagen (C. N. 1) by Mr. NYEKJÆR. The wing measures 145 mm, exposed culmen 15 mm. This record is the first and only one known from Greenland.

***Ardea cinerea cinerea* L.**

Ardea cinerea LINNAEUS, Syst. Nat. Ed. X, Vol. I, p. 143 (1758—Europe; type-locality restricted to Sweden).

The European Heron.

This species which is widely distributed as a breeding bird in Europe and West Asia right down to India and Cape Colony winters in the British Isles, South Europe and Africa; it also appears frequently in the Faroes and Iceland. In Greenland too it has occurred a few times. The following records are known: juv. Nanortalik 1856, juv. Godthaab

1862, juv. Godthaab 14th Jan. 1877, juv. Julianehaab autumn 1888, juv. Eggers Ø autumn 1893 (H. WINGE 1898, p. 242), ♀ juv. Julianehaab 30th Oct. 1910 (2 birds seen) (E. L. SCHIØLER 1911, p. 78), juv. Nanortalik spring 1926, and juv. Frederiksdal 8th Aug. 1932 (K. OLDENDOW 1933, p. 125).

To the above two new records can now be added:

1. A juvenile specimen, not sexed, was shot at Narssaq near Godthaab 28th Oct. 1894; the skin was presented to the Zoological Museum (C. N. 30) by Dr. TH. N. KRABBE. Wing 464 mm, exposed culmen 119 mm, tarsus 151 mm.

2. A young specimen was found dead on Kap Dan near Angmagssalik 13th Oct. 1918. The skeleton was sent to the Zoological Museum (C. N. 52) by Governor HEDEGAARD. Possibly it is this specimen to which A. PEDERSEN refers (1930, p. 490) when stating that the Reverend SEJR ABELSEN "vor fünf Jahren" found a dead Heron on Kap Dan near Angmagssalik.

As appears from the above that all the birds found or shot in Greenland are young individuals.

***Ardea herodias herodias* L.**

Ardea Herodias LINNAEUS, Syst. Nat., Ed. X, Vol. I, p. 143 (1758—Hudson Bay).

The Great Blue Heron.

A young male was shot at Vester Eiland near Egedesminde 25th Oct. 1918. The skin was sent to the Zoological Museum (C. N. 1) by Governor FENCKER. The wing measures 464 mm, exposed culmen 122 mm, tarsus 166 mm.

This is the first appearance in Greenland of this species; as it is a young bird, an exact determination of the subspecies can hardly be made, but since the typical race is widely distributed almost throughout Canada, from Nova Scotia to British Columbia down to Iowa and Nebraska, the specimen no doubt is referable to this subspecies.

***Platalea leucorodia leucorodia* L.**

Platalea Leucorodia LINNAEUS, Syst. Nat., Ed. X, Vol. I, p. 139 (1758—Europe).

The Spoonbill.

A Greenland record of this bird, breeding in South and Middle Europe and in temperate parts of Asia, is extraordinarily interesting. The occurrence of the Spoonbill in the northern parts of the Atlantic

is very sporadic. In Greenland and Iceland it has never been met with before, and from the Faroes only 2 records are known (F. SALOMONSEN 1935 a, p. 55).

The 4th Oct. 1936 a specimen was shot at the settlement Itivdleg in the southernmost part of Julianehaab District not far from Kap



Fig. 4. *Platalea leucorodia leucorodia* L., Itivdleg, Julianehaab District, 4th Oct. 1936, a young bird; belonging to the bird-collection of the seminary in Godthaab. First Greenland record.

Farvel. The Spoonbill was wading in a little marsh near the houses when it was shot. It was bought by sheriff SVANE and was skinned and sent to Director K. OLDENDOW who presented it to the bird-collection in the seminary of Godthaab, where it is kept now. Director OLDENDOW kindly gave F. SALOMONSEN permission to examine the bird. It is a young bird, the plumage being entirely white without any yellowish tint on head and neck, the remiges having black tips or shaft-stripes, the bill being almost smooth without corrugations. Measurements: wing 382 mm, culmen (from feathers) 209 mm, tarsus 147 mm, middle-toe 90 mm. The rather large measurements show that it was a male. The specimen is figured in Fig. 4.

***Diomedea melanophrys* Temm.**

Diomedea melanophrys (*rectius melanophrys*) TEMMINCK Planch. Color. 456 (1828—Cape of Good Hope).

The Black-Browed Albatros.

A specimen of this rare bird was shot at Lille Hellefiskebanke (off Sukkertoppen, at about 66° n. lat.) at the end of Aug. 1935 by Mr.

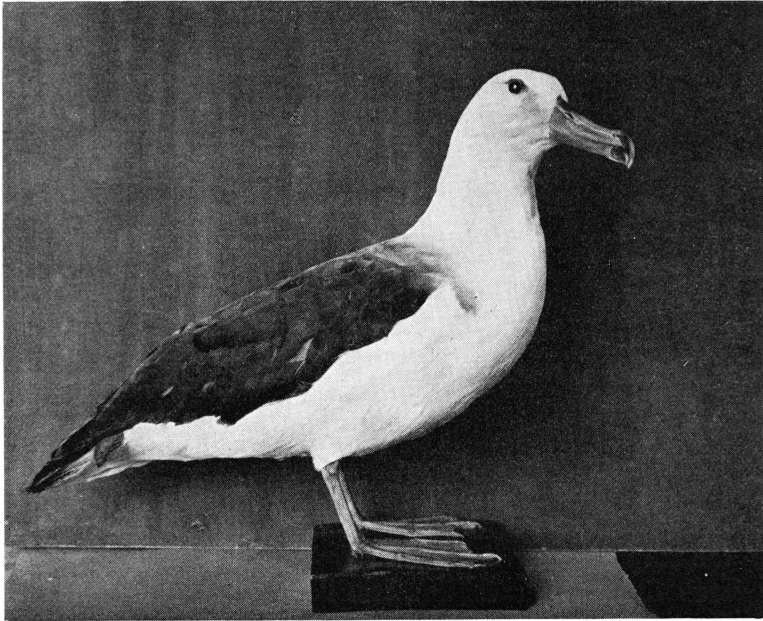


Fig. 5. *Diomedea melanophrys* Temm., Lille Hellefiskebanke off Sukkertoppen, ♀, the end of Aug. 1935; belonging to the Thorshavn Museum. First Greenland record.

ARNI JOENSEN, a Faroese from Nolsø, who that summer was fishing off the Greenland coast. Mr. JOENSEN says that the Albatros had joined a party of Kittiwakes and flew around while the Kittiwakes were feeding on some cod-liver thrown overboard from the fishing-vessel. Mr. JOENSEN presented the bird to the Faroese bird-collection in Thorshavn Museum, Faroes. On the request of FINN SALOMONSEN the leader of Thorshavn Museum, Mrs. PETRA DJURHUUS sent the bird to Copenhagen and so giving SALOMONSEN the opportunity of examining it.

The Albatros, which is sexed as female, is figured in Fig. 5. The tip of bill and the base of culmicorn is dark horn-brown, so the specimen probably is a rather young bird. Head and neck are white without any trace of greyish colour, *i. e.* it belongs to the white phase¹⁾. Measure-

¹⁾ It is usually stated that young birds have grey heads. H. F. WITHERBY (1924, p. 446), however, has proved that the white-headed and grey-headed birds are only colour-phases.

ments: wing 498 mm, exposed culmen 115 mm, tarsus 87.5 mm, middle-toe and claw 131 mm.

This Greenland record is exceedingly interesting, as the Black-Browed Albatros has not been seen in the northern hemisphere for almost 50 years. It breeds on islands in the temperate belt of the southern hemisphere and has a few times strayed northwards in the Atlantic. The following records from the northern hemisphere were previously known: At 80°11' n. lat., 4° e. long. (NW of Spitsbergen) 15th June 1878 (the specimen kept in the Peterhead Museum, England), Cambridgeshire, England 9th July 1897 (the specimen is in the Cambridge Museum), Myggenæs Holm, Faroes ♀ ad. 11th May 1894 (the specimen in the Copenhagen Zoological Museum), about 40 miles Southwest of the Faroes ♀ ad. 10th May 1900 (the specimen in the Copenhagen Zoological Museum). Cf. E. HARTERT 1912—21, p. 1442; and F. SALOMONSEN 1935 a, p. 55).

Morus bassanus bassanus (L.).

Pelecanus Bassanus LINNAEUS, Syst. Nat., Ed. X, Vol. I, p. 133 (1758—Scotland, America).

The Gannet.

The Gannet is a very rare guest in the Davis Strait, where it is recorded only in the southernmost parts. According to H. WINGE (1898, p. 245) the only definite Greenland record is a specimen received from Julianehaab 1842. This specimen, still kept in the Zoological Museum, is a semi-adult, 2—3 years old bird. Besides this, WINGE mentions 3 older, indefinite records. Further, a 2 years old bird was shot a Nanortalik autumn 1924 (H. SCHEEL 1927, p. 78; K. OLDENDOW 1933, p. 128). It has never been met with on the east coast of Greenland.

The Gannet is of north-Atlantic distribution, breeding Gulf of St. Lawrence, New Foundland, Iceland, Faroes, Scotland, Ireland, in winter moving south in the Atlantic, as far as Mexico-Morocco.

Two new records can now be added:

1. A Gannet in juvenile plumage was shot by a Greenlander at Qaersog, south of Julianehaab in Oct. 1933. The wing measures 475 mm, exposed culmen 95 mm. The bird was received by Dr. LAURENT CHRISTENSEN, who presented it to F. SALOMONSEN. It is now in the Zoological Museum.

2. An adult specimen was shot at Syd Cap, Scoresby Sound 1934. Its head was sent in a dried condition to the Zoological Museum of Copenhagen (C. N. 97) by Governor JOHAN PETERSEN. Exposed culmen 96 mm.

***Asio flammeus flammeus* (Pont.).**

Strix flammea PONTOPPIDAN, Danske Atlas, Vol. I, p. 617, pl. XXV (1763—Denmark).

The Short-eared Owl.

This very widely distributed species has been captured a number of times in Greenland. The following records are published: Tunugdliarfik Fjord in Julianehaab District about 1835, Julianehaab 1826, Sukkertoppen 1826, Fiskenæs 1842, Julianehaab 1842, "West Greenland" about 1851, Grønne Ejland in Disko Bay 1869, *ibid.* June 1891, Umanak about 1884, Søndre Upernavik in Upernavik District end June 1889 (H. WINGE 1898, p. 263), Angmagssalik 28th May 1908 (J. PETERSEN 1908, p. 16), Umanak spring 1902, *ibid.* ♀ 6th June 1914 (A. BERTELSEN 1921, p. 193), Angmagssalik 1922 (A. PEDERSEN 1930, p. 492), Jakobs-havn June 1925 (F. SALOMONSEN 1931, p. 50), Narssaq in Godthaab District ♂ 21st June 1930, Nanortalik 16th Dec. 1932 (K. OLDENDOW 1933, p. 149), Hochstetter Vorland in Northeast Greenland spring 1931 (A. PEDERSEN 1934, p. 27).

The following records are added:

1. A specimen was shot at Lichtenau in Julianehaab District by the Greenlander CHRISTOFFER SIMONSEN in the autumn of 1935 and was by Dr. LAURENT CHRISTENSEN sent to FINN SALOMONSEN, who forwarded it to the Zoological Museum. The wing measures 324 mm, exposed culmen 29 mm.

2. A specimen was shot at the settlement Nûk in the southern part of Julianehaab District 12th Dec. 1936 and by Dr. LAURENT CHRISTENSEN presented to FINN SALOMONSEN, who forwarded it to the Zoological Museum. The wing measures 313 mm, exposed culmen 28.5 mm.

3. A specimen was shot at Julianehaab 20th Dec. 1897. The skin was sent to the Zoological Museum (C. N. 43) by Dr. G. MELDORF. Wing measures 318 mm, exposed culmen 28 mm.

4. A specimen was shot at Julianehaab 25th Oct. 1900. The skin was sent to the Zoological Museum (C. N. 44) by Dr. G. MELDORF. The wing measures 313 mm, exposed culmen 28 mm.

5. A specimen was shot at Itivdleg between Fortune Bay and Disco Fjord in June 1902. The skin was sent to the Zoological Museum (C. N. 21) by Director DAUGAARD-JENSEN. Wing measures 312 mm, exposed culmen 28 mm.

6. A male was found dead in the water near Kistefjældet at Sukkertoppen 26th Oct. 1903. The skin was presented to the Zoological Museum (C. N. 39) by Dr. TH. N. KRABBE. Wing measures 313 mm, exposed culmen 28 mm.

7. A specimen was shot at Christianshaabs Nûk in the beginning of

June 1907. The skin was sent to the Zoological Museum (C. N. 23) by GOVERNOR CARL HARRIES. Wing measures 318 mm, exposed culmen 28 mm.

8. An adult male was shot at Godhavn 5th June 1912. The skin was sent to the Zoological Museum (C. N. 64) by Dr. M. P. PORSILD. Wing measures 314 mm, exposed culmen 27 mm.

9. A specimen was found dead on the sea ice near the settlement Qarmat at Igdlorssuit in Umanak District 8th May 1922 by PETER SAKÆNSEN. The skin was presented to the Zoological Museum (C. N. 91) by Dr. A. BERTELSEN. Wing measured 310 mm, exposed culmen 27.5 mm.

10. A male was shot at Ikerasak in Umanak District 5th June 1922 by SAMUEL EMANUELSEN. It was sitting on a little plain, lonely and full of confidence. The stomach was empty, and the bird emaciated. The skin was presented to the Zoological Museum (C. N. 87) by Dr. A. BERTELSEN. Wing measures 318 mm, exposed culmen 28 mm.

11. A male was shot at Lichtenfels 20th May 1925. It was sold to the Zoological Museum (C. N. 89) by JOHN MØLLER. Wing measures 310 mm, exposed culmen 28 mm.

SCHIØLER's collection (now in the Zoological Museum) contains the following 4 skins:

12. A male shot at Kangâmiut near Sukkertoppen 16th Dec. 1905. The skin was sent to SCHIØLER (C. N. 112) by Governor L. BISTRUP. Wing measures 310 mm, exposed culmen 29.5 mm.

13. A specimen shot at Lichtenfels about 1903. The skin was sent by Dr. TH. N. KRABBE (C. N. 113). Wing measures 312 mm, exposed culmen 18 mm.

14. A specimen shot at Julianehaab 6th June 1910. The skin was sent by JENSEN (C. N. 111). Wing measures 314 mm, exposed culmen 18 mm.

15. A specimen shot at Kangeq, Godthaab 6th June 1914 by JOHN MØLLER. The skin was sent by Dr. TH. N. KRABBE (C. N. 110). Wing measures 315 mm, exposed culmen 18 mm.

Of the records hitherto known from Greenland 20 give dates of capture. Curiously enough, 3 were collected in May, and no less than 11 in June, *i. e.* in the breeding-season; 2 are from October and 4 from December, none from the remaining months. The species has never been recorded as breeding in Greenland.

***Coccyzus erythrophthalmus* (Wilson).**

Cuculus erythrophthalmus WILSON, Amer. Orn., Vol. IV, p. 16 (1811—Philadelphia).

The Black-billed Cuckoo.

This species breeds in eastern North America from southeastern Alberta, southern Manitoba, southern Quebec, and Prince Edward

Island south to Kansas, Arkansas, North Carolina, and mountains of Georgia (CHECK-LIST 1931, p. 160). The species has appeared a few times in Ireland, and once in Italy.

1. A juvenile bird was found dead at Kangâmiut near Sukkertoppen in October 1893; the skin was presented to the Zoological Museum (C. N. 1) by Dr. TH. N. KRABBE. The wing measured 139 mm, tail 158 mm, exposed culmen 19.5 mm.

2. A juvenile bird was shot at Julianehaab about 1900. The skin was kept by Dr. G. MELDORF, whose widow presented it to the Zoological Museum (C. N. 2). The wing measured 135 mm, tail 146 mm, exposed culmen 20.5 mm.

These two records are the first from Greenland; previously, only the closely allied *Coccyzus americanus* was known as an accidental visitor to the west coast.

Sphyrapicus varius varius (L.).

Picus varius LINNAEUS, Syst. Nat., Ed. XII, Vol. I, p. 176 (1766—South Carolina).

The Yellow-bellied Sapsucker.

This Sapsucker, which is widely distributed in eastern North America, has occurred three times on the west coast of Greenland, viz: Julianehaab ♀ July 1845, South Greenland ♀ about 1857—1858 (H. WINGE 1898, p. 267), Angmagssivik in the southern part of Julianehaab District ♂ ad. spring 1926 (H. SCHEEL 1927, p. 78).

To these occurrences the following new record can be added:

An adult male was found dead at Julianehaab 6th May 1934 by Mr. A. P. KIELSEN; the skin was presented to the Zoological Museum (C. N. 3) by Mr. P. IBSEN. Wing measured 117 mm, exposed culmen 23 mm.

Eremophila alpestris alpestris (L.).

Alauda alpestris LINNAEUS, Syst. Nat., Ed. X, Vol. I, p. 166 (1758—South Carolina).

The Northern Horned Lark.

This subspecies breeds in Canada from Hudson Strait southwards to the head of James Bay, Labrador, Southeastern Quebec and Newfoundland. Only the following records were previously known from Greenland: ad. Godthaab October 1835 (H. WINGE 1898, p. 274), ♂ Sukkertoppen 13th Oct. 1910, and 5 specimens seen at Godthaab 10th Sept. 1930 (K. OLDENDOW 1933, p. 163).

To these records the following can now be added:

The Zoological Museum received the following 5 skins from Dr. TH. N. KRABBE:

1. An adult male was shot at Ûmánaq near Godthaab 23rd Oct. 1893 (C. N. 8). Wing 112 mm, exposed culmen 12.5 mm.

2. An adult male was shot at Godthaab 20th Sept. 1894 (C. N. 6). Wing 113 mm, exposed culmen 11 mm.

3. A juvenile bird was shot at Godthaab 5th Oct. 1898 (C. N. 5). Wing 104 mm, exposed culmen 12 mm.

4. An adult female was shot at Narssaq near Godthaab 23rd Sept. 1899 (C. N. 9). Wing 110 mm, exposed culmen 12 mm.

5. An adult male was shot at Godthaab 2nd Oct. 1908 (C. N. 7). Wing 114 mm, exposed culmen 12 mm.

The Zoological Museum further received with SCHIØLER's collection the following 5 skins, all originating from Dr. TH. N. KRABBE.

6. An adult male was shot at Godthaab 19th May 1898 (C. N. 83). Wing 117 mm, exposed culmen 12 mm.

7. An adult male was shot at Godthaab 28th May 1903 (C. N. 84). Wing 111 mm, exposed culmen 12.5 mm.

8. An adult male was shot at Godthaab 2nd June 1903 (C. N. 82). Wing 112 mm, exposed culmen 15 mm.

9. An adult male was shot at Godthaab 5th June 1903 (C. N. 80). Wing 112 mm, exposed culmen 12.5 mm.

10. A female was shot at Godthaab 13th Oct. 1908 (C. N. 81). Wing 103 mm, exposed culmen 10.5 mm.

All these 10 skins should no doubt be referred to the typical form *E. alpestris alpestris*, which has its breeding-grounds as close as Labrador. Their superciliary stripe and throat are distinctly pale yellow and not white, and their lesser wing coverts are more vinaceous cinnamon and not pale vinaceous, which last mentioned features among other things characterize the subspecies *E. alpestris hoyti* Bishop living more westward, belonging to the regions from the west coast of Hudson Bay to Mackenzie River. Their considerable culmen, up to 15 mm, which far exceeds that of the European form, shows that they cannot be referred to the European subspecies *Eremophila alpestris flava* (Gml.) which has its nearest breeding-grounds in Scandinavia.

***Petrochelidon albifrons albifrons* (Rafinesque).**

Hirundo albifrons RAFINESQUE, Kentucky Gazette, n. s. Vol. I, No. 7, p. 3 (1822
—Kentucky & Indiana; type-locality restricted to Kentucky).

The Northern Cliff Swallow.

This species has hitherto not been recorded from Greenland. An adult specimen (judging from the measurements a male) was captured

in Sukkertoppen in the spring of 1936 and by Dr. CHRISTENSEN sent to Mr. RUDOLF SAND, Copenhagen, in whose collection it is now kept. By the courtesy of Mr. SAND, F. SALOMONSEN was able to examine the bird. It is shown in Fig. 6. The wing measures 115 mm.

The Cliff-Swallow is a North and Middle American bird, breeding northwards to central Alaska, the upper Yukon valley, north-central

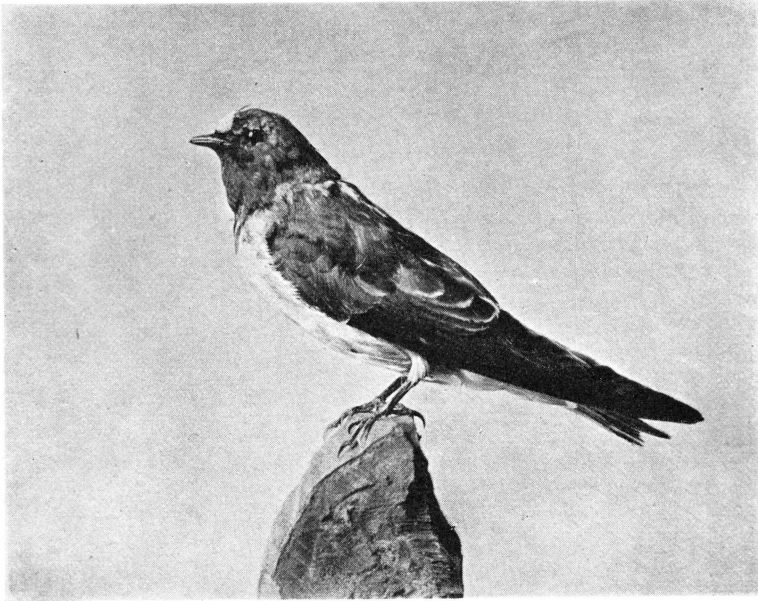


Fig. 6. *Petrochelidon albifrons albifrons* (Rafinesque), Sukkertoppen, spring 1936, an adult bird; belonging to the bird-collection of Mr. Rudolf Sand, Copenhagen. First Greenland record.

Mackenzie, northern Ontario and southern Quebec; its occurrence in Greenland could be expected and is not especially extraordinary.

Apart from some southern races, of which *P. a. melanogaster* (Swainson) is a very distinct form, the birds of the Northwest have recently been separated as *P. a. hypopolia* H. C. OBERHOLSER (1919, p. 95). As the Greenland specimen may belong to this race I have examined a good series of Cliff-Swallows in the British Museum (Nat. Hist.). The distribution of *P. a. hypopolia* is by the describer given as "north to Mackenzie and central Alaska; west to central British Columbia; south to Montana, and east to Alberta and Mackenzie". It is said to be larger than *P. a. albifrons* and to have frontal band paler, more whitish and breast more greyish, less ochraceous. The material studied by me shows that the northwestern birds are on an average larger and have often more white frontal band than the southeastern specimens, but the differences appear

to be too slight and the overlapping to be too large to admit the separation of a race *hypopolia*. OBERHOLSER gives the measurements of wing as follows: *albifrons* ♂♂: 105—112 mm, ♀♀: 102—109 mm; *hypopolia* ♂♂: 110—115 mm, ♀♀: 108—111.5 mm. I have taken the following measurements (on the material in the British Museum): *albifrons* ♂♂: 108, 110, 110, 111, 113, 114; ♀♀: 109, 109, 109, 112; ○○: 108 mm; *hypopolia* ♂♂: 112, 112, 112, 113, 114; ♀♀: 109; ○○: 109, 110, 113, 113, 113, 115, 118 mm. These *albifrons* are southeastern birds, and even if some of them may be migrants from Northwest it does not appear that the southeastern birds are conspicuously smaller than the northwestern. The frontal band is more whitish in the specimens from Canada and arctic regions, more creamy in specimens from Washington, New York, Pennsylvania and Massachusetts. However, the difference is very slight and many specimens are indistinguishable. In my opinion the name *hypopolia* must be regarded as a synonym of *albifrons*, when judging from the material mentioned above, and I doubt whether an examination of larger collections will alter this conclusion.

***Hirundo rustica rustica* L.**

Hirundo rustica LINNAEUS, Syst. Nat., Ed. X, Vol. I, p. 191 (1758—Europe; type-locality restricted to Sweden).

The European Barn-Swallow.

This swallow, which is very common in Europe, has been observed only two or three times in Greenland, *viz*: an adult from Westgreenland in old times, and an adult from Sydprøven 12th June 1882; a juvenile specimen shot near Sermilik, Angmagssalik, probably also belonged to this subspecies (H. WINGE 1898, p. 274).

To these can now be added:

1. An adult bird was shot near Godthaab 27th Aug. 1910, where it was seen to circle above the houses; the skin was sent to the Zoological Museum (C. N. 8) by Mr. J. HAUPTMANN. The wing measured 127 mm, exposed culmen 8.5 mm.

***Hirundo rustica erythrogaster* Bodd.**

Hirundo erythrogaster BODDAERT, Table Pl. Enlum., p. 45 (1783—Cayenne).

The American Barn-Swallow.

This Swallow is a rare visitor to Greenland, though it has been recorded a few times, *viz*: Frederikshaab about 1828, Nanortalik ad. about 1856, Godhavn ad. about 1866, Umanak juv. about 1887, Jakobs-

havn juv. 25th Sept. 1893 (H. WINGE 1898, p. 273), Sukkertoppen (sexed as ♂) 4th June 1904 (E. L. SCHIØLER 1911, p. 79), Fiskenæs mid-May 1930 (probably this race) (K. OLDENDOW 1933, p. 162), Godthaab juv. end July 1912 (F. SALOMONSEN 1935, p. 7).

The following records can now be added:

1. A female was shot at Upernavik 24th June 1936 and by a Greenlandlander brought to F. SALOMONSEN, who as leader of "The Natural History Expedition to Northwest Greenland" visited this place on that day. The specimen was subsequently skinned; the ovary contained eggs up to a size of 1.5 mm in diameter, the plumage did not show any moult. Measurements: wing 120 mm, exposed culmen 7 mm, lateral (longest) rectrices 77 mm. The lateral tailfeathers are rather short and broad, the reddish throat is paler than in the adult birds (but not so pale as in juveniles), the upper-parts are dark metallic blue as in adults; most likely it is a one year old bird. It is now kept in the Zoological Museum.

2. A juvenile bird was shot at Frederikshaab 4th Sept. 1895; the skin was presented to the Zoological Museum (C. N. 24) by Dr. TH. N. KRABBE. The wing measures 120 mm, the outermost rectrices 69 mm, exposed culmen 9 mm.

3. A juvenile bird was shot at Sukkertoppen 1st Sept. 1900; the skin was presented to the Zoological Museum (C. N. 148) by Dr. TH. N. KRABBE. The wing measures 116 mm, the outermost rectrices 65 mm, exposed culmen 7.5 mm.

4. A juvenile bird was shot at Narssalik July 1901; the skin was sent to the Zoological Museum (C. N. 7) by Mr. NYEKJÆR. The wing measures 113 mm, the outermost rectrices 63 mm, exposed culmen 8 mm.

5. An adult bird was shot at Fiskenæs 10th June 1902; the skin was sent to the Zoological Museum (C. N. 23) by Dr. TH. N. KRABBE. The wing measures 117 mm, outermost rectrices 90 mm, exposed culmen 7.5 mm.

6. An adult male was shot at Fiskenæs 25th July 1930; the skin was sent to the Zoological Museum (C. N. 114) by Mr. JOHN MØLLER. The wing measures 118 mm, outermost rectrices 81 mm, exposed culmen 8 mm. This must no doubt be the skin to which OLDENDOW refers (1933, p. 162), when stating that two swallows "in the middle of May 1930" were seen in Fiskenæs, where one of them was shot; according to MØLLER's verbal information it was a Swallow, but he cannot say anything definite as to its subspecies.

7. A juvenile bird was shot at Igaliko near Julianehaab in Nov. 1934; the skin was sent to the Zoological Museum (C. N. 125) by Mr. JACOB OLSEN. The wing measures 116 mm, outermost rectrices 64 mm, exposed culmen 8 mm.

8. A juvenile bird was shot at Qagssiarsuk 26th Aug. 1937; the skin was sent to the Zoological Museum (C. N. 128) by J. MOTZFELDT through Mr. RAFN. The wing measures 119 mm, outermost rectrices 65 mm, exposed culmen 8 mm.

Vermivora ruficapilla ruficapilla (Wilson).

Sylvia ruficapilla WILSON, Amer. Orn., Vol. III, p. 120 (1811—near Nashville, Tennessee).

The Nashville Warbler.

This Warbler has appeared twice in Greenland, viz: a juv. at Fiske-næs 10th Oct. 1823, and a juv. at Fiske-næs 31st Aug. 1840 (H. WINGE 1898, p. 281). It breeds in North America from central Saskatchewan, Central Ontario, southern Quebec and Cap Breton Island south to Nebraska, northern Illinois, northern Pennsylvania, northern New Jersey, and Connecticut (CHECK-LIST 1931, p. 283).

To this the following new record can be added:

A juvenile bird was secured in "West Greenland" between 1890 and 1899 by Dr. TH. N. KRABBE, who presented the mummy to the Zoological Museum (C. N. 3). The wing measures 61.5 mm, exposed culmen about 8.5 mm (outer tip of bill broken off).

Vermivora celata celata (Say).

Sylvia celatus SAY, in LONG, Exped. Rocky Mts., Vol. I, p. 169 (1823—Omaha, Nebraska).

The Orange-crowned Warbler.

In North America this Warbler extends its breeding-area from Kowak River, Alaska, southeast to northern Manitoba (CHECK-LIST 1931, p. 282).

A juvenile bird was shot at Lichtenfels 14th Oct. 1906 by Mr. ANDR. HANSEN; the skin was presented to the Zoological Museum (C. N. 1) by Dr. TH. N. KRABBE. The wing measures 59 mm, exposed culmen 10.5 mm. The skin is obviously from a young bird and most probably one of the colour-variety which has the head and neck much tinged with gray and the superciliary streak and eyelids being white instead of yellowish, as mentioned by RIDGWAY (Birds of North and Middle America, Vol. II, 1902, p. 463).

The specimen mentioned above is the only one known from Greenland.

Vermivora (Helminthophila) peregrina (Wilson).

Sylvia peregrina WILSON, Amer. Orn., Vol. III, p. 83 (1811—Banks of the Cumberland river in Tennessee).

The Tennessee Warbler.

Distributed in eastern North America up to a line from the upper Yukon Valley, southern Mackenzie, northern Manitoba, Central Quebec to Anticosti Island.

An adult male in summer-dress was found dead in Narssaq in 1898; the mummy was presented to the Zoological Museum (C. N. 1) by Dr. TH. N. KRABBE. The wing measures 65.5 mm, exposed culmen 10 mm.

This record is the first and only one from Greenland.

Dendroica castanea (Wilson).

Sylvia castanea WILSON, Amer. Orn., Vol. II, p. 97 (1810—Pennsylvania).

The Bay-breasted Warbler.

This Warbler breeds in North America from east-central Alberta, central Manitoba to Newfoundland (CHECK-LIST 1931, p. 291).

A juvenile bird was shot at Narssaq near Godthaab 15th Oct. 1898; the skin was presented to the Zoological Museum (C. N. 1) by Dr. TH. N. KRABBE. The wing measures 71 mm, exposed culmen 10 mm.

The specimen mentioned above is the only one known from Greenland.

Dendroica pinus pinus (Wilson).

Sylvia pinus WILSON, Amer. Orn., Vol. III, p. 25 (1811—Georgia).

The Northern Pine Warbler.

Breeds in North America from northern Manitoba, northern Michigan, southern Ontario, southern Quebec to New Brunswick (CHECK-LIST 1931, p. 291).

A juvenile bird was shot at Godthaab 1st Oct. 1899; the skin was presented to the Zoological Museum (C. N. 1) by Dr. TH. N. KRABBE. The wing measures 69 mm, exposed culmen 10 mm.

This record is the only one known from Greenland.

***Dendroica striata* (Forster).**

Muscicapa Striata I. R. FORSTER, Philos. Trans., Vol. LXII, Art. 29 p. 406 & 428 (1772—Fort Severn, west coast of Hudson Bay).

The Black-poll Warbler.

This Warbler breeds from the timber-line in northwestern Alaska, northern Mackenzie, northern Manitoba, northern Quebec, and Newfoundland south to northern British Columbia, Michigan, northern Maine, and the mountains of New York, Vermont, and New Hampshire (CHECK-LIST 1931, p. 291).

In Greenland a specimen was shot in 1853 near Godthaab (H. WINGE 1898, p. 280), but this skin exists no longer.

To this the following new records can be added:

1. A juvenile bird was collected in Isua in Lichtenauvfjord 14th Oct. 1911; the mummy was presented to the Zoological Museum (C. N. 2) by Reverend RÜTTEL. The wing measures 71 mm, exposed culmen 10 mm.

2—3. 2 juvenile birds were collected, also at the end of October 1911; the mummies were likewise sent to the Zoological Museum (C. N. 3 and 4) by Reverend RÜTTEL. The wings measures 70 and 72 mm resp., exposed culmens 9.5 and 10 mm resp.

4. A juvenile bird was secured by Mr. JACOB BERTELSEN near Isua copper-mine in Ivigtut 15th Oct. 1911. The mummy was presented to the Zoological Museum (C. N. 1) by Engineer NYBOE. The wing measures 70 mm, exposed culmen 9.5 mm.

5. A juvenile female was captured 18th Sept. 1919 in an uninhabited greenlander's house near the settlement of Narssarmiut in the Sukker-toppen District; the skin was sent by Mr. NIELSEN to SCHIÖLER, with whose collection it came to the Zoological Museum (C. N. 5). The wing measures 72 mm, exposed culmen 10 mm.

***Dendroica coronata* (L.).**

Motacilla coronata LINNAEUS, Syst. Nat., Ed. XII, Vol. I, p. 333 (1766—Pennsylvania).

The Myrtle Warbler.

The Myrtle Warbler is an American, boreal species breeding to the North to northwestern Alaska, northern Mackenzie, northern Manitoba and central Quebec, wintering in southern U. S. and in Middle America. It has been met with in Greenland the following times: Fiskenes ♂ 21st May 1841, Julianehaab ♂ about 1847, Godhavn ♂ 31st July 1878, Nanortalik ♂ 23rd May 1880 (H. WINGE 1898, p. 281), Agpâmiut in Sukker-toppen District 15th Oct. 1931 (K. OLDENDOW 1933, p. 167).

The following new record is added:

A female (or a young bird) was shot at Kangeq in Godthaab District 28th Oct. 1937. The wing measures 74 mm, bill from skull 14 mm, from anterior margin of nostrils 7 mm. The bird is kept in the bird-collection of the seminary in Godthaab and by the courtesy of Director K. OLDENDOW was sent to F. SALOMONSEN for examination.

Seiurus aurocapillus (L.).

Motacilla aurocapilla LINNAEUS, Syst. Nat., Ed. XII, Vol. I, p. 334 (1766—Pennsylvania).

The Oven-bird.

Distributed as a breeding-bird in North America from southwestern Mackenzie, northern Ontario, central Quebec, and Newfoundland right down to North Carolina.

An adult bird, unsexed, was shot at Narssaq near Godthaab 15th Oct. 1933; the skin was sent to the Zoological Museum (C. N. 1) by Mr. JOHN MØLLER. The wing measures 79 mm, exposed culmen 12.5 mm.

This record is the first and only one known from Greenland.

Compsothlypis americana pusilla (Wilson).

Sylvia pusilla WILSON, Amer. Ornith., Vol. IV, p. 17 (1811—Philadelphia, Pennsylvania).

The Northern Parula Warbler.

Distributed in North America as breeding-bird from eastern Nebraska, northern Minnesota central Ontario, Anticosti Island, and Cape Breton Island south to Texas, Louisiana and Maryland (CHECK-LIST 1931, p. 284). This bird has appeared only once in Greenland, viz: "South-west Greenland" ♂ about 1857 (H. WINGE 1898, p. 283). To this record the following can be added:

An adult male was found dead at Fiskenes in Aug. 1900. The skin, the head almost destroyed, was presented to the Zoological Museum (C. N. 2) by Dr. TH. N. KRABBE. Wing measures 61 mm; with intermixture of chestnut on chest.

Turdus musicus coburni Sharpe.

Turdus coburni SHARPE, Bull. Brit. Ornith. Club, Vol. XII, p. 28 (1901—Iceland).

The Iceland Redwing.

The Redwings previously met with in Greenland belong to this race, which breeds in Iceland and the Faroe Islands. The Iceland Red-

wing is distinguished from the typical Scandinavian form by its darker, warmer brown upper-parts, the larger and darker spots on underparts, the darker red on flanks and by the larger proportions. The following wing-measurements are given by F. SALOMONSEN (1935 a, p. 151) based on a large number of specimens:

T. m. musicus: ♂♂ 115—121 mm, ♀♀ 112—120 mm.
 - - *coburni*: ♂♂ 120—131 mm, ♀♀ 119—126 mm.

The following records have been made from Greenland¹⁾: Western Greenland 1845, Frederikshaab 28th Oct. 1845 (H. WINGE 1898, p. 283) (coloured as *coburni*; wing 119 mm), Angmagssalik 20th Oct. 1904 (two specimens), and *ibid.* 31st Oct. 1906 (J. PETERSEN 1908, p. 19) (all three specimens from Angmagssalik are coloured as typical *coburni*; wing 121, 122, 123 mm), Julianehaab ♀ ad. 9th Jan. 1916, and *ibid.* ♂ juv. 29th Febr. 1916 (O. HELMS and E. L. SCHIØLER 1917, p. 175) (the first-mentioned being typical *coburni* in coloration, the second strongly resembling *musicus*, but wing-length (121 mm) unfortunately not decisive; wing 122, 121 mm), Frederiksdal in Julianehaab District ♀ spring 1925, Nûk at Augpilagtoq in Julianehaab District ♂ 25th Jan. 1926 (K. OLDENDOW 1933, p. 168; cf. also H. SCHEEL 1927, p. 79).

The following records are new:

1. An adult bird shot at Frederiksdal in Julianehaab District autumn 1933 and by Dr. LAURENT CHRISTENSEN sent to FINN SALOMONSEN who forwarded it to the Zoological Museum. The coloration is exactly like *coburni*; the wing measures 126 mm, culmen (from feathers) 16 mm.

2. A specimen was found dead at Julianehaab autumn 1934 and is now kept in the school ("Efterskolen") in Julianehaab, where it was examined by F. SALOMONSEN. The wing measures 122 mm; coloration as *coburni*.

3. A specimen was found dead at Igaliko in 1925 by E. L. SCHIØLER, with whose collection it came to the Zoological Museum (C. N. 630). The wing measures 130 mm, the bill was broken²⁾.

¹⁾ Notes in brackets are the result of our recent examination of the specimens in the Zoological Museum.

²⁾ *Turdus merula merula* L. from Sydprøven, mentioned by O. HELMS & E. L. SCHIØLER (1917, p. 175) is now kept in the Zoological Museum; it was shot 29th Nov. 1915.

Turdus pilaris L.

Turdus pilaris LINNAEUS, Syst. Nat., Ed. X, Vol. I, p. 168 (1758—Europe; type-locality restricted to Sweden).

The Fieldfare.

This palæarctic, high-boreal Thrush does not breed westwards of Scandinavia, and the occurrence of the Fieldfare in western Greenland is, therefore, of considerable interest. It is recorded from several localities on the islands in the North Atlantic. In the Faroes it is a regular passage-migrant and winter-visitor (F. SALOMONSEN 1935 a, p. 149), in Iceland it is an infrequent and irregular visitor (B. SÆMUNDSSON 1936, p. 131), from Spitsbergen it has been recorded four times (S. JOHNSEN 1933, p. 29), and from Jan Mayen it is recorded once (a flock, of which 4 were secured, 4th-5th May 1883) (J. L. C. MUSTERS 1930, p. 216). From Greenland only one record has been made until now, *viz*: a specimen (sexed as ♂) shot at Fiskenæs 24th Nov. 1925 (H. SCHEEL 1927, p. 76; K. OLDENDOW 1933, p. 169). Already now some new records can be added:

1—4. In the latter days of January 1937 a real irruption of Fieldfares took place in the southernmost parts of West Greenland and four specimens were captured and by Dr. LAURENT CHRISTENSEN sent to FINN SALOMONSEN, who forwarded them to the Zoological Museum. One specimen, no doubt a young ♂, was shot at Sydprøven in Julianehaab District 28th Jan. 1937; the wing measures 148 mm, culmen (from feathers) 18 mm; another specimen from the same date and locality, an adult ♂, measures: wing 151 mm, culmen 18 mm. A specimen, a ♂ juv., was shot at Lichtenau in Julianehaab District 30th Jan. 1937; the wing measures 144 mm, culmen 17.5 mm. The fourth specimen, a ♂ juv., was shot at Nanortalik in Julianehaab District 31st Jan. 1937; the wing measures 148 mm, culmen 18 mm. The localities given are not situated very far from each-other, and they show that the invasion was restricted to the southern parts of Julianehaab District and did not even reach the town Julianehaab.

The reason for this irruption of Fieldfares, which is one of the rarest visitors to Greenland, may be connected with the recent change of climate in Greenland, which has *e. g.* given rise to a considerable increase in the air-temperature, especially in winter. So the deviations of temperature from the mean for 1876—1925 at Jakobshavn in winter is 4.0° C. for 1923—32, whereas in the period 1883—1892 it was —1.1° C., *i. e.* the recent winters have been more than 5° C. warmer than those registered 50 years ago (cf. A. S. JENSEN 1939, p. 35). This amelioration of the climatic conditions in Greenland has caused a considerable northward

extension of several marine organisms, and is probably also the cause of the more frequent occurrence of a number of birds in Greenland in recent years (cf. f. inst. the Golden Plover p. 26).

5. In East Greenland too the irruption of the Fieldfare was traceable in the winter of 1936—37, since a specimen, unsexed, was shot as early as 1st Dec. 1936 in Angmagssalik; the skin was presented to the Zoological Museum (C. N. 150) by Mr. GITZ JOHANSEN. Wing measures 140 mm, exposed culmen 19 mm.

Turdus guttatus faxoni (Bangs and Penard.)

Hylocichla guttata faxoni BANGS and PENARD, Auk, Vol. XXXVIII, No. 3, p. 433 (1921—Shelburne, New Hampshire).

The Eastern Hermit Thrush.

This subspecies has been met with only once in Greenland, viz: Frederikshaab 2nd May 1923 (R. J. OLSEN 1925, p. 41).

To this the following record can now be added:

A specimen was shot at Nanortalik in May 1908; the mummy was presented to the Zoological Museum (C. N. 1) by Dr. TH. N. KRABBE. Wing 197 mm, exposed culmen 14 mm.

Turdus migratorius migratorius L.

Turdus migratorius LINNAEUS, Syst. Nat. Ed. XII, Vol. I, p. 292 (1766—South Carolina).

The Eastern American Robin.

This subspecies breeds throughout Canada from the timber-line south to Cook Inlet, Alaska, Kansas, Illinois, Indiana, Ohio, Pennsylvania, and New Jersey; it has appeared twice in West Greenland, viz: Qôrnoq near Godthaab ♂ about 1865, Sukkertoppen ♀ about 1881 (H. WINGE 1898, p. 284).

To this the third record can now be added:

A female was shot at Grædefjord 26th Sept. 1899; the skin was sent to the Zoological Museum (C. N. 3) by Dr. TH. N. KRABBE. Wing 127 mm, exposed culmen 16.5 mm.

Pinicola enucleator leucura (Müller).

Loxia leucura P. L. S. MÜLLER, Natursyst. Suppl., p. 150 (1776—Canada).

The American Pine Grosbeak.

A young bird, presumably a female, was shot at Nordprøven, Julianehaab District 23rd Oct. 1919; head, one wing, tail and a piece

of the mantle were secured by Mr. HENDRIK LUND and through Mr. JOHN PETERSEN came to the Zoological Museum (C. N. 17).

This is the first time that this species is recorded from Greenland. The species is circumpolar, being distributed from the wooded districts down to 65°, and is divided into numerous subspecies. The subspecies which has its breeding sites nearest the west coast of Greenland is *Pinicola enucleator leucura* (Müller), which breeds from northwestern Mackenzie, northern Quebec, Labrador and Newfoundland to Manitoba, New Hampshire, Maine, Central New Brunswick, southern Nova Scotia, and Cape Breton Island (CHECK-LIST 1931, p. 322). It is natural, therefore, to refer the remnants available to this subspecies; as however the specimen is somewhat defective, and the bird is a young one, evidently in its first winter-dress, a safe racial identification can hardly be made. The wing measures 109 mm, exposed culmen 13.5 mm. The wing length shows that it cannot be referred to *P. e. alascensis* RIDGWAY, which lives in northwestern North America, as the wing length of the latter is greater, for females ranging between 114.05 and 120.40 mm; According to the dimensions the remnants we have may be referred to the European typical form. The difference in the general colour of wings and tail, which are said to be grayish brown in the typical form and much darker in *P. e. leucura* (RIDGWAY *l. c.*) I have not been able to verify in the collection which has been at disposal.

***Loxia curvirostra curvirostra* L.**

Loxia curvirostra LINNAEUS, Syst. Nat., Ed. X, p. 171 (1758—Sweden).

The Common Crossbill.

In a previous paper F. SALOMONSEN (1935, p. 6) described the first records of the European Crossbill in Greenland, adding that a specimen of the American race (*L. c. pusilla* Gloger) was secured once in Western Greenland, *viz*: autumn 1928, at Kangâmiut, mentioned by K. OLDENDOW (1933, p. 177). SALOMONSEN continues: "However, I do not know, whether this bird belongs to the form *pusilla* or to *curvirostra*, as I have not examined the bird myself, and OLDENDOW gives no reason, why he has referred it to the American form." By the courtesy of Director K. OLDENDOW the bird, which is kept in the Godthaab seminary, was sent to F. SALOMONSEN for examination. It turned out to be a young male in golden-orange plumage of the European race (*L. c. curvirostra*). The wing measures 99.5 mm, exposed culmen 18 mm. The measurements of the two races are as follows:

L. c. curvirostra (♂♀): wing 92—100 mm, bill 16—20 mm.
 - *pusilla* (♂♀): - 84—90 mm, - 15—17 mm.

Thus, the specimen in question belongs to the typical form.

This is the third record of *L. c. curvirostra* in Greenland; a specimen was captured previously at Napassoq in Sukkertoppen District 5th Aug. 1933 and another between Angmagssalik and Kangerdlugssuaq on the East coast 1930—31 (cf. F. SALOMONSEN 1935, p. 6).

***Loxia leucoptera* Gml.**

Loxia leucoptera GMELIN, Syst. Nat. Vol. I, part 2, p. 844 (1789—Hudson Bay and New York).

The White-winged Crossbill.

This species which breeds in North America from the limit of trees in northwest Alaska to northern Quebec, have appeared some times in Greenland; thus an adult male was recorded from the southern part of the east coast, and three specimens (juveniles or females) were reported from Julianehaab about 1856, and an adult male from "West Greenland" about 1857.

To these a new record can now be added:

An adult male was found dead in a dried up condition near Frederiksdal in spring (May?) 1900 and was brought to the missionary ZUCKER, who presented it to Dr. G. MELDORF, whose widow handed it over to the Zoological Museum (C. N. 30). The plumage was almost eaten up by moths, but the red feathers left show that it was an adult male. The identification was made before the devastation by the moths.

***Melospiza lincolni lincolni* (Aud.).**

Fringilla Lincolnii AUDUBON, Birds Amer., Vol. II, p. 193, (1834—Labrador).

Lincoln's Sparrow.

Breeds from the Kowak and Yukon valleys, Alaska, to southern Mackenzie, northern Manitoba, northern Quebec and New Foundland (CHECK-LIST 1931, p. 350). Previously this species was not recorded from Greenland; now the following record is available:

An adult bird, unsexed, was captured at Tuapait near Nanortalik 1st Sept. 1901. The skin was secured by Dr. G. MELDORF, whose widow handed it over to the Zoological Museum (C. N. 1). The wing measures 63 mm, but it has been longer, exposed culmen 11 mm. Unfortunately, the skin is much ravaged by moths, but the other American subspecies *M. l. gracilis* (Kittlitz) presumably can be left out of consideration.

Dolichonyx oryzivorus (L.).

Fringilla oryzivora LINNAEUS, Syst. Nat., Ed. X, Vol. I, p. 179 (1758—South Carolina).

The Bobolink.

This species, which in North America breeds from southeastern British Columbia to southern Quebec, and Cape Breton Island, has appeared once in Greenland, viz: in Arsuk in 1898 (O. HELMS 1899, p. 237). Now the following new record is available:

A male was shot at Godthaab 17th Oct. 1929. Through the taxidermist JOHN MØLLER the skin came to Dr. A. JØRGENSEN, who presented it to the Zoological Museum (C. N. 2). The wing measures 91 mm, exposed culmen 13.5 mm.

Icterus galbula (L.).

Coracias Galbula LINNAEUS, Syst. Nat., Ed. 10, Vol. I, p. 108 (1758—America, restricted to Virginia).

The Baltimore Oriole.

A very interesting record. A young male was shot at Sukkertoppen 27th Sept. 1936 and by Mr. JULIUS OLSEN sent to Director K. OLDENDOW, who handed it over to F. SALOMONSEN for examination. It is now kept in the bird-collection of the Godthaab seminary. It is figured in Fig. 7.

The specimen in question has a blackish spot on the throat like many other Orioles. As it might be a young male of the nearly allied BULLOCK'S Oriole (*I. bullockii* (Swainson)) it was sent to Dr. HERBERT FRIEDMANN, U. S. National Museum for exact identification. We are much indebted to Dr. FRIEDMANN for kindly examining the bird and confirming the fact that it belongs to *I. galbula*.

The Baltimore Oriole breeds in the north to central Alberta, central Saskatchewan, southern Manitoba, Ontario, New Brunswick and Nova Scotia, the winter is spent in Central America south to Colombia. It has been met with once at York Factory in northern Manitoba. The Greenland record, thus, must be considered with more than usual interest, the locality being situated more than 1700 km from the nearest breeding-place.

Perhaps *I. galbula* and *I. bullockii* are conspecific, and in this case our bird should be called *I. galbula galbula*. Although the males in summer-plumage are very different in these two Orioles, especially in the color-pattern of head and wing, they are known to interbreed. This has recently been demonstrated by G. M. SUTTON (1938, p. 1), as regards

Oklahoma. From SUTTON's colour-plate it appears distinctly that the large differences between the two species are bridged by all intermediate stages. No doubt it will turn out that they hybridize in other places in the large areas in the middle West where their breeding-ranges overlap. Probably the case is somewhat similar to that in the Flickers (*Colaptes auratus* (L.) and *C. cafer* (Gml.)) (cf. P. A. TAVERNER 1934, p. 34).

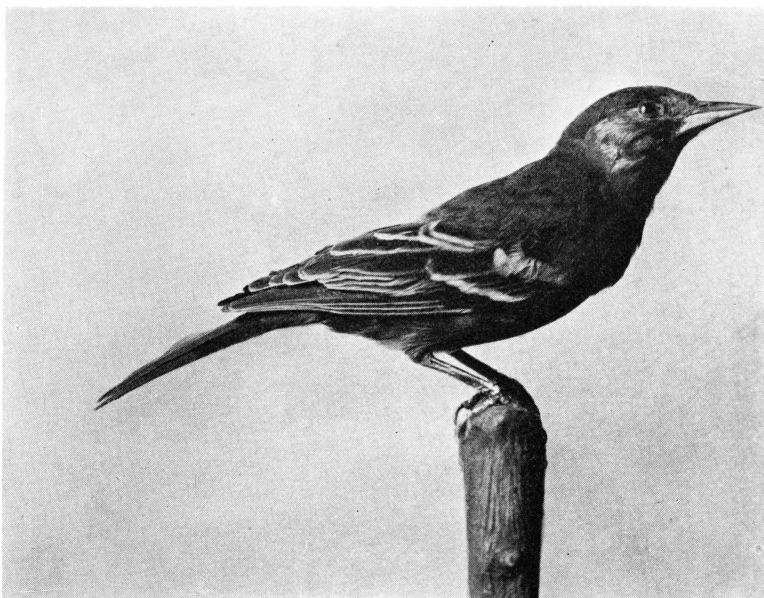


Fig. 7. *Icterus galbula* (L.), Sukkertoppen, 27th Sept. 1936, ♂ juv.; belonging to the Godthaab seminary. First Greenland record.

***Xanthocephalus xanthocephalus* (Bp.).**

Icterus xanthocephalus BONAPARTE, Journ. Acad. Nat. Sci. Philadelphia, Vol. V, p. 223 (1826—Nebraska).

The Yellow-headed Blackbird.

This species, which in North America has its breeding places from southern British Columbia to the east side of Hudson Bay, appeared once before in South-Greenland, a female being shot at Nanortalik 2nd Sept. 1840 (H. WINGE 1898, p. 296).

To this the following new record can be added:

A juvenile male was shot at Sârdloq near Godthaab 7th Aug. 1900. The skin was presented to the Zoological Museum (C. N. 2) by Dr. TH. N. KRABBE. The wing measures 135 mm, exposed culmen 20 mm.

***Sturnus vulgaris vulgaris* L.**

Sturnus vulgaris LINNAEUS, Syst. Nat., Ed. X, p. 167 (1758—Sweden).

The Starling.

The European Starling is a rare spring and autumn visitor to Greenland. It has been captured 9 times in West Greenland (Godthaab 1851, Julianehaab Nov. 1904, Julianehaab early spring 1905 (two specimens), Nanortalik 1st Nov. 1909, Sarfánguaq autumn 1911, Julianehaab 10th Sept. 1925, Fiskenæs 7th Nov. 1925, Godthaab 13th May 1927, Augpilagtoq at Nanortalik 2nd Sept. 1932) and 7 times in East Greenland (27th Oct. 1896, 30th Oct. 1898, early May 1901, Dec. 1906, Sept.—Oct. 1914, spring 1926, 1930—31, all in Angmagssalik District); cf. F. SALOMONSEN 1935, p. 3.

The following record may now be added:

An unsexed specimen in fresh-moulted dress, no doubt a young bird, was captured in the autumn of 1934 at Frederiksdal in Julianehaab District. The wing measures 129 mm, bill (from skull) 27.5 mm. The bird was received by Dr. LAURENT CHRISTENSEN, who kindly presented it to F. SALOMONSEN. It is now in the Zoological Museum.

SUMMARY

This paper deals with records of birds rare in or quite new to Greenland, forming a continuation of the list of records published some years ago (F. SALOMONSEN 1935) and bringing the records up to the year 1941. The list comprises some specimens sent to the Zoological Museum of Copenhagen and not noted previously, others sent to F. SALOMONSEN for examination in recent years. The greater part of the specimens here described now belong to the Zoological Museum of Copenhagen. Altogether 343 new records have been described in this paper, divided on 82 species and subspecies. Previously these 82 species have been recorded 475 times from Greenland; so the new records almost double our knowledge about the occurrence of these birds in Greenland. No less than 21 species, here described, are entirely new to Greenland, *viz*: *Rallus limicola limicola* Vieill., *Tringa melanoleuca* (Gml.), *Tringa macularia* L. (two records), *Recurvirostra avosetta americana* Gml., *Calidris bairdi* (Coues) (two records), *Larus canus canus* L. (three records), *Larus argentatus kumlieni* Brewster (two records), *Zenaidura macroura carolinensis* (L.), *Ardea herodias herodias* L., *Platalea leucorodia leucorodia* L., *Diomedea melanophrys* Temm., *Coccyzus erythrophthalmus* (Wilson) (two records), *Petrochelidon albifrons albifrons* (Rafinesque), *Vermivora celata celata* (Say), *Vermivora peregrina* (Wilson), *Dendroica castanea* (Wilson), *Dendroica pinus pinus* (Wilson), *Seiurus aurocapillus* (L.), *Pinicola enucleator leucura* (Müll.), *Melospiza lincolni lincolni* (Aud.), *Icterus galbula* (L.). The following birds have been met with previously only once or twice in Greenland, but new records are added in this paper: *Podiceps griseigena griseigena* (Bodd.), *Charadrius dominicus fulvus* Gml., *Tringa flavipes* (Gml.), *Larus minutus* Pall., *Larus argentatus thayeri* Brooks, *Vermivora ruficapilla ruficapilla* (Wilson), *Dendroica striata* (Forster) (five new records), *Compothlypis americana pusilla* (Wilson), *Turdus pilaris* L. (five new records), *Turdus guttatus faxoni* Bangs and Penard, *Turdus migratorius migratorius* L., *Loxia curvirostra curvirostra* L., *Dolichonyx oryzivorus* (L.), *Xanthocephalus xanthocephalus* (Bp.). The following species have been recorded previously some times

from Greenland, but the number of records published in this paper far exceeds the number hitherto known: *Oceanodroma leucorhoa leucorhoa* (Vieill.), *Charadrius apricarius altifrons* Brehm, *Calidris fuscicollis* (Vieill.), *Uria aalge aalge* (Pont.), *Eremophila alpestris alpestris* (L.).

The following schema gives a general view of all the Greenland records of the 82 species dealt with in this paper, both the records previously known and those published here; the schema may also be used as an index.

	Described Page	Previous Greenland Records	New Greenland Records	Totally
<i>Anas crecca crecca</i> L.	5	27	15	42
— — <i>carolinensis</i> Gml.	7	11	1	12
— <i>acuta</i> L.	8	17	4	21
— <i>penelope</i> L.	9	24	6	30
<i>Cygnus cygnus</i> (L.)	11	21	3	24
<i>Aythya marila marila</i> (L.)	12	6	1	7
<i>Melanitta fusca fusca</i> (L.)	12	2	1	3
<i>Branta leucopsis</i> (Bechst.) ¹⁾	13	1	1	2
<i>Podiceps auritus</i> (L.)	14	13	4	17
— <i>griseigena griseigena</i> (Bodd.) ...	14	1	1	2
— — <i>holboelli</i> Reinhardt ...	15	16	5	21
<i>Oceanodroma leucorhoa leucorhoa</i> (Vieill.)	16	8	29	37
<i>Crex crex</i> (L.)	19	14	3	17
<i>Rallus limicola limicola</i> Vieill.	20	0	1	1
<i>Porzana porzana</i> (L.)	20	4	2	6
— <i>carolina</i> (L.)	21	6	2	8
<i>Fulica atra atra</i> L.	21	8	1	9
— <i>americana</i> Gml.	21	3	3	6
<i>Vanellus vanellus</i> (L.)	22	14	2	16
<i>Squatarola squatarola squatarola</i> L.	23	17	9	26
<i>Charadrius apricarius altifrons</i> Brehm.	24	26	32	58
— <i>dominicus dominicus</i> (Müll.) ...	28	15	15	30
— — <i>fulvus</i> Gml.	29	1	1	2
<i>Numenius phaeopus islandicus</i> Brehm.	30	42	38	80
— — <i>hudsonicus</i> Latham ...	33	5	2	7
<i>Tringa flavipes</i> (Gml.)	34	1	1	2
— <i>melanoleuca</i> (Gml.)	34	0	1	1
— <i>macularia</i> L.	35	0	2	2
<i>Recurvirostra avosetta americana</i> Gml.	35	0	1	1
<i>Calidris melanotos</i> (Vieill.)	36	7	3	10
— <i>fuscicollis</i> (Vieill.)	37	7	10	17
— <i>alpina schinzii</i> (Brehm.)	38	2	2	4
— <i>bairdi</i> (Coues)	39	0	2	2

¹⁾ The records, mentioned, apply only to West Greenland, as this species breeds in several localities in East Greenland.

	Described Page	Previous Greenland Records	New Greenland Records	Totally
<i>Capella gallinago delicata</i> (Ord).....	40	} 5 ¹⁾ {	7	} 18
— — <i>jaeroeensis</i> (Brehm)	42		3	
— — <i>gallinago</i> (L.).....	43		3	
<i>Xema sabini</i> (Sabine) ²⁾	44	13	13	26
<i>Larus minutus</i> Pall.....	45	1	1	2
— <i>ridibundus ridibundus</i> L.	45	3	3	6
— <i>canus canus</i> L.	46	0	3	3
— <i>argentatus thayeri</i> Brooks	47	1	1	2
— — <i>kumlieni</i> Brewster.....	49	0	2	2
— — <i>argentatus</i> Pont.....	51	3	3	6
— <i>fuscus graellsi</i> Brehm	52	1	0 ³⁾	1
<i>Rhodostethia rosea</i> (Macgillivray).....	52	12	3	15
<i>Stercorarius skua skua</i> (Brünnich)	53	15	1	16
<i>Uria aalge aalge</i> (Pont.).....	54	11	19	30
<i>Zenaidura macroura carolinensis</i> (L.).....	56	0	1	1
<i>Ardea cinerea cinerea</i> L.	56	8	2	10
— <i>herodias herodias</i> L.	57	0	1	1
<i>Platalea leucorodia leucorodia</i> L.....	57	0	1	1
<i>Diomedea melanophrys</i> Temm.....	59	0	1	1
<i>Morus bassanus bassanus</i> (L.).....	60	2	2	4
<i>Asio flammeus flammeus</i> (Pont.).....	61	18	15	33
<i>Coccyzus erythrophthalmus</i> (Wilson)	62	0	2	2
<i>Sphyrapicus varius varius</i> (L.)	63	3	1	4
<i>Eremophila alpestris alpestris</i> (L.).....	63	3	10	13
<i>Petrochelidon albifrons albifrons</i> (Rafinesque)	64	0	1	1
<i>Hirundo rustica rustica</i> L.	66	3	1	4
— — <i>erythrogaster</i> Bodd.	66	8	8	16
<i>Vermivora ruficapilla ruficapilla</i> (Wilson) ..	68	2	1	3
— <i>celata celata</i> (Say).....	68	0	1	1
— <i>peregrina</i> (Wilson)	69	0	1	1
<i>Dendroica castanea</i> (Wilson).....	69	0	1	1
— <i>pinus pinus</i> (Wilson)	69	0	1	1
— <i>striata</i> (Forster).....	70	1	5	6
— <i>coronata</i> (L.).....	70	5	1	6
<i>Seiurus aurocapillus</i> (L.).....	71	0	1	1
<i>Compothlypis americana pusilla</i> (Wilson) ..	71	1	1	2
<i>Turdus musicus coburni</i> Sharpe	71	8	3	11
— <i>merula merula</i> L.....	72	1	0 ⁴⁾	1
— <i>pilaris</i> L.....	73	1	5	6
— <i>guttatus faxoni</i> Bangs & Penard ...	74	1	1	2

¹⁾ The skins, already described from Greenland of the different *Capella gallinago* forms have been re-examined and are united with the new records under the heading "New Greenland Records". The remaining records could not be divided on the three races, as the statements in the literature are indefinite or erroneous.

²⁾ The records, mentioned, apply only to Southwest Greenland (north to Sukkertoppen), as this species is a regular passage-migrant in Northwest Greenland.

³⁾ No new records of this species, but new informations are published on an old record.

⁴⁾ No new record of this species, but new informations are published on an old record.

	Described Page	Previous Greenland Records	New Greenland Records	Totally
<i>Turdus migratorius migratorius</i> L.	74	2	1	3
<i>Pinicola enucleator leucura</i> (Müll.)	74	0	1	1
<i>Loxia curvirostra curvirostra</i> L.	75	2	1	3
— <i>leucoptera leucoptera</i> Gml.	76	4	1	5
<i>Melospiza lincolni lincolni</i> (Aud.)	76	0	1	1
<i>Dolichonyx oryzivorus</i> (L.)	77	1	1	2
<i>Icterus galbula</i> (L.)	77	0	1	1
<i>Xanthocephalus xanthocephalus</i> (Bp.)	78	1	1	2
<i>Sturnus vulgaris vulgaris</i> L.	79	16	1	17
Totally...		475	343	818

APPENDIX

Turdus musicus musicus L.

Turdus musicus LINNÆUS, Syst. Nat., Ed. X, Vol. I, p. 169 (1758—Europe; type locality restricted to Sweden).

The Scandinavian Redwing.

The subspecies was not hitherto seen in Greenland where only the Iceland Redwing (*T. m. coburni* Sharpe) was known previously, see p. 71, on which it is stated that the European subspecies which is distributed as a breeding bird in North Europe and North Asia is easily distinguishable by a considerably smaller wing length, which in the males lies between 115 and 121 mm, in the females between 112 and 120 mm.

The present specimen, an unsexed skin of a young bird, was sent to the Zoological Museum from the Scoresby Sound Station by Mr. JOHAN PETERSEN, manager of the settlement. The bird was killed by a young Greenlander with a stone on the 6th of October 1934 near the houses. As the measurements of the wings are 114 and 115 mm, the specimen is referable to the typical race.

LITERATURE

- BERTELSEN, A. 1921: Fuglene i Umanaq Distrikt. — Meddelelser om Grønland, Vol. 62.
- CHAPMAN, F. S. 1932: The British Arctic Air Route Expedition. Appendix VI: Some Field-Notes on the Birds of East Greenland. — The Geographical Journal, Vol. 79.
- CHECK-LIST etc. 1931: Check-list of North American Birds, prepared by a Committee of the American Ornithologists' Union, Ed. 4. — Lancaster, Pa.
- DEGERBØL, M. & U. MØHL-HANSEN 1935: Birds (Aves), in The Scoresby Sound Committee's 2nd East Greenland Expedition in 1932 to King Christian IX's Land. — Meddelelser om Grønland, Vol. 104, Nr. 18.
- DEMENTIEV, G. 1939: On the Palæarctic Forms of the Grey Plover (*Squatarola squatarola* (L.)). — The Ibis.
- FREUCHEN, P. 1921: Fuglelivet i Nordvestgrønland. — Dansk Ornithologisk For- enings Tidsskrift, Vol. 15.
- HARTERT, E. 1912—1921: Die Vögel der paläarktischen Fauna, Vol. 2. — Berlin. — & F. STEINBACHER 1938: Die Vögel der paläarktischen Fauna; Ergänzungsband, Heft 6—7. — Berlin.
- HELMS, O. 1899: Ornithologiske Meddelelser fra Grønland. — Vidensk. Meddelelser fra den naturh. Foren. i København.
- 1904: Fortsatte ornithologiske Meddelelser (1903) fra Grønland. — Vidensk. Meddelelser fra den naturh. Foren. i København.
- 1909: Nye Arter for Østgrønland. — Dansk Ornith. Foren. Tidsskrift, Vol. 4.
- 1926: The Birds of Angmagssalik. — Meddelelser om Grønland, Vol. 58, Nr. 4.
- & E. L. SCHIØLER 1917: Om nogle for Grønlands Øst- og Vestkyst nye og sjældne Arter. — Dansk Ornith. Foren. Tidsskrift, Vol. 11.
- HØRRING, R. 1937: Birds Collected on the Fifth Thule Expedition. — Report of the Fifth Thule Expedition 1921—24, Vol. 2, No. 6.
- JENSEN, A. S. 1939: Concerning a Change of Climate during Recent Decades in the Arctic and Subarctic Regions, from Greenland in the West to Eurasia in the East, and Contemporary Biological and Geophysical Changes. — Kgl. Danske Videnskabernes Selskabs Biologiske Meddelelser, Vol. 14, Nr. 8.
- JOHNSEN, S. 1933: Notes on the Birds of Svalbard (Bear Island and Spitsbergen). — Bergens Museums Årbok 1933, Naturvidenskapelig Rekke Nr. 3.
- JOURDAIN, F. C. R. 1929: On the Type of *Larus affinis* Reinhardt. — Novitates Zoologicae, Vol. 35.
- KOLTHOFF, G. 1903: Bidrag til kännedom om norra polartrakternas däggdjur och fåglar. — Kgl. Svenska Vetenskaps-Akademiens Handlingar, Vol. 36, Nr. 9.
- MANNICHE, A. L. V. 1910: Nordøst-Grønlands Fugle. — Dansk Ornith. Foren. Tids- skrift, Vol. 5.

- MEINERTZHAGEN, R. 1935: The Races of *Larus argentatus* and *Larus fuscus*; with special Reference to Herr B. Stegmann's Recent Paper on the Subject. — The Ibis.
- MUSTERS, J. L. C. 1930: Fuglefaunaen på Jan Mayen. — Norsk Ornithologisk Tidsskrift, Vol. 3, Nr. 11.
- OBERHOLSER, H. C. 1919: A new Cliff Swallow from Canada. — The Canadian Field Naturalist, Vol. 35.
- OLSEN, R. J. 1925: Sumpdrossel, *Turdus pallasii* Cabanis, ny for Grønland. — Dansk Ornith. Foren. Tidsskrift, Vol. 19.
- OLDENDOW, K. 1933: Fugleliv i Grønland. — Det Grønlandske Selskabs Aarskrift.
- PEDERSEN, A. 1930: Fortgesetzte Beiträge zur Kenntnis der Säugetier- und Vogel-fauna der Ostküste Grönlands. — Meddelelser om Grønland, Vol. 77.
- 1934: Die Ornis des mittleren Teiles der Nordostküste Grönlands. — Meddelelser om Grønland, Vol. 100, Nr. 11.
- PETERS, J. L. 1934: Check-List of Birds of the World, Vol. 2. — Cambridge, Mass.
- PETERSEN, J. 1908: Ornithologiske Jagttagelser fra Angmagssalik i Aarene 1902—08; bearbejdede og sammenstillede af O. HELMS. — Dansk Ornith. Foren. Tidsskrift, Vol. 3.
- RAFN, AA. 1933: Lidt om Fuglene i og omkring Julianehaab. — Dansk Ornith. Foren. Tidsskrift, Vol. 27.
- SALOMONSEN, F. 1931: Mosehornugle, *Asio flammeus flammeus* i Nordgrønland. — Dansk Ornith. Foren. Tidsskrift, Vol. 25.
- 1935: Some Records on Birds New or Rare to Greenland. Miscellaneous Notes on Greenland Ornithology II. — Meddelelser om Grønland, Vol. 93, Nr. 6.
- 1935 a: Aves. — Zoology of the Faroes, No. 64; Copenhagen.
- 1935 b: Vibe, *Vanellus vanellus*, og Smaaspove, *Numenius phaeopus islandicus*, fra Angmagssalik, førstnævnte ny for Østgrønland. — Dansk Ornith. Foren. Tidsskrift, Vol. 29.
- SCHEEL, H. 1927: Nathejre, *Nycticorax griseus*, og Sjagger, *Turdus pilaris*, nye for Grønland, med Bemærkninger om forskellige sammesteds sjældne Arter. — Dansk Ornith. Foren. Tidsskrift, Vol. 21.
- SCHIÖLER, E. L. 1910: *Podiceps griseigena major*, Temm. & Schl. og *Tringa maculata*, Vieill. skudte paa Island. — Dansk Ornith. Foren. Tidsskrift, Vol. 5.
- 1911: Om nogle for Grønlands Fuglefauna sjældne samt to nye Arter, *Chaulelasmus streperus* (L.) og *Passerella iliaca* (Merrem) *typica*. — Dansk Ornith. Foren. Tidsskrift, Vol. 6.
- 1925: Danmarks Fugle, med Henblik paa de i Grønland, paa Færøerne og i Kongeriget Island forekommende Arter, Vol. 1. — København.
- 1926: Danmarks Fugle, med Henblik paa de i Grønland, paa Færøerne og i Kongeriget Island forekommende Arter, Vol. 2. — København.
- STEGMANN, B. 1934: Ueber die Formen der grossen Möwen ("subgenus *Larus*") und ihre gegenseitigen Beziehungen. — Journal für Ornithologie, Vol. 82.
- SUTTON, G. M. 1938: Oddly Plumaged Orioles from Western Oklahoma. — The Auk.
- SÆMUNDSSON, B. 1936: Fuglarnir (*Aves islandiæ*). Íslensk dýr, Vol. 3. — Reykjavík.
- TAVERNER, P. A. 1933: A Study of Kumlien's Gull (*Larus kumlieni* Brewster). — The Canadian Field Naturalist, Vol. 47.
- 1934: Flicker Hybrids. — The Condor, Vol. 36.

- TAVERNER, 1934 a: Birds of the Eastern Arctic. — Canada's Eastern Arctic; issued by the Department of the Interior.
— 1938: Birds of Canada. — London.
- TCHERNIAKOVSKY, P. 1939: Contribution à l'Étude ornithologique du Scoresby-Sund (Côte Nord-Est du Groenland). — L'Oiseau & Revue Française d'Ornithologie, N. S. Vol. 9.
- WINGE, H. 1898: Grønlands Fugle. — Meddelelser om Grønland, Vol. 21.
- WITHERBY, H. F. 1924: A Practical Handbook of British Birds, Vol. 2. — London.
-