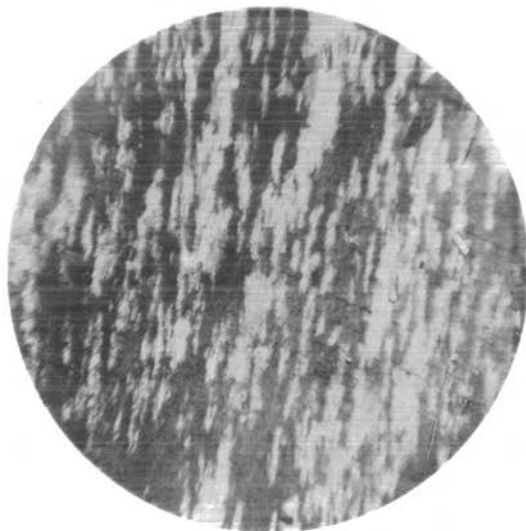


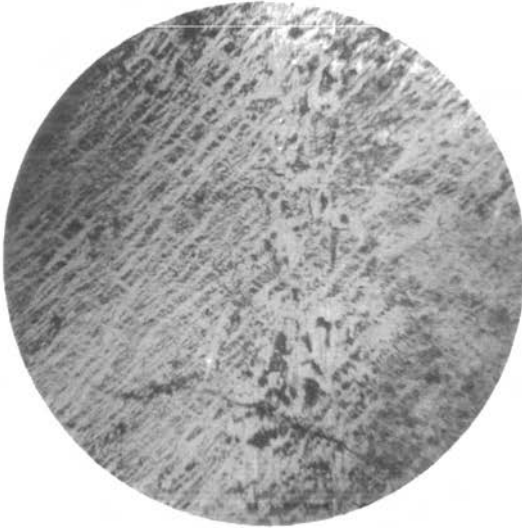
*Fig. 1.*



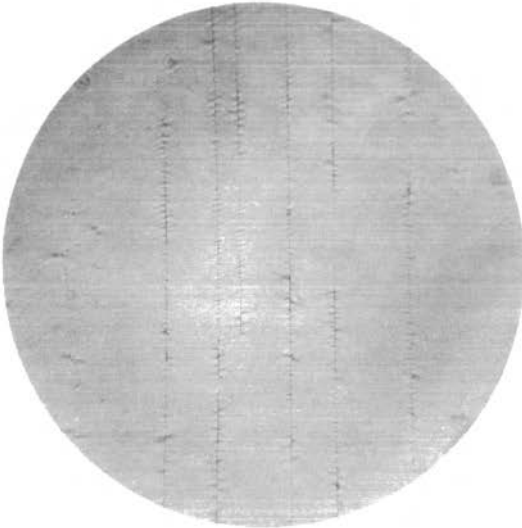
*Fig. 2.*

*Fig. 1. Mikroklin-Mikropertit, Præp. efter (001). Korsst. Nik. ( $\times 70$ ).*

*Fig. 2. Samme Feldspat, Præp. efter (010). Korsst. Nik. ( $\times 28$ ).*



*Fig. 1.*



*Fig. 2.*

*Fig. 1. Mikroklin-Mikropertit, Præp. efter (001). Korsst. Nik. ( $\times 45$ ).*

*Fig. 2. Kryptopertit, Præp. efter (001). Korsst. Nik. ( $\times 63$ ).*



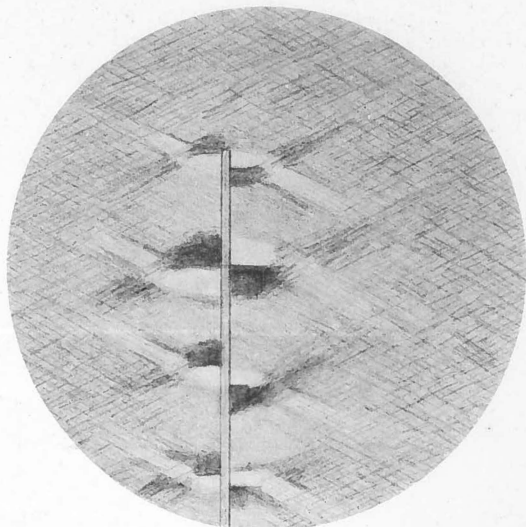
*Fig. 1.*



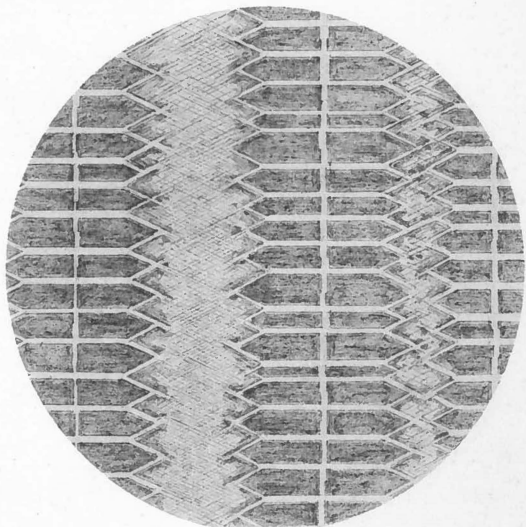
*Fig. 2.*

*Fig. 1. Mikro- og Kryptopertit, Præp. efter (001). Korsst. Nik. ( $\times 67$ ).*

*Fig. 2. Samme Feldspat, Præp. efter (010). Korsst. Nik. ( $\times 60$ ).*



*Fig. 1.*



*Fig. 2.*

*Fig. 1. Kryptopertit, Præp. efter (001). Korsst. Nik. ( $\times 1200$ ).*

*Fig. 2. Mikro- og Kryptopertit, Præp. efter (001). Korsst. Nik. ( $\times 300$ ).*

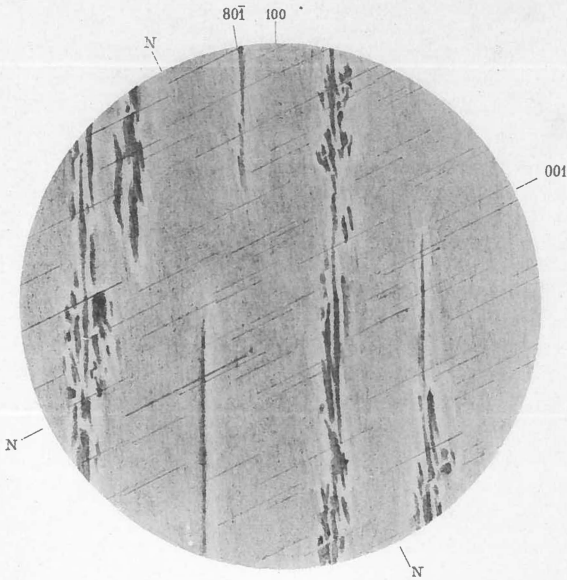


Fig. 1.

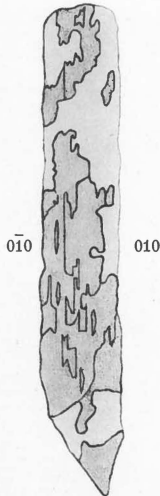


Fig. 2.

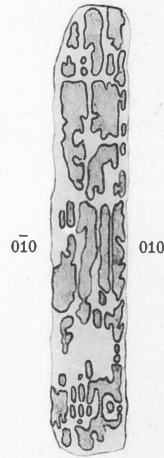


Fig. 3.

Fig. 1. Natronortoklas, Præp. efter (010). Korsst. Nik. ( $\times 50$ ).

Fig. 2. Mikroklin, delvis omdannet til Analcim ( $\times 50$ ).

Fig. 3. Albit, delvis omdannet til Analcim ( $\times 100$ ).

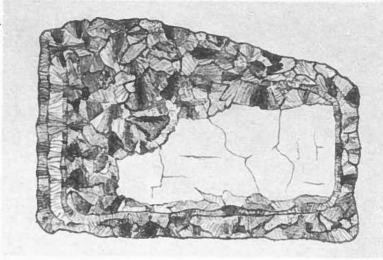


Fig. 1. (x15)

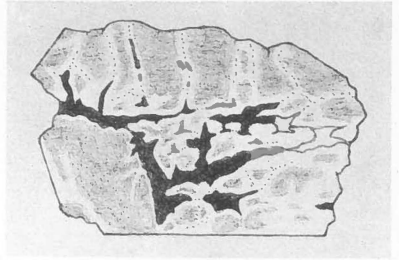


Fig. 2. (x4)

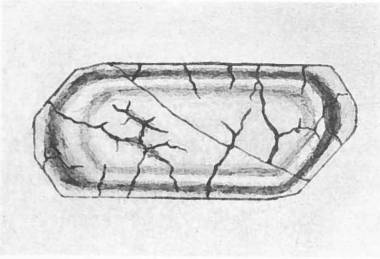


Fig. 3. (x37)

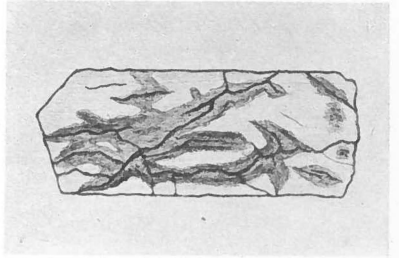


Fig. 4. (x67)

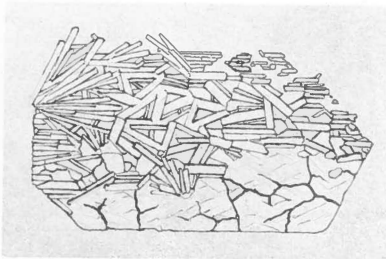


Fig. 5. (x65)

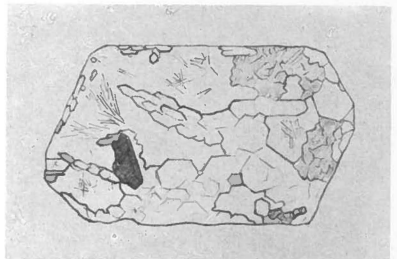


Fig. 6. (x130)

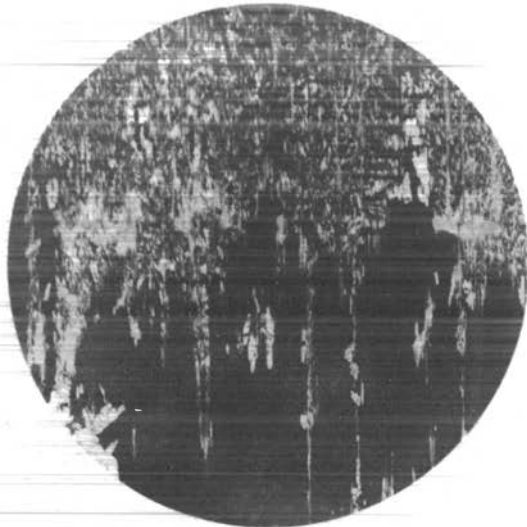
Fig. 1. Nefelin, delvis omdannet til Hydronefelit. Korsst. Nik.

Fig. 2, 3, 4. Eudialyt. (Fig. 3 og 4 korsst. Nik.)

Fig. 5 og 6. Eudialyt, omdannet til Katapleit.



*Fig. 1.*



*Fig. 2.*

*Fig. 1. Nefelin, delvis omdannet til Sodalit. Korsst. Nik. ( $\times 68$ ).*

*Fig. 2. Arfvedsonit, delvis omdannet til Albit ( $\times 10$ ).*







1.



2.

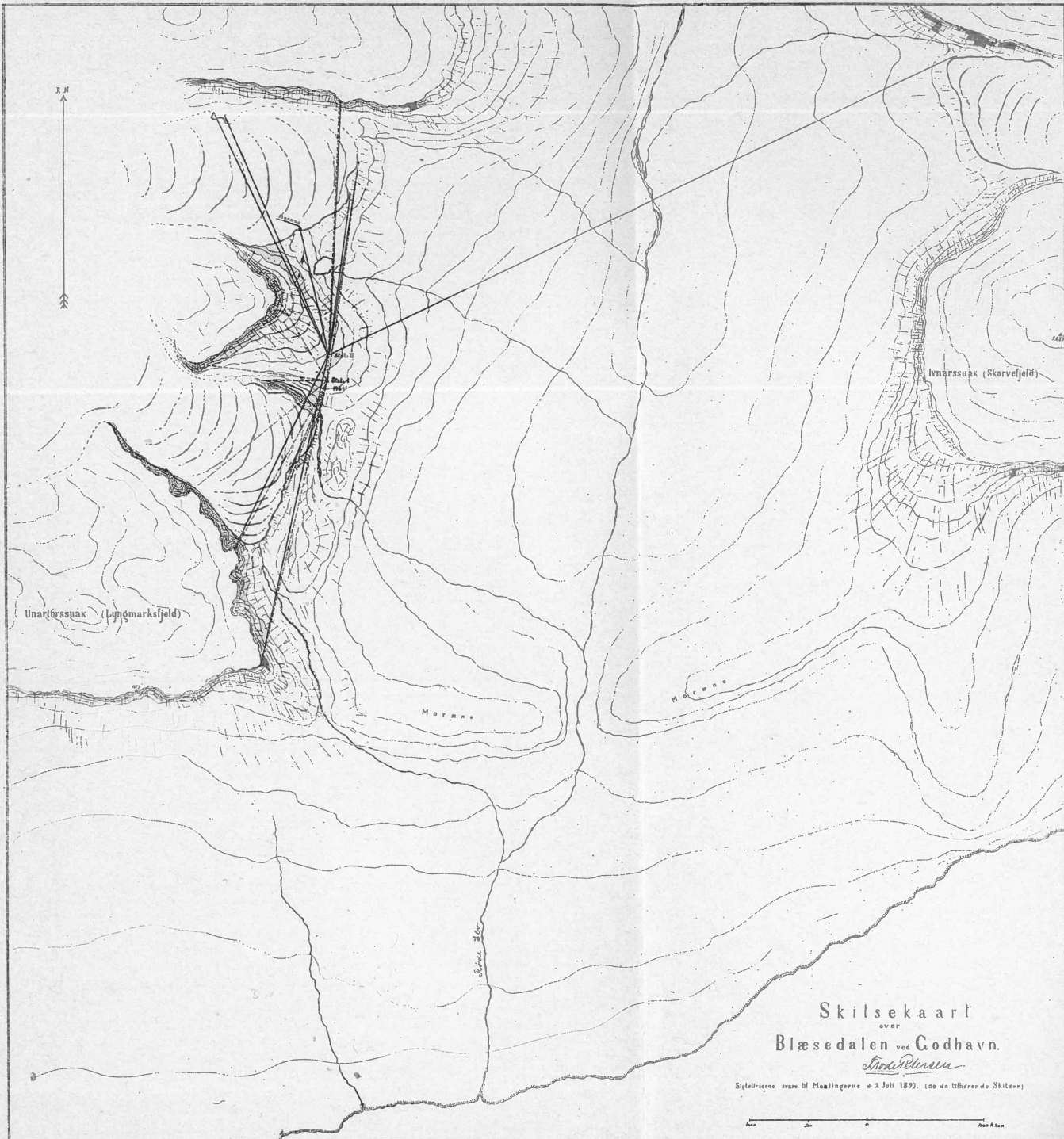


3.

G. Flink, phot.

Phototypi. Pacht & Crone.

1. Det Innre af Fjorden Kangerdluarsuk.
2. Mineralsøkare på Narsasuk vid Igaliko. (Igdlerfigsalik synes).
3. Isfjorden Korok i Tunugdliarfik.



Skilsekaart  
 over  
 Blæsedalen ved Godhavn.

*Nordenskiöld*

Siglebræns avare til Mønstlingerne d. 2 Juli 1897. (se de tilhørende Skitser)

