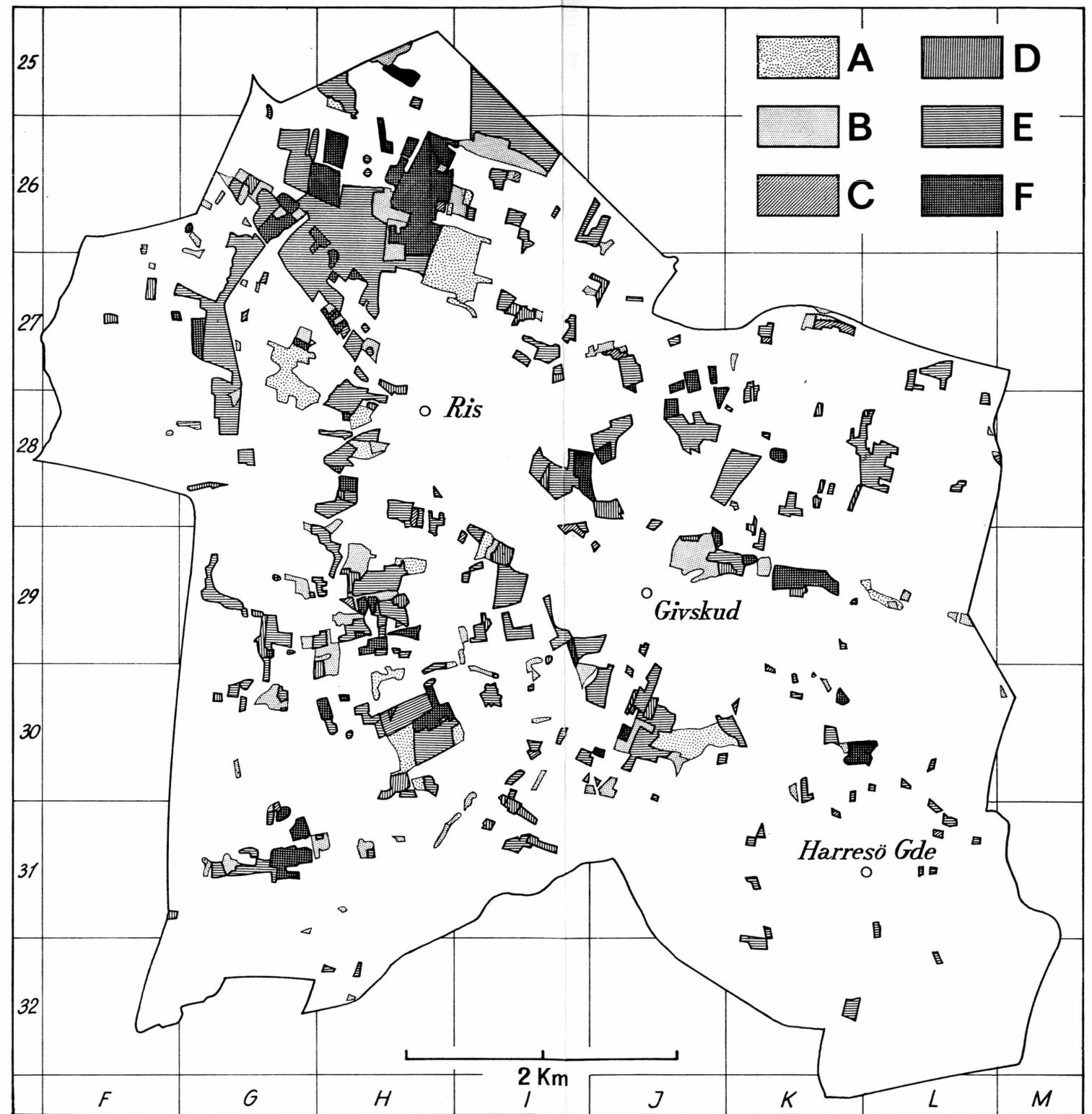


The detailed pattern of the trend of the reclamation in the parish of Givskud northwest of Vejle. The figures and letters at the frame refer to the map fig. 1 E. The white areas within the boundaries of the parish are areas which according to the original ordnance maps executed by Videnskabernes Selskab on the scale 1:20,000 were under cultivation in 1786. The borderlines are stipulated and reservations must be made as to these.

1. The reclamation 1786—1870.
2. The reclamation 1870—1904.
3. The reclamation 1904—1952.
4. Areas which according to the ordnance maps surveyed until 1952 have not been cultivated.



The trend of the plantations at Givskud 1786—1963.
 A. Heath areas afforested during the period 1786—1904.
 B. Heath areas afforested during the period 1904—1952.
 C. Abandoned and planted farmland from the period 1786—1870.
 D. Abandoned and planted farmland from the period 1870—1904.
 E. Abandoned and planted farmland from the period 1904—1952.
 F. Abandoned and planted farmland from the period 1952—1963.