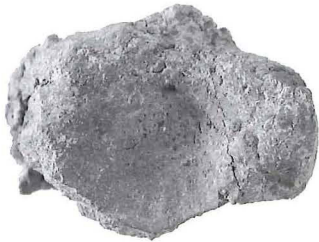




Lumps

L1, ME 96/1200, Square BA, Pass 1

Lump, Type 09. Probably completely preserved with three surfaces. Clay: light brick-red, slightly porous. Fingerprints. Probably polished. Round shape. Irregular domed profile. Fingerprints on sides and in cavity on top. Ø 2.30 \times 2.03. Th. 1.44.



L2, ME 97/0044B, Square II, Pass 3

Lump, Type 09. Large fragment with three surfaces preserved. Clay: fine, dark brown-reddish. Faint fingerprints. Some polish. Irregular oval shape. Irregular squarish profile. Surface smoothed and with depression. Sides with fingerprints and fracture. Ø 4.08 \times 2.91. Th. 2.15.

Comments: Large irregular lump with smoothed surface and depression cf. **L1**.



L3, ME 96/0834&36G, Square H, Pass 1

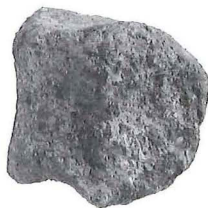
Lump, Type 09. Small fragment with part of two surfaces preserved. Clay: dark, dull, fine, brown-reddish. Faint fingerprints. Some polish? No impressions visible in fractures. One surface smoothed flat, the other with depression? Fingerprints on edge. Ø [1.57 \times 1.48]. Th. 0.74.



L4, ME 97/0031+ME 97/0030, Square II, Pass 1

Lump, Type 09. Large fragment with part of four(?) surfaces preserved. Clay: fine, dark reddish-brown. Fingerprints not visible. Polished. Oval shape. Squarish profile. No impressions. One deep groove on one surface. Ø [2.17 \times 2.18]. Th. 2.08.

Comments: In 2001, glued with small piece from same square and layer.



L5, ME 97/0027, Square II, Pass 1

Lump, Type 09. Completely preserved with three surfaces. Clay: fine, dark reddish-brown. Fingerprints not visible. No polish. Round shape, squarish profile. upper surface has a cavity, one side perhaps smoothed. Ø 2.48 \times 2.00. Th. 2.30.

Comments: Lump clearly pressed by fingers. Cavity cf. **L1**.



L6, ME 96/0744, Square E+Z, Pass 2

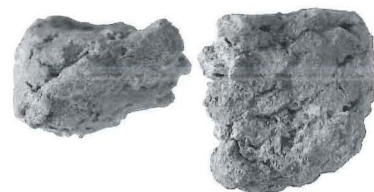
Lump, Type 09. Completely preserved with three surfaces. Clay: dark brown-reddish, fine-grained, surface greyish, with black smearing. Fingerprints. Polished. Irregular shape, domed profile. One flat surface, the remainder uneven with fingerprints. Ø 3.1 \times 3.0. Th. 2.36.

Comments: No string marks or holes. Piece prepared to be made into something? Perhaps cf. type **L1**.

L7, ME 96/1125, Square E, Pass 4

Lump, Type 09. Fragment with part of two surfaces preserved. Clay: light brown-reddish, fine-grained. Faint fingerprints. Slightly polished. Irregular shape. Solid interior. Reverse fracture without impressions. Slight cavity on top? $\text{\O} 2.59 \times 2.50$. Th. [1.56].

Comments: Perhaps cf. L1?



L8, ME 97/0011, Square II, Pass 2, /37.51

Lump? Type 09. Almost completely preserved. Clay: very light (porous), light red-brownish. Few fingerprints. No polish. Squarish shape. Irregular profile. Surface with some flat parts and fingerprints. Reverse? mutilated, uneven. $\text{\O} 2.64 \times 2.28$. Th. 1.96.

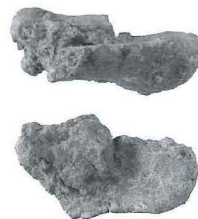
Comments: Partly worked piece where smoothing of the sides had begun.



L9, ME 69/0606, Square Z, Pass 1

Lump? Type 09. Probably completely preserved with three surfaces. Clay: fine, reddish-brown. No fingerprints. Polished. Oval shape. Triangular plus profile. Solid interior. Lump of added clay on surface? Sides smoothed. Reverse smoothed and rounded. $\text{\O} 2.48 \times 1.42$. Th. 0.95.

Comments: Unfinished document? Possibly initially too small and clay added? The clay may possibly have been pressed over a flattish, cf. Mycenaean "fold-over" nodules.



L10, ME 96/1188B, Square H, Pass 3

Lump, Type 09. Probably completely preserved with three surfaces. Clay: fine, dark reddish-brown. Fingerprints. Some polish. Squarish shape. Dome, flattish profile. Folding in clay. Reverse, fractured in part and bearing very clear fingerprints (Fig. 72). $\text{\O} 1.64 \times 1.36$. Th. 0.72.

Comments: The clay has possibly been folded over string, cf. Mycenaean types and L9. Full profile.



L11, ME 96/1195, Square BA, Pass 1

Lump, Type 09. Probably completely preserved with three surfaces. Clay: reddish-brown, fine-grained, burnt black in places. Fingerprints uncertain. No polish. Irregular rounded shape. Squarish profile. One surface possibly with fingerprints, another surface uneven (cast). $\text{\O} 2.35 \times 1.56$. Th. 1.35.

Comments: unfinished document? The uneven surface was perhaps pressed over something.



L12, ME 97/0008, Square P, Pass -, /37.23

Lump, Type 09. Completely preserved? Clay: very fine, soft and light brown clay (IMP?). No fingerprints. No polish. Irregular shape and profile. Possible string mark on surface. $\text{\O} 1.75 \times 1.31$. Th. 1.26.





L13, ME 97/0051E, Square Φ , Pass -

Lump, Type 09. Fragment with two surfaces preserved. Clay: light reddish clay. Fingerprints. Polished? Irregular rounded shape and profile. Inside or on side probable impression of string mark or straw?. Fingerprints on surface and sides. Reverse small part smoothed flat – no fingerprints. \emptyset [1.50 \times 1.12]. Th. 1.21.

Comments: Clay different from others of ME 97/0051 (**Co29**, **D11**, **D27**, **D31** and **Mi7**).



L14, ME 96/1188C, Square H, Pass 3

Lump, Type 09. Fragment with probably no surfaces preserved. Clay: fine, dark reddish-brown. Neither fingerprints nor polish. No impressions. Irregular shape and profile. Mpd. [1.84].

Comments: Only fracture?



L15, ME 97/0041, Square Π , Pass 3

Lump, Type 09. Large fragment with two surfaces preserved. Clay: fine reddish-brown, part burnt cinder. No fingerprints. No polish. Oval shape. Domed profile? Inside fracture, no impression. Reverse smoothed flat and with small projection. \emptyset 3.59 \times 1.67. Th. [0.9].

Comments: Unclear surfaces.



L16, ME 97/0026, Square AA, Pass 2, /37.25

Lump, Type 09. Probably more or less completely preserved piece with two surfaces. Clay: fine dark reddish-brown. Fingerprints. Some polish. Irregular shape and profile. \emptyset 5.6 \times 2.76. Th. 2.5

Comments: Very large lump. The smoothed part of the surface is round in section.



L17, ME 96/Misc 4R, 1996, sieving of soil

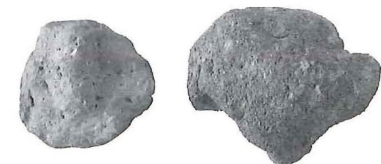
Lump, Type 09. No surface identified with certainty. Clay: red-brownish clay, rather porous and coarse-grained. No fingerprints or polish. Irregular shape. \emptyset [2.45 \times 2.13]. Th. 1.90.

Comments: Perhaps not archive clay – too many pebble inclusions.



L18, ME 96/Misc 4S, 1996, sieving of soil

Lump, Type 09 with uneven surface. Clay: dark brown-reddish. No fingerprints or polish. Irregular shape. \emptyset [1.37 \times 1.19]. Th. [1.12].



L19, ME 96/Misc 4T, 1996, sieving of soil

Lumps, Type 09. One lump with one surface preserved. Clay: very earthen, porous, dull brown-greyish. No fingerprints or polish. Both irregular shape and worn. \emptyset 1. [2.57 \times 2.10]. Th. [1.27]. 2. [1.81 \times 1.70]. Th. [0.95].

Comments: These two lumps are not of the usual archive clay.

L20, ME 97/0040A, Square II, Pass 3

Lump. Type 09. Incompletely preserved. Clay: fine, dark reddish-brown. No fingerprints visible. Polished. Irregular shape Curved section. Solid interior – no impressions. One surface smoothed flattish. Ø [1.75 × 1.47]. Th. [1.44].



L21, ME 0967U, Squares B+H, Pass 2

Lumps, Type 09. Five fragments with two or three surfaces preserved. Clay: a-d: fine dark brown-reddish; e: fine light red-brownish, all with extensive black smearing. a-d have clear fingerprints, while e is polished. All are solid clay and none has obvious shapes. Ø 1. [1.77 × 1.18] Th. 0.96; 2. [1.68 × 1.02] Th. 0.88; 3. [1.65 × 0.98] Th. 0.64; 4. [1.39 × 1.18] Th. 0.78; 5. [2.68 × 1.41] Th. 1.10.

L22, ME 97/0001A, Surface cleaning

Lump. Type 09. Incompletely preserved. Clay: fine, dark red-brownish. No fingerprints visible. No polish visible. Oblong shape, semicircular section. Solid interior – no impressions. Reverse probably pressed over rounded object (large peg?) Ø 2.47 × [1.82]. Th. 1.53.

Comments: Clay recalls that used for some of the archive documents.



L23, ME 97/0001B, Surface cleaning

Lump. Type 09. Incompletely preserved. Clay: fine, dark red-brownish. No fingerprints visible. No polish visible. Squarish shape and section. Solid interior – no impressions. Surfaces are flattish. Ø [1.26 × 1.36]. Th. [1.43].

Comments: Good archive clay.



L24, ME 97/0002B, Surface cleaning

Lump. Type 09. Incompletely preserved. Clay: fine, dark brown-reddish. No fingerprints visible. No polish visible. Squarish? shape. Triangular? section. Solid interior – no impressions. Reverse bears impression from rounded object (peg?). Ø [1.38 × 1.00]. Th. 1.10.

Comments: Good archive clay.

