

Combination nodules



Co1, ME 97/0025A, **PE I 04** and **05**, Square II, Pass 2

Combination nodule, Type 05A. Large fragment with part of three sides preserved. Full profile. Clay: fine dark reddish-brown. Faint fingerprints. Some polish. Oblong shape. Square profile. Inside most likely string with large knot in long axis of nodule (Fig. 44). On upper surface fragments from two seal impressions. Side smoothed. Bottom smoothed flat. Ø [2.33 × 0.78]. Th. 1.23.

The seal impression PE 029, **PE I 04**

Imperfectly preserved impression from moderately engraved seal with flat surface and squarish outline. One side and part of two ends preserved. Prism. Motif: hieroglyphic inscription, one sign 038, very clear. Remaining uncertain. Mpd. 1.2 × [0.4].



The inscription, **PE I 04**

038-[•]-[•]



The inscription consists of two or possibly three signs, the first being 038. After this the impression is very damaged, but there clearly seem to be traces of another two signs, from the last of which only part of a dot is preserved. The remains of these two signs are not incompatible with 010-031 as found on many hieroglyphic seals.

The seal impression PE 030, **PE I 05**

Imperfectly preserved impression from moderately engraved seal with flat surface and squarish outline. One corner preserved. Motif: part of hieroglyphic inscription? Mpd. [0.05 × 0.35].

The inscription, **PE I 05**

[•]-



The prism may be the same as seal 029, but most likely from another seal-face. Only very little of a possible sign is preserved, but it does not seem to match what is found on seal 029. On the uncertain preserved remains no reading is suggested.

Comments: It is uncertain whether the two seal impressions are from the same seal-face. The little preserved on PE 030 is not found again on PE 029. Therefore it is most likely that two different seal-faces of the same prism were used.





Co2, ME 96/1145A, Square Γ, Pass 3

Combination nodule, Type 05A. More than half preserved with three surfaces. Full profile. Clay: fine dark reddish-brown. Clear fingerprints. Polished. Rounded shape with pointed ends from string. Rectangular profile. Inside one heavy string and large knot (Fig. 45). On upper surface more than half of a seal impression. Clear fingerprints on side. Bottom: flat, but a little uneven. Ø 2.73 × [1.34]. Th. 1.1.

The seal impression PE 011

More than half-preserved impression from deeply engraved circular seal with flat surface. Stamp. Motif: five dot-shaped objects radiating from half-dot off-centre. To the right of this, four small oval dots in a row. Ø 1.25.

Comments: Leading type.



Co3, ME 97/0039, Square II, Pass 3

Combination nodule, Type 05A. Large fragment with part of three surfaces preserved. Full profile. Clay: Fine reddish-brown. Fingerprints. Polished. Shape oblong? Section squarish. Inside, very thick (Ø : c. 0.7) rolled string running along long axis. On upper surface remains from seal impression. Side shows fingerprints. Bottom smoothed flat. Ø [2.13 × 1.12]. Th. 1.27.

The seal impression PE 034

Imperfectly preserved impression from moderately engraved seal with indeterminate curvature and without edge preserved. Motif: part of three small circles with dot in centre. One almost completely preserved. Mpd. [0.52].

Comments: Type cf. 1145.



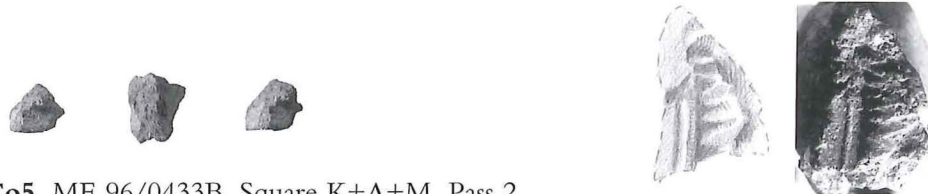
Co4, ME 96/0603C, Square Z, Pass 2

Combination nodule, Type 05A. Fragment with part of three surfaces preserved. Full profile. Clay: fine reddish-brown. Fingerprints. Slightly polished. Squarish? profile. Inside thick string mark. On upper surface part of seal impression, on side clear fingerprints. Bottom smoothed flat. Ø [1.75 × 0.66]. Th. 0.83.

The seal impression PE 022

Imperfectly preserved impression from deeply engraved seal with probably slightly curved surface. No edge preserved. Motif: part of animal – probably back and parts of both legs and beginning of neck. Mpd. [1.6 × 0.6]. Could theoretically be same as 018 (**D10**).

Comments: Upper line of nodule is edge of nodule, *i.e.* if same seal as 018 only small part impressed. Seal impression at a pronounced angle compared to reverse, like many others.



Co5, ME 96/0433B, Square K+Λ+M, Pass 2

Combination nodule, Type 05A. Small fragment with part of three surfaces preserved. Almost full profile. Clay: dark brown-reddish, fine-grained. No fingerprints preserved. Polished. Fractured almost all way round. Squarish section? Inside, fine crossed strings (Fig. 48). Upper surface with part of seal impression. Bottom smoothed flat. Seal face slopes a great deal compared to bottom. Ø [0.94 × 0.65]. Th. 0.65.

The seal impression PE 008

Imperfectly preserved impression from relatively deeply engraved seal with slightly curved surface, no edge preserved. Motif: one fine isolated(?) stroke and object with fine crossed strokes. Mpd. [1.0 × 0.51].

Comments: Thin variant.



Co6, ME 96/0834&36D, Square H, Pass 1

Combination nodule, Type 05A. Small fragment with part of three surfaces preserved. Full profile. Clay: fine reddish-brown. Fingerprints. Polished. Rounded shape. Squarish profile. Inside possible thick string mark. On upper surface part of seal impression, while side is polished? Bottom smoothed flat, but with fingerprints. Ø [1.05 × 0.63]. Th. [0.68].

The seal impression PE 027

Imperfectly preserved impression from relatively lightly engraved circular seal with clearly curved surface. Part of edge preserved. Discoid? Motif: part of fine circle attached to something? Also three small dots close to edge. Mpd. [0.78]. Est. Ø 1.0.

Comments: Seal impression slopes compared to reverse.



Co7, ME 96/0834&36B, Square H, Pass 1

Combination nodule, Type 05A. Fragment with part of three surfaces preserved. Full profile. Clay: fine reddish-brown. Fingerprints not visible. Polished. Rounded shape? Square profile? Inside string plus knot(?) (Fig. 51). On upper surface part of seal impression. Side polished. Bottom smoothed flat. Ø [1.60 × 0.75]. Th. 0.72.

The seal impression PE 025

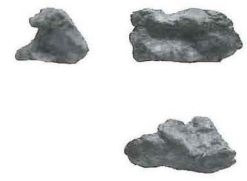
Imperfectly preserved impression from moderately engraved circular seal with a curved surface. Part of edge preserved. Discoid? Motif: one thick, pointed stroke. Mpd. [0.95]. Est. Ø 1.6.

Comments: A small piece was glued to this fragment after the seal impression was photographed and drawn, but this did not alter the impression.

Co8, ME 97/0025E, Square II, Pass 2

Combination nodule, Type 05A. Small fragment with part of three surfaces preserved. Full profile. Clay: dark brown-reddish. Clear fingerprints. Polished. Squarish? profile. Inside: crossed strings (Fig. 49). On upper surface a depression, perhaps remains from seal impression. Fingerprints on side. Bottom smoothed flat. Ø [1.45 × 0.75]. Th. 0.68.

Comments: Thin variant.



Co9, ME 96/0665B, Square E, Pass 1

Combination nodule, Type 05A. Fragment with part of two surfaces preserved. Clay: light red-brownish. No fingerprints visible. Little polish. Squarish profile? Inside one string mark(?) and knot(?), cf. **Co11**? Side polished. Bottom smoothed flat. Ø [1.15 × 0.58]. Th. [1.05].

Comments: Thick variant.



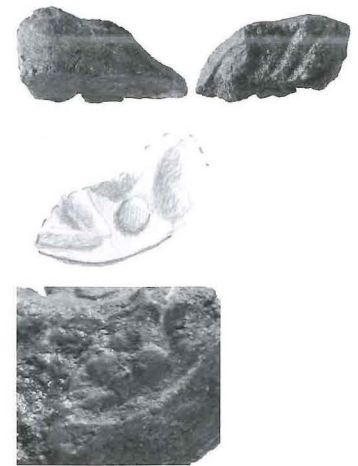
Co10, ME 96/1188A, Square H, Pass 3

Combination nodule? Type 05A? Fragment with part of three surfaces preserved. Full profile? Clay: fine, dark reddish-brown, hard, well-fired. Clear fingerprints. Polished. Oblong, oval shape? Squarish or domed profile. Inside two parallel string marks. On domed(?) side small fragment from seal impression plus clear fingerprints on side. Bottom smoothed flat. Ø [2.22 × 1.14]. Th. 0.78.

The seal impression PE 047

Imperfectly preserved impression moderately engraved circular seal with flat surface. Stamp? Motif: recalls seal 007 but probably not same. Two or three dots close to edge with strokes/objects going inwards. Mpd. [0.8 × 0.4]. Est. Ø 1.1.

Comments: Possibly peg sealing, Type 07A?





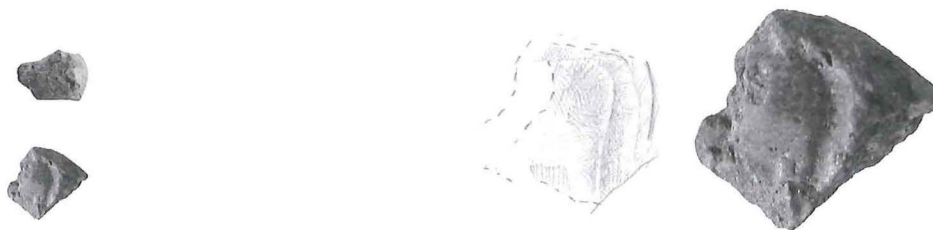
Co11, ME 96/0389E, Square Σ , Pass 1

Combination nodule? Type 05A? Small fragment with part of two surfaces preserved. Clay: light brown-reddish fine-grained. Fingerprints. Polished. One straight side. Squarish profile. Inside, string mark and knot. On upper surface part of a seal impression, on side fingerprints. Bottom missing. \O [1.30 \times 0.86]. Th. [1.0].

The seal impression PE 016

Imperfectly preserved impression from very lightly engraved circular seal with slightly curved surface. Discoid? Two strokes radiating from centre. Mpd. [0.85 \times 0.58]. Est. \O 0.93.

Comments: Thick document. Could be an irregular nodule, Type 4.



Co12, ME 0967B, Squares B+H, Pass 2,

Combination nodule?, Type 05A? Part of three surfaces preserved. Full profile. Clay: fine light brown-reddish. Faint fingerprints on sides. Lightly polished(?). Squarish profile. Inside, only fracture – no string mark evident. On upper surface part of a seal impression is preserved. Bottom smoothed flat. \O [0.93 \times 0.27]. Th. 0.64.

The seal impression PE 065

Imperfectly preserved impression from deeply engraved circular seal(?) with slightly curved surface. Discoid? Motif: hindquarters of quadruped to left (cow?), cf. PE 005, but not from same seal. \O [0.66 \times 0.40].

Comments: Even though the string marks are missing the section of this nodule is characteristic enough to suggest Type 5A.



Co13, ME 0967E, Squares B+H, Pass 2

Combination nodule, Type 05A? Part of three surfaces preserved. Clay: fine

red-brownish. Polished. Domed section? Rounded shape? Inside has impression from two parallel strings with one crossed 'Wickelband'?. On upper surface part of seal impression. The side is uneven and with fingerprints. Reverse smoothed flat. Ø [1.46 × 0.74]. Th. 0.76.

The seal impression, PE 056

Imperfectly preserved impression from well- to deeply engraved seal with curved surface and probably circular outline. Discoid? Motif: one small ring and part of dot. Ø [0.7 × 0.41]. Est. Ø 1.05.

Comments: Full profile.

Co14, ME 0967K, Squares B+H, Pass 2

Combination nodule?, Type 05A? Part of three surfaces preserved. Clay: fine, dark brown-reddish. Polished. Squarish section? Inside fracture, no visible string marks. On top fragment of a seal impression? The side has faint fingerprints. Reverse appears to be smoothed flat. Ø [1.01 × 0.81]. Th. 0.34.

The seal impression, PE 062

Imperfectly preserved impression from well-engraved, probably circular seal with curved surface. Motif: stroke terminating in a dot with small wings. Ø [0.54 × 0.38]. Est. Ø 1.05.

Comments: Seal impression uncertain,

Co15, ME 0967L, Squares B+H, Pass 2

Combination nodule?, Type 05A? Part of three surfaces preserved. Clay: fine red-brownish, polished. Squarish? section, rounded? shape. Inside fracture no visible string marks. On top impression from seal where seal motif has peeled off. Clear fingerprints on sides. Reverse smoothed flat. Ø [1.10 × 0.79]. Th. [0.47].

Comments: Full profile.

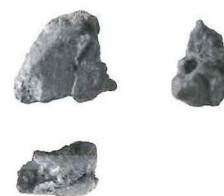
Co16, ME 97/0023A, Square II, Pass 2

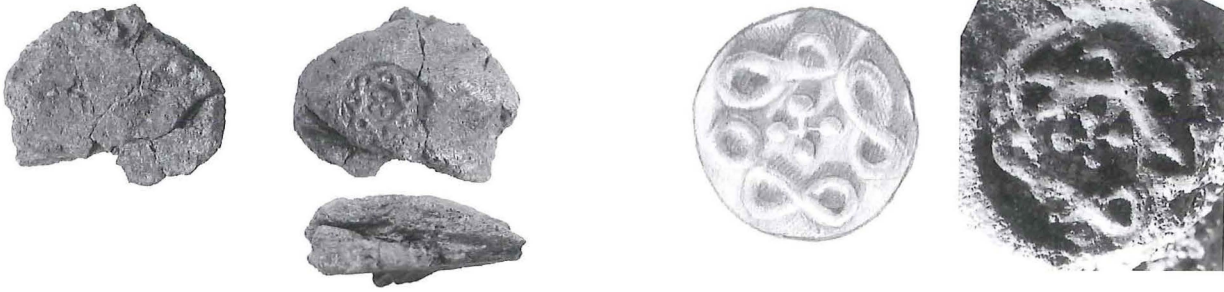
Combination nodule? Small fragment with two surfaces preserved. Clay: fine, dark reddish-brown. Polished. No fingerprints. Slightly rounded shape. Inside only fracture, *i.e.* no string marks. Top is fractured, while part of side is preserved. Reverse smoothed flat with one tiny crack(?) visible. Ø [1.40 × 1.16]. Th. [0.76].

Comments: Co16 has a very similar fabric to Cr7.

Co17, ME 97/0025F, Square II, Pass 2

Combination nodule?, Type 05A? Small fragment with part of two surfaces preserved. Clay: dark brown-reddish. No fingerprints. Polished. Rounded shape? Inside crossed strings. The bottom is smoothed flat. Ø [1.14 × 1.20]. Th. [0.39].



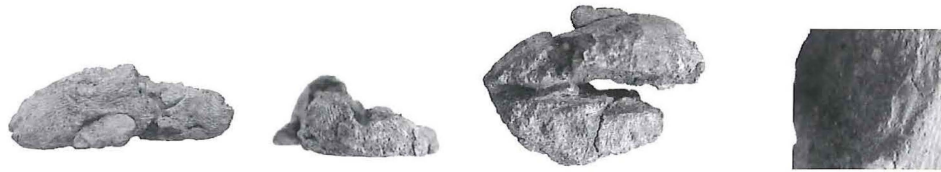


Co18, ME 96/0671, Square E, Pass 1

Combination nodule, Type 05B. More than half preserved. Clay: dark brown-reddish, fine-grained. Clear fingerprints on upper surface. Polished. Circular shape. Domed profile. Inside twined (crossed) strings – no knot (Fig. 46); cf. **Co19**. On domed surface fingerprints and one seal impression. Bottom flat except for small part protruding over corner of object. Ø 2.89 × [2.41]. Th. 0.98.
The seal impression PE 009

Completely preserved impression from deeply engraved circular seal with flat surface. Petschaft/stamp. Motif: three recumbent figure eights plus one circle, around edge, 'croix de pomme' in centre. Ø 1.08 × 1.10.

Comments: Leading type, cf. **Co19**. Part of string cutting the reverse/bottom.



Co19, ME 96/0603A, Square Z, Pass 2

Combination nodule, Type 05B. Almost completely preserved. Clay: brown-reddish, fine-grained, slightly porous. Clear fingerprints. Polished. Oval shape. Domed profile. Inside twined (crossed) strings – no knot (Fig. 47); cf. 0671. On domed surface, many clear fingerprints and minuscule fragment from seal impression. Bottom smoothed flat. Ø 3.0 × 2.17. Th. 1.00.

The seal impression PE 048

Only an extremely small part of the seal impression is preserved near the fracture. It displays a small dot with a stroke like the one seen at right on **D17** (PE 044), but much smaller. Mpd. *c.* 0.12.

Co20, ME 96/0613, Square Z, Pass 2

Combination nodule? Type 05B? Large fragment with part of two surfaces preserved. Clay: brown-reddish, fine-grained. Clear fingerprints. Polished. Slightly rounded shape. Triangular or domed profile. Inside crossed leather strips (Fig. 54). Preserved upper surface (or side) with clear fingerprints. Bottom smoothed flat. Ø [2.66 × 1.20]. Th. [0.8].

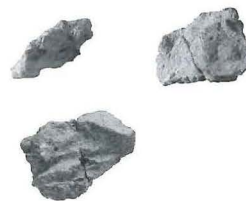
Comments: The supposed leather strips would have protruded from this nodule.



Co21, ME 97/0040B, Square II, Pass 3

Combination nodule? Type 05B? Fragment with part of two surfaces preserved. Clay: fine, light brown-reddish. Clear fingerprints. Some polish. Clear fingerprints on one surface. The small preserved part of surface on the reverse side has been smoothed. Inside has imprint from fine parallel (perhaps crossed) strings (Fig. 52). \emptyset [1.48 × 1.04]. Th. [0.44].

Comments: Recalls **Co19**.



Co22, ME 96/0898-00B, Square B, Pass 1

Combination nodule? Type 05B? Fragment with part of two surfaces preserved. Clay: fine, dark reddish-brown. Clear fingerprints. Polished. Rounded shape. Domed profile? Inside impression of 'Wickelband' (Fig. 55) – flat leather strips, cf. below. Upper surface (or side) clear fingerprints. Bottom smoothed flat. \emptyset [2.21 × 1.05]. Th. [0.81].

Comments: String mark cf. Mycenaean types, e.g. HMs 1012, 1038, 1189, 1239.



Co23, ME 96/0835B, Square H, Pass 1

Combination nodule? Type 05B? Fragment with part of two surfaces preserved. Clay: very dark, fine red-brownish. Fingerprints. No polish. Inside, clear string mark. On upper surface (or side) fingerprints. Bottom smoothed flat. \emptyset [1.76 × 0.88]. Th. [0.58].



Co24, ME 97/Misc 3B, From sieving 1997

Combination nodule? Type 05B? Small fragment with part of two surfaces preserved. Clay: hard, dark brown-reddish. Fingerprints? Polished? Domed profile? Inside impression from thin string or straw. Bottom flat smoothed. \emptyset [0.80 × 0.73]. TH. [0.33].

Comments: Rim/edge of nodule.



Co25, ME 96/0665G, Square E, Pass 1

Combination nodule? Type 05. Fragment with part of two surfaces preserved. Clay: fine dark brown-reddish. Clear fingerprints. Polished. Rounded shape? Domed profile? Inside crossed strings (Fig. 53). On upper surface (or side) fingerprints. Bottom, smoothed flat, has a crack which looks like stroke. \emptyset [1.77 × 1.46]. Th. [0.71].a

Comments: Perhaps part of **Cr2**?



Co26, ME 96/0834&36H, Square H, Pass 1

Combination nodule? Type 05? Fragment with part of only one surface preserved. Clay: fine, reddish-brown. No fingerprints. No polish. Fractured all round. No string marks in fracture. Bottom smoothed flat. \emptyset [1.44 × 1.35]. Th. [0.98].

Comments: Type very uncertain, perhaps more likely to be a lump, Type 09.





Co27, ME 0967I, Squares B+H, Pass 2

Combination nodule?, Type 05? Part of three surfaces preserved. Clay: fine, reddish-brown, extensive black smearing on all sides. Lightly polished. Squarish? section. Inside fracture – no certain string marks. On top part of seal impression, while the side has fingerprints. Reverse smoothed flat. Ø [1.30 × 0.52]. Th. [0.74].

The seal impression, PE 060

Imperfectly preserved impression from moderately engraved seal with rather flat surface and no edge preserved. Stamp? Motif: straight strokes at odd angles. Ø [0.8 × 0.52].

Co28, ME 97/0046, Square II, Pass 3

Combination nodule? Type 05? Small fragment from side and part of top and reverse. Clay: fine, dark reddish-brown. Clear fingerprints on both surfaces. Some polish. Inside impression from what looks like a knot (Fig. 50). No seal impression preserved. Small fragment of reverse smoothed flat. Ø [1.48 × 0.79]. Th. [0.65].

Comments: Could also be a Type 07.



Co29, ME 97/0051D, Square Φ, Pass ?

Combination nodule?, Type 05?. Small fragment with part of one surface preserved. Clay: fine red-brownish, black smearing on reverse. No fingerprints. Polish? Inside very clear impression from string plus a rounded object (leather?). The preserved surface is the very flat smoothed bottom. Ø [1.49 × 1.10]. Th. [0.40].

Comments: This fragment could perhaps be from a crescent?



Co30, ME 96/0444B, Square Z, Pass 1

Combination nodule? Type 05? Very small fragment with part of two surfaces preserved. Clay: fine red-brownish. No fingerprints. Polished. Triangular profile? Inside fracture – probably crossed strings. One surface is the flat smoothed bottom with black smearing. Ø [0.80 × 0.52]. Th. [0.45].

Comments: Clay very different from **R2**.

