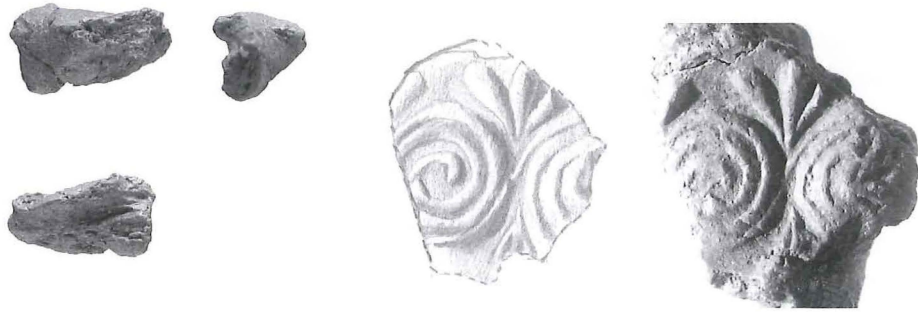


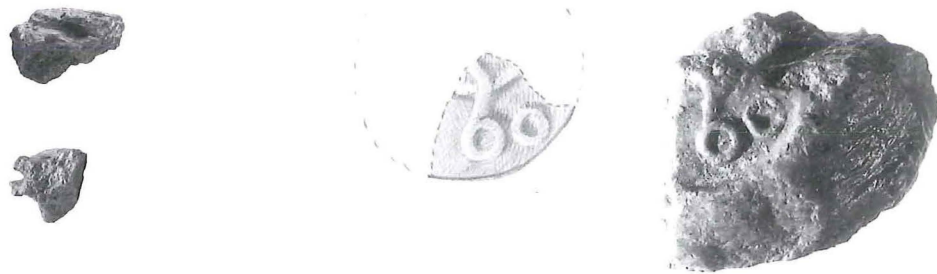
Irregular string nodules



I1, ME 96/0389B, Square Σ , Pass 1

Nodule, irregular? Fragment with two surfaces preserved. Clay: brown-reddish finely-grained. Fingerprints on side. Some polish preserved. Apparently irregular triangular shape Inside: 'Wickelband' in long axis (Fig. 35), cf. **I4**?. Upper surface bears a seal impression, while the side has fingerprints. \emptyset [1.84 \times 1.14]. Th. [1.03]
The seal impression PE 004

Almost completely preserved impression from relatively deeply engraved seal with a curved surface. Part of rim preserved. Discoid? Motif: two opposed spirals and two opposed branches with three leaves. \emptyset [1.14 \times 1.01]. Est. \emptyset 1.4.



I2, ME 96/1145B, Square Γ , Pass 3

Nodule, irregular? Fragment with part of two surfaces preserved. Clay: fine dark reddish-brown, hard burnt. Fingerprints clear on side. Some polish. Oval(?) shape. Inside two strings, one large plus knot (Fig. 41), cf. **I8**. On upper surface part of one seal impression and with clear fingerprints on the side. \emptyset [1.55 \times 1.20]. Th. [0.99].

The seal impression PE 020

Imperfectly preserved impression from relatively deeply engraved seal with flat surface and part of edge preserved. Petschaft/stamp? Motif: small circles around something. Mpd. 0.81. Est. \emptyset 1.0.

Comments: No absolute certainty concerning type. The side is pressed rather flat – may also be a standing(?) combination nodule?



I3, ME 96/0433F, Square K+Λ+M, Pass 2

Nodule, irregular? Fragment with part of three surfaces preserved. Clay: fine, dark reddish-brown. No fingerprints visible. Polished. Kind of triangular profile. Inside impression from a very fine string with loop (Fig. 42). On upper surface part of seal impression; on other side only polish. Ø [2.44 × 0.92]. Th. [1.25].

The seal impression PE 036

Imperfectly preserved impression from extremely lightly engraved – or much worn seal – with very slightly curved surface. Motif: part of circle? plus worn irregular strokes. Mpd. 1.29 × 0.68

Comments: Same light engraving found on **I4** (PE 039), **I10** (PE 031) and **Co6** (PE 027). Two pieces glued from sieved soil.



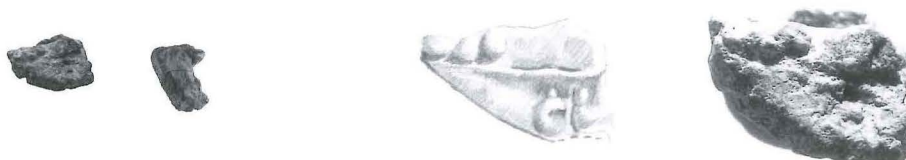
I4, ME 96/0665C, Square E, Pass 1

Nodule, irregular? Fragment with part of two surfaces preserved. Clay: fine, dark red-brownish. Clear fingerprints. Polished. Bulky profile. Inside crossed, flat, smooth strings or ‘Wickelband’ (Fig. 37), cf. **I1**?. On upper surface, part of seal impression; fingerprints on side. Ø [1.00 × 1.30]. Th. [0.9].

The seal impression PE 039

Imperfectly preserved impression from very lightly engraved seal with apparently slightly curved surface. No edge preserved. Motif: very fine branches? Mpd. [0.68].

Comments: Same light engraving found on **I3** (PE 036), **I10** (PE 031) and **Co6** (PE 027).



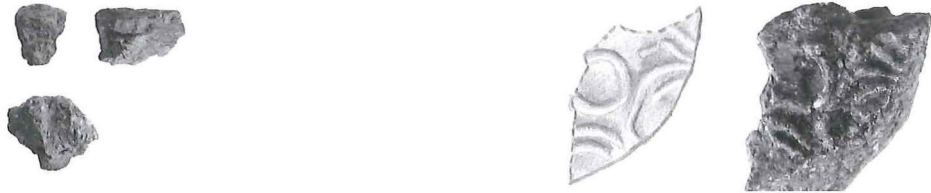
I5, ME 96/0665D, Square E, Pass 1

Nodule, irregular? Fragment with part of two surfaces preserved. Clay: usual

fine, red-brownish. Fingerprints. Polish not visible. Profile apparently triangular. Inside string mark plus big knot (Fig. 39) – or thick crossed strings. Upper surface bears part of a seal impression while the side has fingerprints. Ø [0.73 × 1.05]. Th. [0.78].

The seal impression PE 040

Imperfectly preserved impression from moderately engraved seal with curved surface. No edge preserved. Motif: unclear, with the exception of three dots. Mpd.1.0 × 0.62.



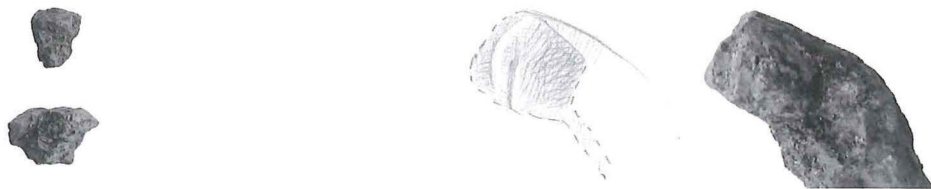
I6, ME 0967F, Squares B+H, Pass 2

Nodule, irregular? Fragment with part of two surfaces preserved. Clay: fine, light red-brownish, some black smearing on seal surface. Faint fingerprints. Polished. Triangular? section. Rounded? shape. Inside a flat, broad (W 0.03) string made of fibres running obliquely through the nodule. Upper face with seal impression Bottom missing. Ø [1.22 × 0.78]. Th. [0.78]

The seal impression PE 057

Imperfectly preserved impression from moderately engraved seal with flat surface and no edge preserved, stamp? Motif: a circle and various bent double strokes. Ø [0.85 × 0.53].

Comments: Could be Type 07(C?), large, 04 more likely.



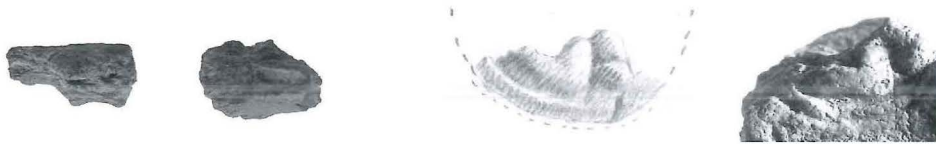
I7, ME 0967M, Squares B+H, Pass 2

Nodule, irregular? Fragment with part of two surfaces preserved. Clay: fine brown-reddish, extensive black smearing. Fingerprints visible; polished. Triangular section? and rounded shape? Inside clear imprints from two strings with fibres and knot(?). On upper surface, impression from seal and fingerprints on side. Bottom missing. Ø [1.29 × 0.63]. Th. [0.79].

The seal impression PE 063

Imperfectly preserved impression from deeply engraved seal, curvature impossible to determine – no edge preserved. Motif: indeterminable. Ø [0.82 × 0.51].

Comments: On edge of nodule, clay extrudes due to pressure of seal.



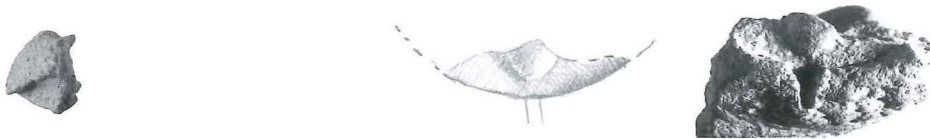
I8, ME 96/0430A, Square K, Pass 2

Nodule, irregular? Fragment with part of one surface preserved. Clay: fine light reddish-brown, part burnt black. No fingerprints preserved. Some polish. Shape: highly curved. Inside several string marks one pair crossed and a knot(?), cf. **I2**. On preserved surface part of seal impression. Ø [1.57 × 1.02]. Th. [0.85]

The seal impression PE 014

Imperfectly preserved impression from circular, deeply engraved seal with probably flat surface. Petschaft/stamp? Motif: fine line along edge with two fragmentary objects above. Mpd. 0.75. Est. Ø 1.05

Comments: String marks, compare **I2**. Same fabric as **I9**. Type uncertain, but could very well be upper part of an irregular nodule.



I9, ME 96/0433E, Squares K+Λ+M, Pass 2

Nodule, irregular? Small fragment with part of two surfaces preserved. Clay: fine, light reddish-brown. Faint fingerprints. Some polish. Inside impression from possibly crossed strings. On upper surface part of seal impression and fingerprints on side. Ø [1.25 × 0.52]. Th. [0.70].

The seal impression PE 035

Imperfectly preserved impression from circular(?), deeply engraved seal with slightly curved surface. Lentoid? Impression from string going through seal also preserved. Motif: part of oblong pointed dot. Mpd. [0.77]. Est. Ø 1.6.

Comments: The only seal impression where string mark is preserved. Same fabric as **I8**.



I10, ME 96/0898-00C, Square B, Pass 1

Nodule, irregular? Fragment with part of two sides preserved. Clay: light, fine reddish-brown, part burnt to cinder. Clear fingerprints. Some polish. Inside

impression from thick (\varnothing 0.35) string – perhaps crossed strings or perhaps ‘Wickelband’. Upper surface has cavity with possible seal impression, while the side has fingerprints. \varnothing [1.97 × 1.16]. Th. [1.14].

The seal impression PE 031

Imperfectly preserved impression of very lightly engraved seal(?) of probably circular shape and with curved surface. Discoid? Motif: faint traces of “SA” motif. Part of rim clearly preserved plus at least one dot. Mpd. 1.2.

Comments: Same light engraving found on **I4** (PE 039), **I3** (PE 036) and **Co6** (PE 027). Doubtful as seal. Surface of seal impression steeply angled compared to reverse. Could perhaps be Type 7C with heavy string wound around rounded object, cf. **Mi24** and **D2**?



I11, ME 97/0014D, Square II, Pass 2, /37.51

Nodule, Irregular? Small fragment with part of two surfaces preserved. Clay: fine, dark brown-reddish. No fingerprints. Some polish. Inside string mark, part of knot? (Fig. 40). One surface smoothed. On smaller surface part of seal impression preserved. \varnothing [1.36 × 0.49]. Th. [0.90].

The seal impression PE 046:

Imperfectly preserved impression from relatively deeply engraved seal the curvature of which cannot be discerned. Motif: a fine bent stroke some design above – large rounded shapes – from animal form? \varnothing : [0.9 × 0.35].

I12, ME 97/0043B, Square II, Pass 3

Nodule, irregular? Fragment with part of two surfaces preserved. Clay: fine light reddish-brown. Faint fingerprints on both surfaces. Probably polished. Apparently triangular shape of which the lower part (*i.e.* the two sides without seal impression) is preserved. Inside crossed double strings or more likely ‘Wickelband’ (Fig. 36). \varnothing [1.70 × 0.86]. Th. [1.12].

Comments: Concerning type: probably lower part of Type 4 since there is no seal impression.

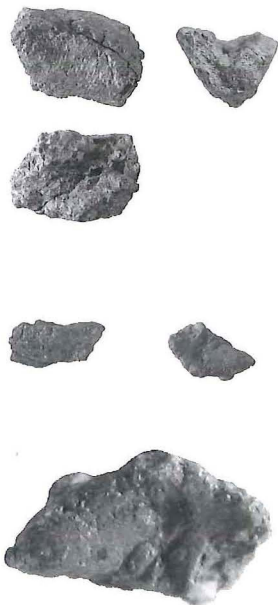
I13, ME 97/0042B, Square II, Pass 3

Nodule? irregular? Small fragment with part of two surfaces preserved. Clay: fine dark brown-reddish. Fingerprints not visible. Possibly polished. Probably triangular profile. Inside, in fracture, perhaps impression from one very fine string (Fig. 43). On larger surface, perhaps remains from a worn seal impression. \varnothing [1.32 × 0.74]. Th. [0.64].

The impression?

Imperfectly preserved impression from much worn seal(?) with slightly curved surface. No motif can be discerned. Mpd. [0.95].

Comments: The identification of the seal impression is most uncertain, however the existing impression is situated where a seal impression would be expected.



I14, ME 96/0603B, Square Z, Pass 2

Nodule, irregular? Fragment with part of two surfaces preserved. Clay: fine red-brownish. Faint fingerprints. Polished. Rather rectangular profile. Inside fine crossed(?) strings (Fig. 38). Upper surface smoothed – no seal impression preserved. Side shows faint fingerprints. Ø [0.92 × 0.65]. Th. [0.89].

Comments: Thick nodule.



I15, ME 0967AA, Squares B+H, Pass 2

Nodule, irregular? Type 04? Fragment with part of two surfaces preserved. Clay: fine, light pinkish. Faint fingerprints on one side. Polished. Triangular shape. Inside has imprint from broad, flattish band made of fibres. Ø [1.01 × 0.68]. Th. [0.61].

