

## The pottery

The pottery which came to light during the excavation of the Middle Minoan IIB destruction deposit containing the hieroglyphic archive at the palace of Petras, was relatively abundant in quantity, considering the limited area of the excavation. Furthermore, it was well-preserved enough to allow for a secure chronological attribution. Consequently, interesting observations can be made concerning both the typology of the shapes and the possible uses of the space.

In the deposit, 69 vases were assigned ME numbers during field or laboratory work, either because they were found complete, or because they preserved a full profile. These can be considered to be connected with the use of this particular room at the time of its final destruction and subsequent abandonment. All of them are included in the present publication. Twenty-nine more sherds are published here, which have particular significance for the typology of the ceramic assemblage, and/or the chronology of the deposit. (Figs. 28–9).

Twenty-three vase shapes are represented in this deposit; they were presumably used for cooking, serving, food consumption, drinking, and short-term storage. The total number of sherds from the archive deposit is *c.* 1000 and the total weight no more than 8 kgs, including the complete vases and those which preserved a full profile. As this indicates, most of the sherds were very small.

### *Vases with mostly complete profiles*



P1, ME96/0172, Square E. Pass 1, Fig. 29

**Conical ledge-rimmed bowl.** Completely preserved, mended from nine sherds; worn at the rim and on the interior surface, especially at the base. Flat base with string marks; curved body profile; almost horizontal, outcurving rim. Orange-buff fine clay; wheel marks on both surfaces; orange-reddish paint ranging to beige-brownish on the rim due to uneven firing, and added white paint. Monochrome on both surfaces; large concentrations of white spots on both surfaces and underneath; sponge marks, and fingerprints on the exterior surface. H. 4.7;  $\emptyset$  (base) 4.3, (rim) 15.2; Th. at rim 1.8.

**P2**, ME96/0250, Square Y, Fig. 29

**Conical bowl.** Intact with a chipping on the rim. Raised base, somewhat rough underneath; conical body with a slightly S profile; thin, vertical rim. Yellowish (Petras) medium clay with few inclusions; wheel marks on both surfaces; grey-buff slip; sponge marks on the exterior surface. H. 3.8; Ø (base) 5.1, (rim) 11.2.



**P3**, ME96/0251, Square Y, Fig. 29

**Handleless bell cup.** Mended from seven sherds; some cracks on the rim. Raised base, flat underneath with string marks; body with S profile; thick vertical rim. Buff-orange fine clay with few inclusions; wheel marks on both surfaces; thin slip, lighter than the clay in colour; sponge marks on the exterior surface. Four splashes of dark red paint on the exterior surface. H. 5.6; Ø (base) 3.6, (rim) 8.



**P4**, ME96/0254, Square Y

**Deep handleless conical cup.** Mended from fifteen sherds. Flat base with string marks; conical body; thin, slightly outcurving rim. Orange-buff fine clay; wheel marks on both surfaces; fingerprints on the exterior surface. H. 6.7; Ø (base) 4.4, (rim) 9.2.



**P5**, ME96/0257, Square II, Pass 1

**One-handed stemmed goblet.**

Mended from nineteen sherds; missing small parts of the body. Conical base, flat underneath with string marks; carinated body; vertical ribbon handle, starts at the rim, is raised by 1 cm and ends at the carination. Buff fine clay; wheel marks on both surfaces; brown, worn paint; sponge marks and fingerprints on both surfaces. Monochrome on both surfaces. H. 11.5; Ø (base) 5.2, (rim) 15.0.



**P6**, ME96/0259, Squares Y+II

**One-handed straight-sided cup.** Less than one quarter is preserved; mended from two sherds. Raised base, flat underneath; slightly curved body profile; thin rim following the profile of the body. Buff, fine clay; self-slip; wheel marks on both surfaces; sponge marks on the interior surface. H. 7.2; Ø (base) 5.6; (rim) 8.0.

**P7**, ME96/0260, Square T, Pass 2

**Ledge-rimmed conical bowl.** Mended from five sherds; missing parts of the base and the body. Flat base with string marks; shallow body with curved profile; almost horizontal, flat, outcurving rim. Buff, fine clay; self-slip; black, matt paint; fingerprint and sponge marks on the exterior surface. Half of the body is dipped in paint. H. 3.6; Ø (base) 5.2, (rim) 16.0.





**P8**, ME96/0277a-c, Square P, Pass 1

**One-handed conical cup.** Three non-joining fragments; mended from four sherds. Flat base, slightly curved underneath; conical body; thin, slightly incurving rim; vertical handle of elliptical section, raised above the rim. Buff, fine clay with few inclusions; wheel marks on the interior surface; orange paint; sponge marks on the handle. Monochrome. Dim. 13 × 7.5.

**P9**, ME96/0326 (+0127),  
Square N, Pass 1, Fig. 29

**One-handed carinated cup.** Mended from seventeen sherds. Raised base with string marks; biconical body with strong carination; thin rim following the profile of the body; vertical ribbon handle, raised above the rim. Yellowish (Petras), fine clay; self-slip; brown, matt paint. Band on the rim, splash decoration and dribbles on the body. H. 7.5; Ø (base) 5.2. (rim) 9.8.



**P10**, ME96/0328+0341, Square N, Pass 1, Fig. 28

**Bridge-spouted carinated jug.** Mended from five sherds; missing parts from the upper and the lower body. Raised base, flat underneath with string marks; conical body; wide, low, cylindrical neck with curved profile; vertical thin rim; vertical handle of elliptical section, raised above the rim. Fine yellowish (Petras) clay; self-slip; brown, matt paint. Splash decoration on both surfaces. H. 14.2; Ø (rim) 13.3, (maximum) 16.0.



**P11**, ME96/0360a-c, Square Λ, Pass 1, Fig. 28

**Wide-mouthed jar.** Three non-joining fragments. Orange medium clay; thick brown-reddish slip. a) Rim neck and upper body fragment; mended from four

sherds. Rim of semi-elliptical section; low neck with curved profile. Dim. 10.5 × 11.3 × 0.5. b) Body fragment; worn interior surface. c) Body fragment. Dim. 4.5 × 3.6 × 0.5.

**P12**, ME96/0361, Square Λ, Pass 1

**One-handed straight-sided cup.** Less than one quarter is preserved; mended from five sherds. Cylindrical-conical body, slightly curved in the middle; thin outcurving rim. Fine, yellowish (Petras) clay; wheel marks on both surfaces; dark brown paint. Monochrome on the exterior surface; thick band on the rim internally. H. 4.1; Ø (rim) 9.9.



**P13**, ME96/0384, Square Λ, Pass 1

**Shallow handleless conical cup.** One quarter is preserved. Raised base, flat underneath with string marks; conical body; thin rim following the profile of the body. Orange-buff fine clay with a few inclusions; wheel marks on the exterior surface; self-slip. H. 2.8; Ø (base) 4.0.

**P14**, ME96/0385+0386, Square Σ, Pass 1

**One-handed straight-sided cup.** More than one half is preserved, mended from nine fragments; missing the handle and a small part of the base. Flat base with string marks; conical body; thin rim following the profile of the body; vertical, ribbon handle. Orange fine clay; wheel marks on both surfaces; dark brown paint, and added white paint; sponge marks and fingerprints on both surfaces. Monochrome on both surfaces; white bands on the rim, in the middle of the body, and above the base; rows of small white dots below the rim, and above the base. H. 7.8; Ø (base) 6.3; (rim) 16.0.



**P15**, ME96/0393, Square T, Pass 1

**Deep handleless conical cup.** Base, body and rim fragment; mended from five sherds. Raised base, flat underneath with string marks and a knob on the interior surface; deep conical body with slightly S profile. Fine orange clay, unevenly fired; yellowish, rather thick slip; sponge marks, and fingerprints on the exterior surface. H. 6.9; Ø (base) 4.4, (rim) 9.0.



**P16**, ME96/0394, Square T, Pass 1

**Wide-mouthed spouted jug.** Approximately three quarters are preserved; mended from twenty-four fragments; base and handle intact; missing large sections of the rim and the body; chipping along breaks with localised severe chip-

ping; extensive cracking on the interior surface. Flat base with string marks; conical body; thin, incurving rim; small spout opposite the handle; vertical handle of circular section. Orange, medium clay with large inclusions; self-slip; burnt on both surfaces; wheel marks on both surfaces; sponge marks, and fingerprints on the exterior surface. H. 16.1; Ø (base) 7.5–8.4; (max.) 13.3.



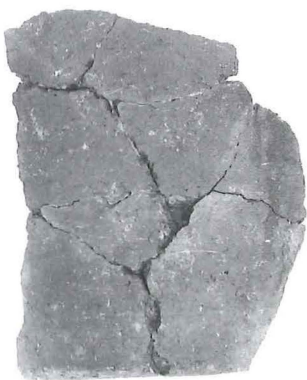
**P17**, ME96/0598, Square Z, Pass 2

**Ledge-rimmed conical bowl.** Intact. Raised base, flat underneath with string marks; body with S profile; flat horizontal, outcurving rim. Buff-yellowish medium clay; wheel marks on both surfaces; self-slip. H. 2.9; Ø (base) 4.9, (rim) 11.6.



**P18**, ME96/0599, Square Z, Pass 2, Fig. 29

**One-handed conical cup.** Mended from six fragments; very worn surface. Flat base; body with curved profile; asymmetrical thin rim following the profile of the body; vertical handle of circular section. Reddish-orange medium clay; black worn paint. Asymmetrical band, and dribbles on the upper body. H. 5.5; Ø (base) 3.4; (rim) 8.0; Th. 0.4.



**P19**, ME96/0600, Square Z, Pass 2

**Amphora.** Base and body fragment; mended from seven sherds. Flat base; curved body profile; reddish medium clay; self-slip. Dim. 18 × 13 × 0.5.

**P20**, ME96/0602, Square Z, Pass 2, Fig. 28

**Oval-mouthed amphora.** Rim, neck shoulder and handle fragment. Shoulder with curved profile; low neck; rounded rim following the profile of the neck; vertical handle of elliptical section, from the upper part of the neck to the shoulder. Buff medium clay; self-slip; black-brownish paint. Monochrome upper part, including the handle. Dim. 16 × 21 × 0.5.



**P21**, ME96/0605, Square Z, Pass 2

**Conical bowl.** Mended from six fragments. Raised base, rough underneath; shallow, conical, asymmetrical body; thin rim following the profile of the body. Orange fine clay with few inclusions; wheel marks on both surfaces; self-slip; fingerprints. H. 3.5; Ø (base) 5, (rim) 10.3.



**P22**, ME96/0608, Square Z, Pass 2

**Conical bowl.** Less than one half is preserved; mended from six fragments. Raised base, flat underneath; conical body; slightly incurving rim of triangular section. Orange medium clay with some inclusions; sponge marks on both surfaces. H. 3.7; Ø (base) 5; (rim) 11.5.



**P23**, ME96/0609, Square Z, Pass 2, Fig. 29

**One-handed straight-sided cup.** Base and lower body fragment. Flat base; cylindrical body. Fine yellowish (Petras) clay; greyish-black worn paint. Monochrome. Pres. H. 4.6; Ø (base) 7.7, (rim) 8.6.



**P24**, ME96/0611, Square Z, Pass 2

**Conical bowl.** One quarter is preserved. Raised base, flat underneath with string marks; conical body; thick rim following the profile of the body. Orange fine clay with few inclusions; wheel marks on both surfaces; self-slip. H. 3.4; Ø (base) 6.0, (rim) 12.0.



**P25**, ME96/0612, Square Z, Pass 2, Fig. 29

**Conical bowl.** Complete; mended from two sherds. Raised base, flat underneath with string marks; conical shallow bowl; thin rim following the profile of the body. Fine, yellowish (Petras) clay with few inclusions; wheel marks on both surfaces; self-slip; fingerprints. H. 2.8; Ø (base) 3.8, (rim) 10.1; Th. (rim) 0.3.



**P26**, ME96/0764, Square E, Passes 1–2

**One-handed conical cup.** Two thirds of the body and the lower handle attachment are preserved; mended from five fragments. Flat base, rough underneath; conical body; thin rim following the profile of the body. Fine yellowish (Petras) clay; reddish-brown and added white paint; light-on-dark decoration. Monochrome on both surfaces; on the exterior surface white band at the junction of the body with the base; on the interior surface two white bands forming an angle at the upper part of the body and the rim. H. 4.9; Ø (base) 4.2, (rim) 8.0; Th. 0.3.



**P27**, ME96/0765, Square E, Passes 1–2

**Handleless bell cup.** Intact except for some chipping on both surfaces of the rim. Raised base, flat underneath with string marks; conical body; thick rim. Buff fine clay with few inclusions; self-slip; wheel marks and sponge marks on both surfaces. H. 5.2; Ø (base) 4.5, (rim) 8.6.



**P28**, ME96/0768, Square E, Passes 1–2

**Handleless conical cup.** Mended from eighteen sherds. Flat base with string marks; conical body; thick rim following the profile of the body. Fine yellowish (Petras) clay; yellowish-buff slip; wheel marks on both surfaces; sponge marks on the exterior surface. H. 6.8; Ø (base) 4.3, (rim) 9.6.

**P29**, ME96/0769, Square E, Passes 1–2, (no photograph)

**Conical bowl.** One half is preserved; mended from three sherds. Slightly raised base, flat underneath; conical body; rim of triangular section, following the profile of the body. Buff, fine clay with several inclusions; self-slip; sponge marks on the exterior surface. H. 4.5; Ø (base) 4.4, (rim) 9.0.

**P30**, ME96/0770, Square E, Passes 1–2, (no photograph)

**Conical bowl.** One quarter is preserved; mended from two sherds. Slightly raised base, flat underneath with string marks; conical body; outcurving, rounded rim. Buff fine clay with several inclusions; thick buff slip; sponge marks on the exterior surface. H. 3.3; Ø (base) 4.0, (rim) 10.2.



**P31**, ME96/0771, Square E, Passes 1–2, Fig. 29

**One-handled conical cup.** More than one half is missing, including the handle. Flat base with string marks; conical body; thin, slightly outcurving rim; the lower attachment of a vertical handle of elliptical section is preserved. Fine yellowish (Petras) clay with a few inclusions; wheel marks on both surfaces; self-slip; black matt worn paint. Monochrome on both surfaces and underneath the base. H. 7.6; Ø (base) 5.3, (rim) 8.0.



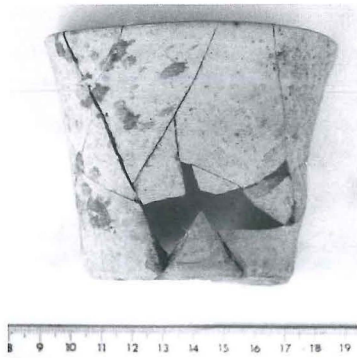
**P32**, ME96/0772, Square E, Passes 1–2

**One-handled bell cup.** One half is preserved; mended from two sherds. Raised base, rough underneath; body with S profile; the lower attachment of a vertical handle of elliptical section is preserved. Orange medium clay; wheel marks on both surfaces; self-slip; sponge marks on the exterior surface. H. 7.0; Ø (base) 4.0, (rim) 8.0.



**P33**, ME96/0860, Square Γ, Pass 2

**Conical bowl.** Almost one half is preserved; mended from eleven sherds. Raised base, rough underneath; conical body; rounded rim following the profile of the body. Fine yellowish (Petras) clay with few inclusions; buff-orange thin slip; wheel marks on both surfaces; sponge marks on the exterior surface. H. 2.6; Ø (base) 5.1, (rim) 10.0.



**P34**, ME96/0861, Square  $\Gamma$ , Pass 2, Fig. 29  
**One-handed straight-sided cup.** Missing the handle and parts of the lower body; mended from many sherds. Flat base; body with slightly curved profile; rim following the profile of the body. Fine yellowish (Petras) clay with few inclusions; self-slip; black-brownish paint. Splash decoration on both surfaces. H. 8.3;  $\varnothing$  (base) 7.2, (rim) 10.0.

**P35**, ME96/0863, Square  $\Gamma$ , Pass 2

**Ledge-rimmed bowl.** Almost one half is preserved; mended from two sherds. Raised base, rough underneath; curved body profile; outcurving, horizontal rim. Fine orange-buff clay with few inclusions; orange-buff slip; wheel marks on both surfaces; few sponge marks on the exterior surface. H. 4.2;  $\varnothing$  (base) 5.3, (rim) 12.0.



**P36**, ME96/1099, Square B, Pass 3

**One-handed carinated cup.** Less than one third is preserved; mended from two sherds. Slightly raised base; body with angular profile. Fine buff clay with few inclusions; traces of black worn paint. Initially monochrome on both surfaces. H. 4.5; W. 5.0; Th. 0.4.



**P37**, ME96/1104, Square H, Pass 1

**Conical bowl.** Complete; mended from six sherds. Raised base, flat underneath with string marks; shallow, conical, body; thin rim following the profile of the body. Pinkish-buff fine clay with few inclusions; buff-greyish slip; wheel marks on both surfaces; sponge marks on the exterior surface. H. 3.7;  $\varnothing$  (base) 4.3, (rim) 9.6.



**P38**, ME96/1106 + P97/0042,  
 Square B, Pass 3, Fig. 29

**Kantharos** with crinkled rim. ME96/1106: handle, rim, body and base fragment; mended from twenty-six sherds. Conical, low base, flat underneath; carinated body; thin rim of semi-elliptical section; vertical ribbon handle, raised above the rim; a fragment of a second handle is preserved on ME97/0042, three fragments from the rim, and four fragments from the body. Grey fine clay, unevenly fired; dark brown lustrous paint. Monochrome on the exterior surface, including the base. Dim.: 13.2 x 13.1 x 0.2;  $\varnothing$  (base) 4.3.

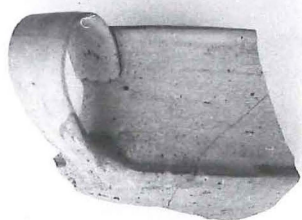






**P39**, ME96/1158, Square Z, Pass 4, Fig. 29

**Deep handleless conical cup.** Missing part of the rim; mended from many sherds. Flat base with string marks; conical body; thin, slightly incurving rim. Fine yellowish (Petras) clay; self-slip; wheel marks on both surfaces; fingerprints. H. 7.5; Ø (base) 4.2, (rim) 9.4; Th. 0.3.



**P40**, ME96/1160, Square H, Pass 4, Fig. 29

**One-handed carinated cup.** Rim, body and handle fragment. Body with pronounced carination; thin rim following the profile of the body; vertical ribbon handle raised above the rim ending at the carination. Fine yellowish (Petras) clay; wheel marks on the interior surface; self-slip; black worn paint. Monochrome on both surfaces. Pres. H. (with handle) 5.7, (without handle) 5.3; Ø (rim) 8.0.



**P41**, ME96/1161, Square H, Pass 4

**Handleless deep conical cup** with pierced base. Missing large part of the base and the rim; mended from many sherds. Flat base with string marks and a hole in the middle; deep, conical body; thin rim. Buff fine clay; wheel marks on both surfaces; self-slip; few fingerprints. H. 7.7; Ø (base) 4.0, (rim) 9.2; Th. 0.3.



**P42**, ME96/1165, Square Γ, Pass 3, Fig 29

**Conical bowl.** One half is missing; mended from three sherds; burnt at the rim; chipped at the base. Slightly raised base with string marks; shallow body with S profile; thin, outcurving rim of triangular section. Buff fine clay with few inclusions; wheel marks on the exterior surface; slip slightly lighter in colour than the clay. H. 4.0; Ø (base) 5.7, (rim) 10.4; Th. 0.4.



**P43**, ME96/1166, Square Γ, Pass 3, Fig. 28

**Wide-mouthed jug** with trefoil rim. Rim, neck and upper body fragment; worn interior surface; probably handmade. Thin rim; trefoil mouth; low, conical neck. Reddish, medium clay; brown paint. Monochrome on the exterior surface. Narrow asymmetrical band on the rim internally. Dim. 10.8 × 11.8 × 0.5.



**P44**, ME96/1194, Square BA, Pass 1, (no photograph)

**Conical bowl.** One quarter is preserved; mended from four sherds. Raised base; shallow conical body; outcurving rim of triangular section. Buff, medium clay with several inclusions; wheel marks on both surfaces; orange-buff slip; nail impression on the base. H. 4.2; Ø (base) 4.2, (rim) 11.0.



**P45**, ME96/1197, Square BA, Pass 1, Fig. 29, (no photograph)

**Ledge-rimmed conical bowl.** C. one quarter is preserved. Slightly raised base with string marks; conical body with curved profile; flat, horizontal, outcurving rim of triangular section. Yellowish (Petras) fine clay with few inclusions; wheel marks on the exterior surface; self-slip; drop of brown paint on the rim externally. H. 3.8; Ø (base) 6, (rim) 11.8; Th. 0.5.

P46, ME96/1198, Square BA, Pass 1, (no photograph)

**Ledge-rimmed conical bowl.** Base, body and rim fragment. Raised base with string marks; conical body; flat, horizontal, outcurving rim of triangular section. Beige-buff fine clay with few inclusions; orange-buff slip; sponge marks. H. 3.8; Ø (base) 5.5, (rim) 12.2; Th. 0.5.

P47, ME96/1201, Square Δ, Pass 1, Fig. 29

**Conical bowl.** Intact, slightly chipped at the rim. Flat base with string marks; body with slightly S profile; horizontal, incurving rim of triangular section. Buff fine clay with several inclusions. H. 3.8; Ø (base) 5.8; Th. 1.2.



P48, ME96/1207, Square BA, Pass 1

**Ledge-rimmed conical bowl.** Missing large part of the body and the rim. Raised base with string marks, and conical knob inside; conical body with S profile; flat, horizontal, outcurving rim of triangular section. Buff-pinkish fine clay with few inclusions; wheel marks on the interior surface; whitish slip; grey black matt paint. Splash decoration on both surfaces. H. 4.6; Ø (base) 5.7, (rim) 13.3.



P49, ME96/1209, Square N, Pass 3, Fig. 28

**Amphora.** Neck, shoulder and handle fragment. Low, conical neck; shoulder with curved profile; vertical handle of circular section, raised above the rim; potter's mark at the lower attachment (V). Buff-pinkish fine clay with few inclusions and grey core; buff slip; black matt worn paint. Band at the lower part of the neck, oblique strokes on the handle. Part of a solid circle on the shoulder. Dim.  $10.2 \times 9.4 \times 0.8$ .

P50, ME96/1253, Square E, Passes 1–2

**Globular (one-handled?) cup.** Rim and upper body fragment; mended from two sherds. High, oblique, outcurving rim. Buff, fine clay; black, lustrous paint, red matt, and added white paint, very worn. Black monochrome on both surfaces; red band under the rim, and below it a zone of triangles and arched lines; white strokes and arched lines. Dim.  $6 \times 4.8 \times 0.4$ .



P51, ME96/1261, Square E, Passes 1–2, Fig. 29

**Conical bowl.** One quarter is preserved. Flat base; slightly convex-concave body; thin rim of triangular section, following the profile of the body. Fine yellowish (Petras) clay; wheel marks on both surfaces; self-slip; fingerprints on the exterior surface. H. 2.5; W. 6.7; Th. 0.4.



**P52**, ME97/1263+1306, Square  $\Sigma$ , Pass 3, Fig. 28

**(Tripod) spouted cooking pot.** Two, non-joining rim and body fragments mended from seven and nine sherds respectively. Thin, incurving rim following the profile of the body with small open spout; oval body with slightly curved profile. Reddish coarse clay with many inclusions; self-slip; wheel marks on both surfaces; fingerprints on the exterior surface.  $\emptyset$  (rim) 12.0; W. 12.3; L. 14.7.



**P53**, ME96/1265a-b, Square A, Pass 2

**Ledge-rimmed conical bowl.** a) Base, body and rim fragment. Slightly raised base, flat underneath; flat, horizontal rim of triangular section; fine, orange clay; self-slip; red paint. Splash decoration on both surfaces. Dim. 2.5 × 9.8 × 0.3. b) Non-joining rim and upper body fragment. Splash decoration. Dim. 3.9 × 3.4 × 0.3.



**P54**, ME96/1278a-c, Squares E+Z, Pass 1, Fig. 29

**Shallow carinated bowl.** Rim and body fragments. Rim of triangular section; Fine, buff clay; brown-black paint, and added white; Monochrome on both surfaces; two thin white bands on either side of the carination and between them two circular solid motifs. Dim. 1.8 × 6.2 × 0.3. c) Non-joining rim and body fragment. Dim. 1.9 × 1.8 × 0.3.



**P55**, ME96/1381, Square P, Pass 1

**One-handed conical cup.** Less than one half is preserved; mended from two sherds. Raised base, flat underneath with string marks, and a knob inside; conical body; thin rim; vertical handle, of elliptical section. Orange-buff, fine clay; wheel marks on the interior surface; black paint; sponge marks and fingerprints on the exterior surface. Monochrome on both surfaces. H. 6.8;  $\emptyset$  (base) 10.0.



**P56**, ME96/1388, Square E, Pass 2

**Conical bowl.** Less than one fifth is preserved. Slightly raised base, flat underneath; shallow, conical body; rim following the profile of the body. Buff, medium clay; self-slip. Dim. 5.3 × 3.5 × 0.4.



**P57**, ME96/1389, Square E, Passes 1-2

**One-handed straight-sided cup.** One half is preserved, mended from eighteen sherds. Raised base, flat underneath with string marks; cylindrical-conical body; vertical, ribbon handle. Buff, fine clay; wheel marks on both surfaces; self-slip; black, red and white paint. Traces of irregular black and red bands on the interior surface; on the exterior surface, at the middle of the body two narrow white bands with dots between them; on the handle black and red bands, with some traces of white paint. H. 8.1;  $\emptyset$  (base) 5.0, (rim) 10.0.



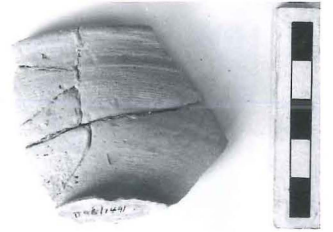
**P58**, ME96/1463, Square Z, Pass 1

**Handleless conical cup** with pierced base. Less than one half is preserved. Raised base, flat underneath with a piercing in the middle and deep string marks; conical body; thin, straight rim. Orange fine clay with few inclusions; wheel marks and sponge marks on both surfaces. H. 4.4; Ø (base) 5.2, (rim) 10.5.



**P59**, ME96/1491, Square Z, Pass 2

**Conical bowl**. One fifth is preserved; mended from six sherds. Raised base, flat underneath with string marks; conical body; outcurving rim of triangular section. Orange, fine clay with few inclusions; light orange-buff slip; sponge marks. H. 4.3; Ø (base) 5.0, (rim) 11.0.



**P60**, ME96/1493, Square T, Pass 1, Fig. 29

**Handleless bell cup**. Base, body and rim fragment; mended from three sherds. Raised base, rough underneath with string marks; body with S profile; rim of triangular section following the profile of the body. Buff, fine clay with few inclusions; self-slip; sponge marks on the lower exterior surface. Dim. 5.8 × 5.9 × 0.3; Ø (base) 3.8.

**P61**, ME97/0029, Square P, Pass 2

**Conical bowl**. Missing small body fragment; mended from ten sherds. Raised base with string marks; conical, shallow body; rim of triangular section, following the profile of the body. Buff, fine clay; wheel marks on both surfaces; self-slip; brown-black paint; Splash decoration on the interior surface. H. 3.2; Ø (base) 5.2, (rim) 14.0; Th. 0.5.

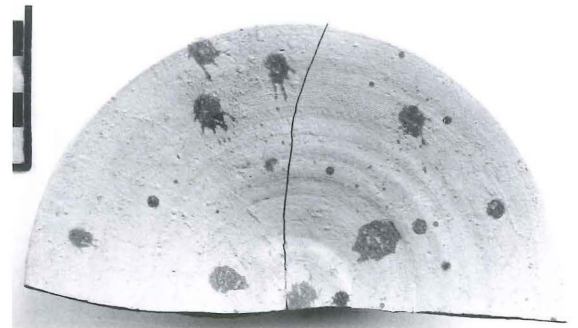


**P62**, ME97/0037, Square AA, Pass 2

**One-handed carinated cup**. Two thirds are preserved; mended from eight sherds. Flat base with conical knob inside; concave-convex body. Buff-pinkish fine clay; black matt paint. Dipped in paint twice from the rim. H. 6.0; Ø (base) 4.4, (rim) 10; Th. 0.3.

**P63**, ME97/0053, Squares A+ II, Fig. 29

**Conical bowl**. One half is preserved; mended from two sherds. Slightly raised base, flat underneath; conical, shallow body; thin rim following the profile of the body. Fine, yellowish (Petras) clay; wheel marks on the interior surface; self-slip; black, matt paint. Splash decoration on the interior surface. H. 3.7; Ø (base) 5.5, (rim) 14.5. Th. 0.4.



P64, ME97/0055, Square AB, Pass 2

**Deep handleless conical cup.** Complete body, fragmentary base. Flat base, rough underneath with string marks; conical deep body; thin rim following the profile of the body. Fine yellowish (Petras) clay; self-slip; fingerprints on the exterior surface. H. 7.0;  $\text{\O}$  (base) 4.0, (rim) 9.3; Th. 0.2.



P65, ME97/0056, Square AB, Pass 2

**Ledge-rimmed conical bowl.** One half is preserved; small chips at the rim. Flat base with some chips at the edge and string marks; slightly curved body profile; flat, horizontal, outcurving rim of elliptical section. Fine yellowish (Petras) clay; wheel marks on both surfaces; self-slip; fingerprints on the exterior surface. H. 4.0; W. (base) 2.2, (rim) 12.0; Th. 1.2.



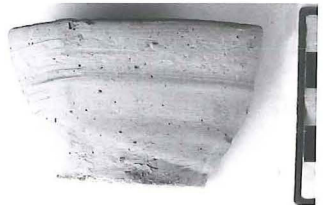
P66, ME97/0107, Square  $\Phi$

**Conical bowl.** Complete; mended from four sherds. Slightly raised base, rough underneath; conical body; thin rim following the profile of the body. Orange, fine clay with inclusions; wheel marks on both surfaces; self-slip; fingerprints. H. 2.9;  $\text{\O}$  (base) 5.3, (rim) 11.7; Th. 0.5.



P67, ME97/0108, Square  $\Phi$

**Handleless conical cup.** Rim, body and base fragment; mended from two sherds. Raised base, flat underneath; conical body; rim of semi-elliptical section, following the profile of the body. Buff fine clay with few inclusions; self-slip; sponge marks on the exterior surface. Dim.  $4.5 \times 7.5 \times 0.3$ .



P68, ME97/0110, Square  $\Phi$

**Handleless conical cup.** One half is preserved. Flat base, rough underneath; conical, shallow body; thin rim following the profile of the body. Buff-pinkish fine clay with few inclusions; wheel marks on both surfaces; self-slip; large traces of burning on both surfaces; fingerprints. H. 3.6; W. (base) 2.2, (rim) 8.0; Th. 0.3.



P69, ME97/0130, Square  $\Phi$

**Ledge-rimmed conical bowl.** One half is preserved. Flat base with string marks, and a circular depression inside; concave-convex body profile; oblique, outcurving rim. Brown-orange, medium clay with a grey core; wheel marks on both surfaces; self-slip; traces of burning on both surfaces; fingerprints. H. 3.7;  $\text{\O}$  (base) 7.7, (rim) 18.0; Th. 0.6.

## Sherds

**P70**, P96/0120/1, Square II

**Jug.** Neck and rim fragment; mended from two sherds. Conical-cylindrical neck, with curved profile; thin, slightly incurving rim. Buff, fine clay with few inclusions; wheel marks on the interior surface; self-slip. Dim. 6.2 × 8.1 × 0.5.



**P71**, P96/120/2, Square II

**Ledge-rimmed conical bowl.** Rim and body fragment. Shallow body with curved profile; thin rim following the profile of the body; Fine yellowish (Petras) clay with inclusions; wheel marks on the interior surface; self-slip. Dim. 6.3 × 6.5 × 0.4.



**P72**, P96/120/3, Square II

**Deep handleless conical cup.** Base and body fragment; mended from two sherds. Flat base; conical body with slightly curved body profile. Buff, fine clay with few inclusions; wheel marks on the interior surface; self-slip. Dim. 3.5 × 5.7 × 0.03.



Bag P96/0120 contained 29 sherds; 19 diagnostic; weight: 0.25 kg.

Shapes: 1 amphora; 3 jugs, including **P70** (see above); 3 conical bowls, including **P71** (see above); 9 conical cups; 3 cups. Clay: Petras: 1 (fine); buff: 8 (fine), 2 (medium); beige-buff: 1 (fine); orange-buff: 2 (fine), 3 (medium); orange: 7 (medium); sponge ware: 2 (medium). Decoration: 8 (monochrome 2, ripple pattern 1, dark-on-light 4). (1 LMIA intrusive).

**P73**, P96/0136/1, Square E

**One-handed carinated cup.** Rim and body fragment. Thin rim following the profile of the body. Fine beige-buff clay with few inclusions; brown paint. Monochrome. Dim. 3.4 × 3.1 × 0.03.



**P74**, P96/0136/2, Square E

**Conical bowl.** Rim and body fragment. Conical body with curved profile; thin rim following the profile of the body; Fine orange-buff clay; brown paint. Monochrome on both surfaces. Dim. 3.8 × 5.7 × 0.4.

**P75**, P96/136/3, Square E

**Pithoid jar.** Rim and shoulder fragment. Shoulder with curved profile; thick, slightly outcurving rim. Medium buff clay; self-slip. Dim. 4.0 × 5.0 × 0.5.



Bag P96/0136 contained 52 sherds; 28 diagnostic; weight: 0.35 kg.

Shapes: 2 pithoid jars; 16 jugs; 1 pithoid jar, **P75** (see above); 1 conical bowl, **P74** (see above); 2 small bowls; 1 ring base bowl; 1 cup; 1 carinated cup, **P73** (see above); 2 conical cups. Clay: buff: 1 (fine), 1 (medium); beige buff: 1 (fine), 6 (medium); orange buff: 1 (fine), 3 (medium); orange: 2 (fine), 12 (medium), 7 (coarse); reddish: 4 (medium); brown: 3 (medium), 4 (coarse); grey: 3 (fine); brown with limestone inclusions: 3 (medium); sponge ware: 1 (medium). Decoration: 16 (monochrome 10, dark-on-light 5, light-on-dark 1). Remnants:

only large sherds are coarse and non-diagnostic; some fine ware; the medium sherds are small. MMII (LMIA intrusive).

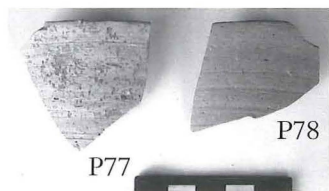


**P76**, P96/0146/1, Square  $\Delta$

**Small jug.** Rim and neck fragment. Round, outcurving rim; cylindrical neck. Medium, brown clay; wheel marks on the interior surface; self-slip. Dim.  $4.5 \times 6.0 \times 0.07$ .

**P77**, P96/146b/1, Square  $\Delta$

**Handleless conical cup.** Body and rim fragment. Conical body with slightly curved profile; thin rim following the profile of the body. Fine yellowish (Petras) clay with few inclusions; self-slip. Dim.  $5.2 \times 5.3 \times 0.4$ .



**P78**, P96/146b/2, Square  $\Delta$

**Handleless conical cup.** Body and rim fragment. Conical body with slightly curved profile; thin rim following the profile of the body. Fine orange-buff clay with few inclusions; wheel marks on both surfaces; self-slip. Dim.  $5.0 \times 5.0 \times 0.4$ .

**P79**, P96/146b/3, Square  $\Delta$

**One-handed conical cup.** Handle fragment. Vertical, of elliptical section. Fine beige buff clay with few inclusions; brown paint. Monochrome. Dim.  $6 \times 4 \times 1.2$ .



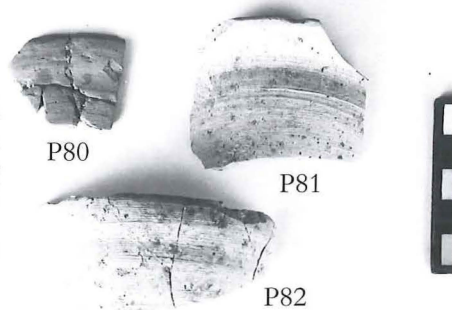
Bag 96/0146a-b: 2 bags, containing 26 sherds; 19 diagnostic; weight: 0.25 kg. Shapes: 2 pithoid jars; 3 jugs, including **P76** (see above); 2 bowls; 5 conical cups; 1 straight-sided cup handle **P79** (see above); 1 miniature cup handle; (1 EMII pedestalled bowl, intrusive). Clay: Petras: 1 (fine); buff: 2 (fine), 2 (medium); beige buff: 1 (fine), 1 (medium); orange buff: 6 (fine), 2 (medium); orange: 6 (medium), 1 (coarse); reddish: 1 (coarse); reddish with limestone inclusions: 1 (coarse); brown: 2 (medium). Decoration: 7 (monochrome 6, dark-on-light 1). Remnants: 2 handles; some conical cup rims; the rest all small, non-diagnostic. MMII. (P96/146b/4 = rim fragment of pedestalled EM II bowl, intrusive).

**P80**, P96/0170/1, Square M

**Handleless conical cup.** Rim and body fragment; mended from four sherds. Conical body with curved profile; thin rim following the profile of the body. Orange-buff, fine clay with several inclusions; wheel marks on both surfaces; self-slip. Dim.  $3.2 \times 2.4 \times 0.4$ .

**P81**, P96/0170/2, Square M

**Conical ledge-rimmed bowl.** Rim and body fragment. Shallow body with curved profile; horizontal outcurving rim. Buff fine clay with several inclusions; wheel marks on both surfaces; self-slip. Dim.  $5.3 \times 4.2 \times 0.4$ .



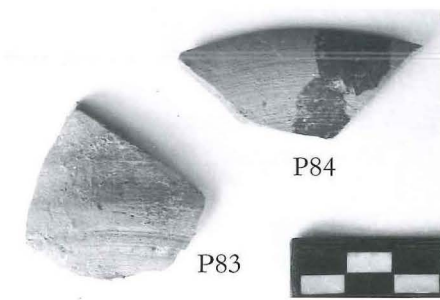
**P82**, P96/0170/3, Square M

**Conical ledge-rimmed bowl.** Rim and body fragment. Shallow body with curved profile; horizontal outcurving rim. Buff, fine clay with several inclusions; wheel marks on both surfaces; self-slip. Dim.  $7 \times 3.6 \times 0.5$ .

Bag 96/0170a-b: 2 bags, containing 19 sherds; 15 diagnostic; weight: 380 g  
Shapes: 1 pithoid jar; 3 jugs; 3 ledge-rim bowls, including **P81** and **P82** (see above); 7 conical cups, including P80 (see above); 1 cup. Clay: Petras: 1 (fine); buff: 5 (fine); beige buff: 1 (coarse); orange buff: 4 (fine), 2 (medium); orange: 1 (fine), 4 (medium); grey: 1 (medium). Decoration: 2 (monochrome 1, dark-on-light 1). Remnants: rather non-diagnostic; all the cup fragments are very small; the jug sherds non-descriptive, except for one fragment. MMII.

**P83**, P96/0171/2, Square  $\Sigma$

**Juglet.** Body fragment. Fine buff clay; self-slip. Dim.  $4.0 \times 4.2 \times 0.4$ .



**P84**, P96/0171/3, Square  $\Sigma$

**Conical bowl.** Rim and body fragment. Shallow body with slightly curved profile; thin rim following the profile of the body. Buff fine clay with few inclusions; wheel marks on the interior surface; self-slip; black-brown paint, unevenly fired; Splash decoration on both surfaces. Dim.  $5.4 \times 3.6 \times 0.4$ .

Bag P96/0171 contained 15 sherds, 9 diagnostic. Weight: 0.05 kg.

Shapes: 2 jugs, including **P83** (see above); 1 conical bowl, **P84** (see above); 4 conical cups; 1 semi-globular cup; 1 bell cup. Clay: Buff: 7 (fine); orange: 2 (medium); brown: 1 (medium), 2 (coarse); grey: 2 (fine), 1 (medium). Decoration: 4 (dark-on-light 3, black burnished 1). MMII B. (EMII intrusion, 5 sherds, including P96/171/1= EMI burnished cup rim fragment, Fig. 26i).



**P85**, P96/0177/2a-b, Square  $\Sigma$

**Straight-sided cup.** Two, non-joining rim, body and handle fragments. Conical body; thin rim following the profile of the body; vertical ribbon handle. Fine yellowish (Petras) clay with few inclusions; wheel marks on the interior surface; self-slip. Dim. a)  $7.0 \times 5.2 \times 0.4$ . b)  $4.0 \times 0.8 \times 0.4$ .

Bag P96/0177 contained 12 sherds; 8 diagnostic; weight: 0.25 kg.

Shapes: 2 pithoid jars; 2 jugs; 1 hole-mouthed jar; 1 conical bowl; 1 one-handled conical cup, **P85** (see above); 1 cooking pot. Clay: Petras: 1 (fine); buff: 1 (fine), 1 (medium); orange: 3 (medium), 5 (coarse); grey: 1 (fine). Decoration: 7 all monochrome. P96/177/1, cooking pot leg. MMII.





**P86**, P96/0193/1a-c, Square K

**One-handed carinated cup.** Three non-joining fragments. Flat base; carinated body profile; thin, slightly outcurving rim. Buff fine clay; self-slip; traces of black paint. a) Body fragment. Dim. 4.8 × 3.7 × 0.3. b) Upper body and rim fragment. Dim. 2.4 × 3.0 × 0.3. c) Base and lower body fragment. Dim. 5.0 × 2.2 × 0.4.

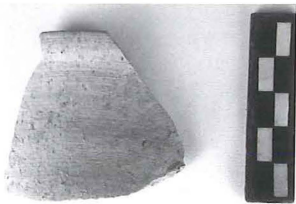


**P87**, P96/0193/2, Square K

**Conical bowl.** Rim and body fragment. Shallow conical body with slightly curved profile; rim following the profile of the body. Buff fine clay with few inclusions; wheel marks on the interior surface; self-slip; brown-black paint. Splash decoration on both surfaces. Dim. 7.0 × 5.3 × 0.4.

Bag P96/0193 contained 25 sherds, 21 diagnostic; weight: 0.2 kg.

Shapes: 4 pithoid jars; 4 jugs; 1 conical bowl **P87** (see above); 4 conical cups; 3 cups; 1 carinated cup **P86** (see above). Clay: buff: 9 (fine), 1 (medium); beige buff: 2 (fine), 3 (medium); orange: 1 (fine), 9 (coarse). Decoration: 13 (monochrome 10, dark-on-light 2, light-on-dark 1). Remnants: a few cup rim fragments, a large closed vessel in 3 fragments. MMII, (EMIIA, MMI intrusions, including P96/193/3: EMII dark-on-light fragment Fig. 26h)).



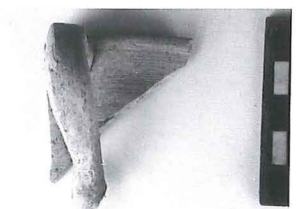
**P88**, P96/0254/1, Square E

**One-handed carinated cup.** Body and rim fragment. Carinated body; thin, slightly outcurving rim; the attachment of a vertical handle of elliptical section is preserved. Buff fine clay; wheel marks on both surfaces; self-slip. Dim. 4.8 × 4.0 × 0.4.



**P89**, P96/0254/2, Square E

**Conical bowl.** Rim and body fragment. Shallow body with curved profile; oblique outcurving rim. Buff fine clay with few inclusions; wheel marks on the interior surface; self-slip. Dim. 5.0 × 5.4 × 0.4.



**P90**, P96/254/3, Square E

**One-handed straight-sided cup.** Rim, body and handle fragment. Conical-cylindrical body; rounded, outcurving rim; vertical, ribbon handle, asymmetricaly placed. Fine, yellowish (Petras) clay; wheel marks on both surfaces; self-slip. Dim. 4.0 × 5.0 × 0.4.



**P91**, P96/0254/5, Square E

**Ledge-rimmed conical bowl.** Rim and body fragment. Conical body with curved profile; horizontal outcurving rim. Fine orange clay with few inclusions; self-slip. Dim. 4.8 × 3.6 × 0.4.

Bag 96/0254a and b. Two bags, containing 104 sherds; 81 diagnostic; weight: 0.9 kg.

Shapes: 2 pithoid jars; 6 jugs; 2 tripod cooking pots; 11 conical bowls, one being **P87** (see above); 1 ledge-rimmed conical bowl **P89** (see above); 1 one-handed straight-sided cup **P90** (see above); 1 small carinated bowl; 24 conical cups; 10 cups; 5 carinated cups, including **P91** (see above); 1 straight-sided cup; 4 bell

cups; 1 flat semi-circular lug. Clay: Petras: 3 (fine), 1 (medium); buff: 51 (fine), 2 (medium); pinkish-buff: 1 (medium); beige-buff: 12 (fine), 6 medium; orange buff: 7 (fine), 1 (medium); orange: 3 (fine), 8 (medium); reddish: 1 (coarse); brown: 2 (medium); brown with limestone inclusions: 2 (medium); grey: 4 (coarse). Decoration: 22 (monochrome 14, dark-on-light 5, light-on-dark 3). Remnants: many diagnostic; several cup and bowl fragments; some large non-diagnostic coarse sherds; many painted on fine ware; an unpainted handleless conical cup rim fragment shows sign of burning (not as lamp); two handle fragments with bands. MMIIB; (EMII lug, intrusive), (LMIA intrusive, P96/254/4 = base and body of thick medium-ware jug with ripple pattern)

**P92**, P96/0280/1, Square Δ

**Conical bowl.** Rim and body fragment. Shallow body with curved profile; rounded, outcurving rim. Orange-buff fine clay; self-slip. Dim. 5.0 × 5.4 × 0.5.

Bag P96/0280 contained 16 sherds; 16 diagnostic; weight: 0.4 kg.

Shapes: 1 pithoid jar; 2 jugs; 2 tripod cooking pots; 1 ledge-rimmed bowl; 1 conical bowl **P92** (see above); 7 conical cups; 1 cup; 1 carinated cup. Clay: Petras: 1 (fine), 1 coarse; buff: 9 (fine); orange-buff: 2 (fine); brown: 2 (medium); grey: 1 medium. Decoration: 4 (monochrome 3; dark-on-light 1). Remnants: small fragments of fine-ware conical cups; medium to coarse sherds non-diagnostic. MMIIB (1 MMIII intrusion).

**P93**, P96/0329/1, Square K

**Cooking dish.** Rim and body fragment. Rounded, outcurving rim; shallow conical-cylindrical body. Coarse reddish clay; brown slip; traces of fire. Dim. 4.8 × 5.3 × 0.6.

Bag P96/0329 contained 23 sherds; 13 diagnostic; weight: 0.1 kg.

Shapes: 1 dish; 1 bowl; 4 conical cups; 1 semi-globular cup; 1 carinated cup; 4 cups. Clay: Buff: 3 (fine); orange-buff: 5 (fine), 5 (medium); orange: 3 (fine), 4 (medium); reddish: 1 (coarse); grey: 1 (medium); fine grey ware: 1 (medium). Decoration: 11 (monochrome 6, dark-on-light 3, light-on-dark 2). Remnants: a few fine cup fragments. MMII (very few EMII, intrusive).



**P94**, P96/0369/1, Square N

**Handleless conical cup.** Rim and body fragment. Conical body with slightly curved profile; rim of triangular section following the profile of the body. Fine yellowish (Petras) clay; wheel marks on both surfaces; self-slip. Dim. 3.2 × 3.7 × 0.4.

Bag P96/0369 contained 7 sherds; 4 diagnostic; weight: 0.05 kg.

Shapes: 2 conical cups including **P94** (see above); 1 spouted bowl or basin; (1 EMII cup, intrusive). Clay: Petras: 1 (fine); beige buff: 1 (medium); orange: 1 (medium); grey: 2 (medium). Decoration: 1 monochrome. MMII. (one EMII intrusive).





**P95**, P96/0390/1, Square Z

**Handleless conical cup.** Body and rim fragment, mended from two sherds. Conical body with slightly curved profile; thin rim following the profile of the body. Fine orange-buff clay with few inclusions; wheel marks on both surfaces; buff slip. Dim.  $5.0 \times 5.8 \times 0.4$ .

Bag P96/0390 contained 18 sherds; 10 diagnostic; weight 0.1 kg.

Shapes: 4 jugs; 2 bowls; 2 conical cups; 1 carinated cup; (1 EM lug). Clay: Buff: 1 (medium); orange-buff: 1 (fine); orange: 2 (fine); 4 (medium); brown: 1 coarse; grey: 2 (fine), 3 (medium), 1 coarse; fine grey ware: 1. Decoration: 3, all monochrome. Remnants: 2 more diagnostic sherds: fine-ware thick rim of cup; carinated cup. MMIIB. (P96/390/2: EM II lug, intrusive).



**P96**, P96/0392b/2, Square  $\Gamma$

**One-handed conical cup.** Body and handle fragment. Conical body; vertical handle of elliptical section. Buff, fine clay with few inclusions; self-slip. Dim.  $7.2 \times 5.0 \times 0.5$ .

**P97**, P96/0392b/3, Square  $\Gamma$

**Spouted jug.** Spout fragment. Buff fine clay with few inclusions; self-slip; reddish-brown paint, unevenly fired. Oblique bands. Dim.  $6.0 \times 2.8 \times 0.8$ .

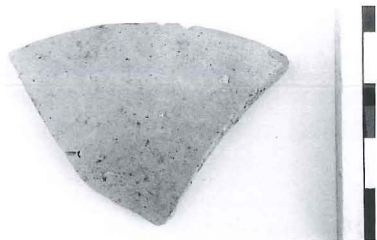


**P98**, P96/0392b/4, Square  $\Gamma$

**Conical bowl.** Rim and body fragment. Conical body; rim of triangular section following the profile of the body. Buff fine clay with few inclusions; wheel marks on the interior surface; self-slip; brown paint. Splash decoration on both surfaces. Dim.  $5.6 \times 5.3 \times 0.4$ .

Bag 96/0392a and b: Two small bags containing 42 sherds, 22 diagnostic; weight: 0.6 kg.

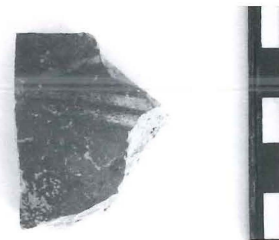
Shapes: 1 pithoid jar; 2 tripod cooking pots; 3 jugs; 2 bowls; 1 fruitstand; 1 one-handed conical cup; 4 conical cups; 1 carinated cup; 3 cups; 2 conical bowls; 1 spout; (3 EM cups, intrusive). Clay: buff: 5 (fine) 2 (medium); beige-buff: 2 medium, 1 (coarse); orange-buff: 7 (fine), 3 (medium); orange: 1 (fine), 8 (medium); grey: 1 (fine), 1 (medium); (2 EMII fine grey ware). Decoration: 11 (monochrome 4; light-on-dark 2; dark-on-light 5). P96/392/1: sherd of jug with dark brown (Fig. 26d); **P96**: light-on-dark body sherd; **P97**: cup rim sherd of substantial size, probably straight-sided; P96/392b/1: large fruitstand rim fragment, (Fig. 26f). Remnants: base and lower body fragment of pithoid jar; (EMII cup rim fragment, intrusive); the rest very small. MMIIB (EMII intrusive).



a. 96/0308/1



b. 96/0279/1



c. 96/0392/2



d. 96/0392/1



e. 96/0392/3



f. 96/0392b/1



g. 96/0280/2



h. 96/0193/3



i. 96/0171/1

Fig. 26. Sherds from the archive deposit not included in the catalogue of pottery, but included in the description of the context (21–47).